

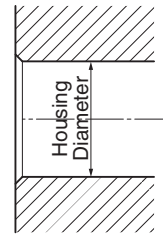
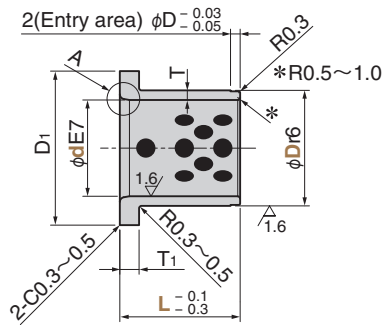
# Oilless Bush

Copper Alloy  
Thin Flange Type

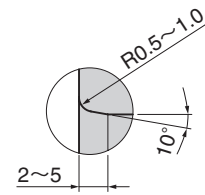
SO#50SP2



**SOBFU**



Detail A



● Sliding Direction



● Mating post tolerance

d8 : General use (high load)  
e7 : General use (light load)  
f7 : High precision

● Other operating conditions and characteristics

Can be used in the atmosphere and fresh water (on condition).  
Good performance in operation under high load and at low speed.

▲ Operation temperature is 150°C or less

Material Base Copper alloy (SO-2)  
Solid lubricant (GR-1)

※ Values shown in the "Tolerance d after press-fit" column are provided for reference.

d E7	D r6	D <sub>1</sub>	T	T <sub>1</sub>	Tolerance d after press-fit	Catalog No.	d	D	L
5	7	11					5	7	10 12
					+0.017 +0.005				10 12
6	8	12					6	8	12 15
									10 12
8	10	14	1	2	+0.023 +0.008		8	10	12 15 20
									10 12
10	12	16			+0.020 +0.004		10	12	12 15 20
									10 12
12	15	21					12	15	15 20 25 30
									12 15
13	16	22	1.5		+0.030 +0.011	SOBFU	13	16	15 20
									10 12
									15 20 25
15	18	24					15	18	15 20 25
									12 15
16	20	26			+0.025 +0.006		16	20	20 25 30
									15 20
20	24	32	2				20	24	25 30
					+0.036 +0.014				30 40
25	29	37		4			25	29	30 40 50
									30
30	34	42			+0.031 +0.009		30	34	40 50



Order

Catalog No.

SOBFU

d

20

D

24

L

30

▲ Special order products are available in limited quantities.  
Contact your sales representative.