

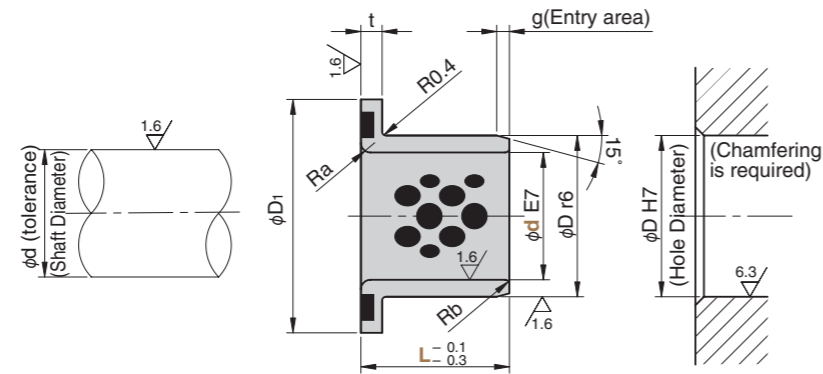
Oilless Thrust Bush

Copper Alloy I.D.
E7· O.D. r6 Type

SO#50SP2



SOSB



● Sliding Direction



● Mating post tolerance

d8 : General use (high load)
e7 : General use (light load)
f7 : High precision

● Other operating conditions and characteristics

Can be used in the atmosphere and fresh water (on condition).
Good performance in operation under high load and at low speed.

⚠ When the product is used at high temperature (150°C or more), the embedding specification of solid lubricant is different. Please contact us for details.

Material Base Copper alloy (SO-2)
Solid lubricant (GR-1)

Operation Range

Lubricant Type	Lubricating Condition	Environment Condition	Max. Allowable Load P N/mm ²	Max. Allowable Sliding Speed V m/min	Max. Allowable PV value N/mm ² · m/min	Operation Range Temperature °C
GR-1	No lubrication	Atmosphere	100	15	150	-50 ~ +300
	Regular lubrication (Grease)			30	200	-50 ~ +150

Physical Properties (Mechanical Features)

Specific Gravity	Hardness HB	Elongation %	Tensile Strength N/mm ²	Linear Expansion Coefficient ×10 ⁻⁵ /°C
7.9	210 or more	12 or more	755 or more	1.9

※ Values shown in the "Tolerance d after press-fit" column are provided for reference.

d E7	D r6	D ₁	t	Ra	Rb	g	Tolerance d after press-fit	Catalog No.	d	L
12	18	+0.034 +0.023	30				+0.035 +0.016		12	11
15	21								15	13
16	22		35	3	1	1	+0.028 +0.009		16	13
18	24	+0.041 +0.028	40						18	18
20	28		45				+0.039 +0.017		20	20
25	33		50	5			+0.034 +0.012		25	25
30	38		55	2		2			30	25
35	44	+0.050 +0.034	65				+0.048 +0.022	SOSB	35	25
					2				35	35
40	50		70	7	3		+0.045 +0.019		40	27
									40	37
										47
50	62	+0.060 +0.041	90	2			+0.038 +0.012		50	38
				8					50	48
60	74	+0.062 +0.043	110				+0.052 +0.021		60	38
									60	68
70	85		120	3	3	3			70	50
		+0.073 +0.051		10			+0.045 +0.014		70	80
80	96		140						80	60
									80	90



Order

Catalog No. **SOSB** d **16** — L **13**