

# Oilless Slide Plate

Copper Alloy Type  
Thickness 20mm

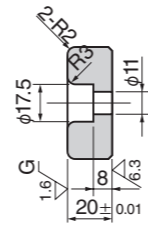
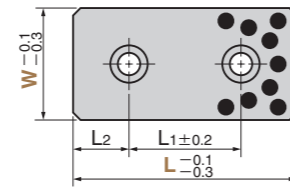
SO#50SP2



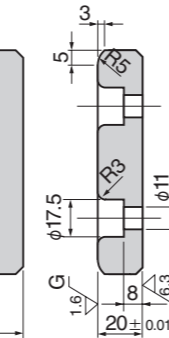
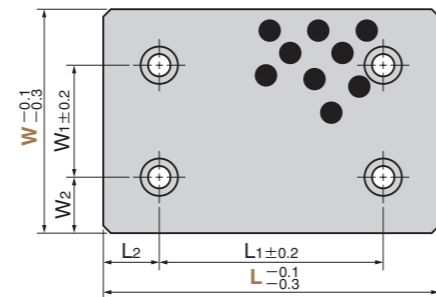
## SESW



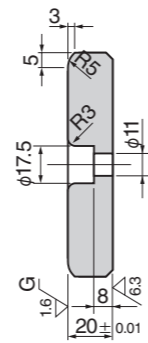
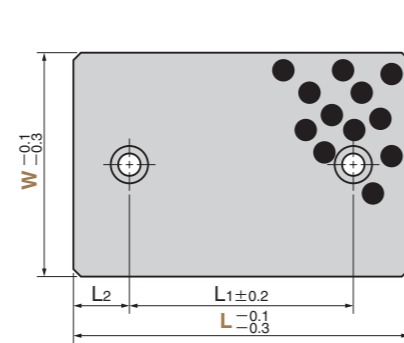
● W = 28 ~ 75



● W = 100 or more



## SESWT (2-Hole Type)

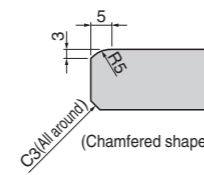
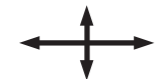


● Sliding Direction

W = 28 · 38



W = 48 or more



(Chamfered shape at both ends)

⚠ When the product is used at high temperature (150°C or more), the embedding specification of solid lubricant is different. Please contact us for details.

Material Base Copper alloy (SO-2)  
Solid lubricant (GR-1)

W <sub>1</sub>	W <sub>2</sub>	L <sub>1</sub>	L <sub>2</sub>	Catalog No.	W	L
		45	15			75
		50	25		28	100
		100				150
		45	15			75
		50	25		38	100
		100				150
		45	15			75
		50				100
		75			48	125
		100	25	SESW		150
		150				200
		45	15			75
		50			58	100
		100				150
		25				75
		50				100
		75			75	125
		100	25			150
		150				200
		50				100
		75				125
	25	100			100	150
		150				200
		200				250
50		75	50			300
		100		SESW		125
		150	25	SESWT		150
	37.5				125	200
		200				250
		200	50			300
			75			350
		100				150
100	25	150	25		150	200
		200				250

W<sub>1</sub> and W<sub>2</sub> are the dimensions only for SESW (W=100 or more).



Order

Catalog No. W — L

SESW 28 — 100

SESWT 100 — 150

■ We are ready to accept requests or orders for special parts.

## Operation Range

Lubricant Type	Lubricating Condition	Environment Condition	Max. Allowable Load P N/mm <sup>2</sup>	Max. Allowable Sliding Speed V m/min	Max. Allowable PV value N/mm <sup>2</sup> · m/min	Operation Range Temperature °C
GR-1	No lubrication	Atmosphere	100	15	150	-50 ~ +300
	Regular lubrication (Grease)			30	200	-50 ~ +150

## Physical Properties

Specific Gravity	Hardness HB	Elongation %	Tensile Strength N/mm <sup>2</sup>	Linear Expansion Coefficient ×10 <sup>-5</sup> /°C
7.9	210 or more	12 or more	755 or more	1.9