

Oilless Slide Plate

Copper Alloy Type
Thickness 5mm

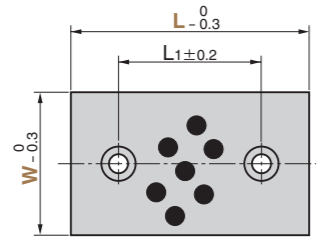
SO#50SP2



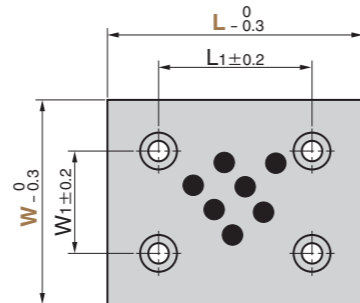
UWP



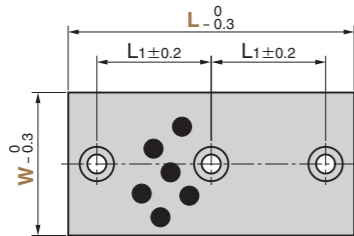
● W= 18 ~38, L= 50 ~100
W= 48, L= 75 ~125



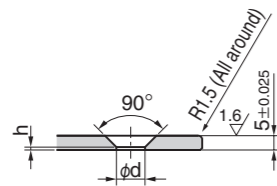
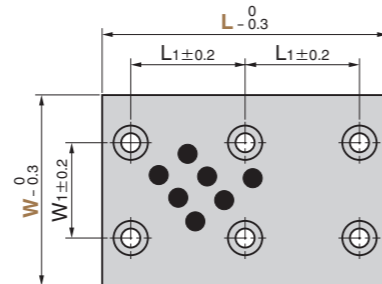
● W= 75, L= 75 ~125
W= 100, L= 100 ~125



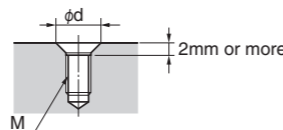
● W=18~48, L=150



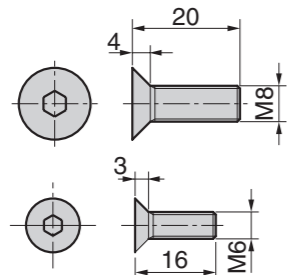
● W=75 · 100, L=150



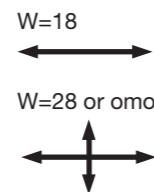
⚠ When tapped holes for mounting are drilled on the mating part, chamfer corners as shown below.



● Flat Head Bolt



● Sliding Direction



Material Base Copper alloy (SO-2)
Solid lubricant (GR-1)
Accessory Flat Head Bolt

Operation Range

Lubricant Type	Lubricating Condition	Environment Condition	Max. Allowable Load P N/mm ²	Max. Allowable Sliding Speed V m/min	Max. Allowable PV value N/mm ² · m/min	Operation Range Temperature °C
GR-1	No lubrication	Atmosphere	100	15	150	-50 ~ +300
	Regular lubrication (Grease)			30	200	-50 ~ +150

Physical Properties

Specific Gravity	Hardness HB	Elongation %	Tensile Strength N/mm ²	Linear Expansion Coefficient ×10 ⁻⁵ /°C
7.9	210 or more	12 or more	755 or more	1.9

W ₁	L ₁	d	h	Mounting Bolt	Catalog No.	W	L
	20						50
	45						75
	70	6.5	1.5	M6		18	100
	60						150
	20						50
	45						75
	70					28	100
	60						150
	20						50
	45						75
	70					38	100
	60				UWP		150
	45						75
	70	10	0.8	M8		48	100
	95						125
	60						150
	45						75
45	70					75	100
	95						125
	60						150
	70						100
70	95					100	125
	60						150

Order **Catalog No.** **W** — **L**
UWP 38 — 50

⚠ When the product is used at high temperature (150°C or more), the embedding specification of solid lubricant is different. Please contact us for details.

■ We are ready to accept requests or orders for special parts.