

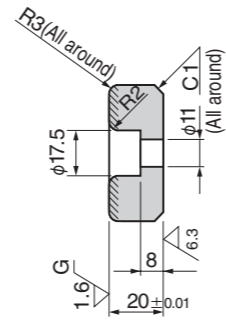
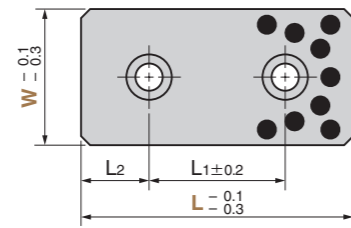
Oilless Slide Plate

Steel Type
Thickness 20mm
SO#50S45C

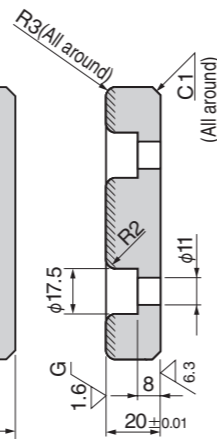
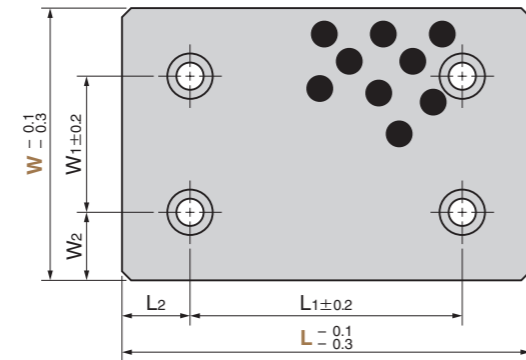


FRP

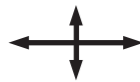
● W = 48 · 75



● W = 100 or more



● Sliding Direction



▲ When the product is used at high temperature 150°C or more, the embedding specification of solid lubricant is different. Please contact us for details.

Material Base S45C
Solid lubricant (GR-1)
Hardness HRC40 or more
Area to be Induction Hardened (Hatched Area)

Operation Range

Lubricant Type	Lubricating Condition	Environment Condition	Max. Allowable Load P N/mm ²	Max. Allowable Sliding Speed V m/min	Max. Allowable PV value N/mm ² · m/min	Operation Range Temperature °C
GR-1	No lubrication	Atmosphere	30	10	60	-50 ~ +200
	Regular lubrication (Grease)			15	80	-50 ~ +150

Physical Properties

Specific Gravity	Hardness HRC	Elongation %	Tensile Strength N/mm ²	Linear Expansion Coefficient ×10 ⁻⁵ /°C
7.8	40 or more	17 or more	690 or more	1.1

W ₁	W ₂	L ₁	L ₂	Catalog No.	W	L
		45	15			75
		50				100
		75			48	125
		100				150
		150				200
		25				75
		50				100
		75			75	125
		100				150
		150				200
		50				100
		75	25	FRP		125
	25	100			100	150
		150				200
50		200				250
		75				125
	37.5	100			125	150
		150				200
		200				250
		100				150
100	25	150			150	200
		200				250



Order

Catalog No. **FRP** W **100** — L **125**

■ We are ready to accept requests or orders for special parts.