

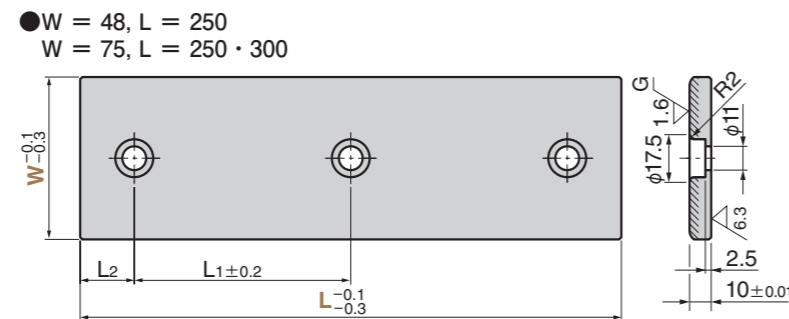
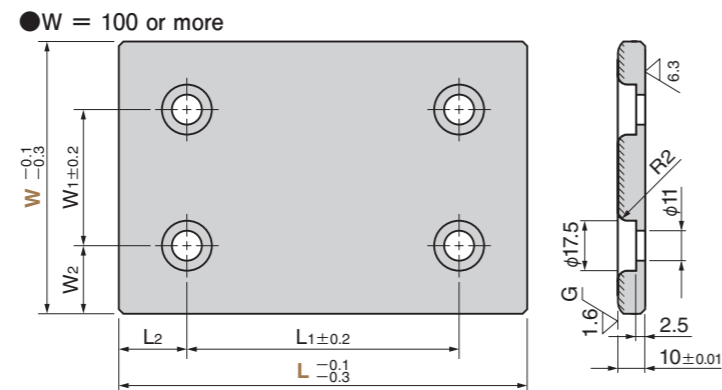
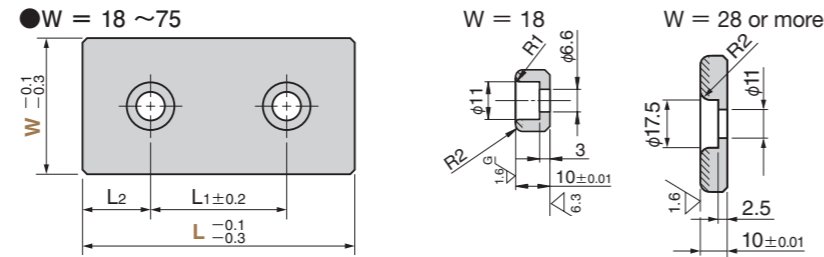
Oilless Slide Plate

Copper Powder Sintered Type
Thickness 10mm

SO#220



TWX



TWXT (2-Hole Type)

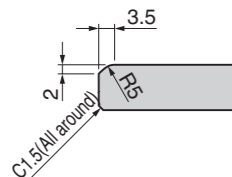
● Sliding Direction



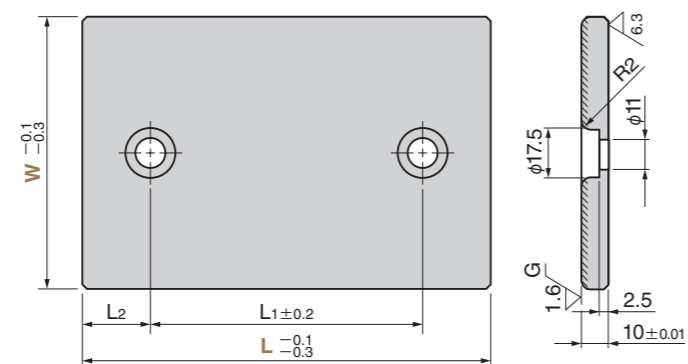
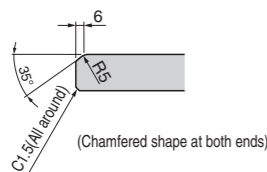
● W = 18 · 28



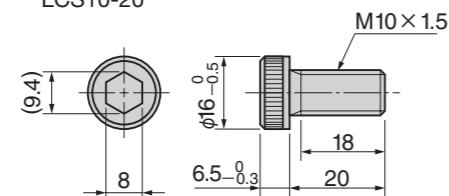
● W = 38 · 48 · 58



● W = 75 or more



● Special brazier head bolt (LCS standard)
LCS10-20



* Not attached in the case of W = 18

Material Copper powder sintered(SO#220)
Hatched area sintered
Thickness 1.2mm or more
S45C (Base Plate)

Accessory Mounting Bolt

W1	W2	L1	L2	Catalog No.	W	L	
						TWX	TWXT
		45	15			75	
		50			18*	100	
		75	25			125	
		100				150	
		45	15			75	
		50			28	100	
		75	25			125	
		100				150	
		45	15			75	
		50			38	100	
		75	25			125	
		100				150	
		45	15			75	
		50			TWX	100	
		75	25			125	
		100				150	
		45	15			75	
		50			48	100	
		75	25			125	
		100				150	
		45	15			75	
		50			58	100	
		75	25			125	
		100				150	
		25				75	
		45	15			100	
		50				125	
		75	25			150	
		100			75	200	
		150				250	
		100	50			300	
		50				100	100
		75				125	125
50	25	100	25		100	150	150
		150				200	200
		200				250	250
			50			300	
75		75			TWX	125	125
		100			TWXT	150	150
		150	25			200	200
50	37.5	200				250	250
			50			300	
		100				150	150
100	25	150	25		150	200	200
		200				250	250

* Bolts do not accompany with TWX18.

* W1 and W2 are the dimensions only for TWX (W=100 or more).

Order

Operation Range

Lubricating Condition	Environment Condition	Max. Allowable Load P N/mm ²	Max. Allowable Sliding Speed V m/min	Max. Allowable PV value N/mm ² · m/min	Operation Range Temperature °C
No lubrication	Atmosphere	50	30	100	-40 ~ +120
Regular lubrication (Grease)		75	60	150	

Physical Properties

Specific Gravity	Hardness HRM	Compression strength N/mm ² (0.2% proof stress)	Impregnation ratio %
6.2±0.3	70 ~ 90	200 ~ 250	18 or more

■ We are ready to accept requests or orders for special parts.