

Oilless Slide Guide

Copper Alloy
L-Shaped Type

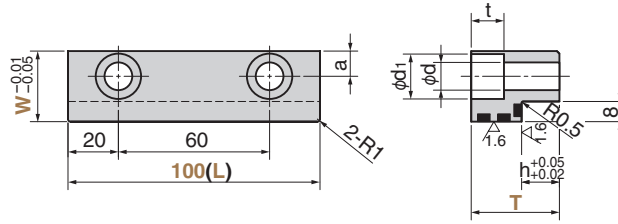
SO#50SP2



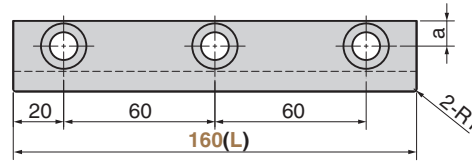
SGLDW



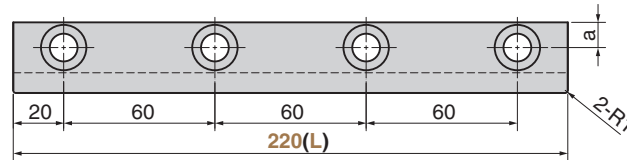
● L=100



● L=160



● L=220



⚠ When the product is used at high temperature (150°C or more), the embedding specification of solid lubricant is different. Please contact us for details.

Material Base Copper alloy (SO-2)
Solid lubricant (GR-1)

Operation Range

Lubricant Type	Lubricating Condition	Environment Condition	Max. Allowable Load P N/mm ²	Max. Allowable Sliding Speed V m/min	Max. Allowable PV value N/mm ² · m/min	Operation Range Temperature °C
GR-1	No lubrication	Atmosphere	100	15	150	-50 ~ +300
	Regular lubrication (Grease)			30	200	-50 ~ +150

Physical Properties

Specific Gravity	Hardness HB	Elongation %	Tensile Strength N/mm ²	Linear Expansion Coefficient ×10 ⁻⁵ /°C
7.9	210 or more	12 or more	755 or more	1.9

a	d	d ₁	h	t	Catalog No.	W	L	T
7.5	7	11	15	7	SGLDW	23	100	30
			26				160	41
			10				100	25
			100				160	25
			220				100	
			220				160	
10	11	18	15	13	SGLDW	28	100	35
			26				160	56
			100				100	
			220				160	
			220				100	
			220				160	



Order

Catalog No. **SGLDW** W **23** — L **220** — T **30**

■ We are ready to accept requests or orders for special parts.