

Oilless Slide Guide

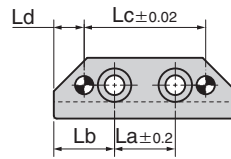
Copper Alloy
L-Shaped Type

SO#50SP2



SGLXS

●L=60



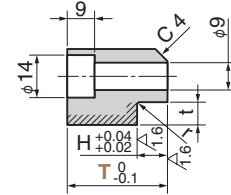
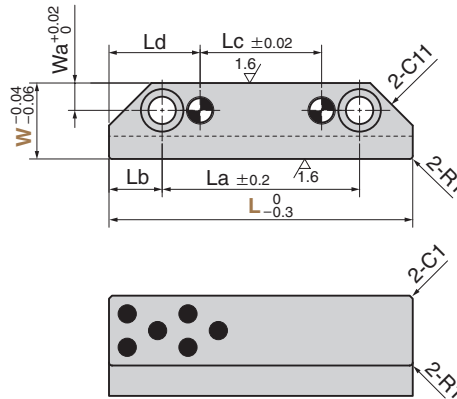
●Dowel Pin Hole

W=20 $\phi 6 \begin{smallmatrix} +0.012 \\ 0 \end{smallmatrix}$

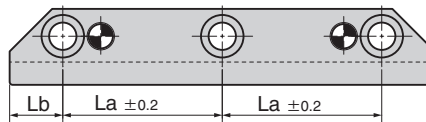
W=25 · 30 $\phi 8 \begin{smallmatrix} +0.015 \\ 0 \end{smallmatrix}$



●L=80~100



●L=120~200



⚠ When the product is used at high temperature (150°C or more), the embedding specification of solid lubricant is different. Please contact us for details.

Material Base Copper alloy (SO-2)
Hatched area solid lubricant(GR-1)

Wa	La	Lb	Lc	Ld	H	t	r	Catalog No.	W	L	T
	20	20	40	10						60	
	50		20							80	
	70		40							100	23
	45	15	60		8	5.5	0.5		20	120	28
	55		80							140	
	65		100							160	
9	45		20	30						80	
	65		40							100	
	42.5		60							120	28
	52.5	17.5	80		10	7.5		SGLXS	25	140	33
	62.5		100							160	43
	72.5		120							180	
	82.5		140				0.8			200	
	60		20							100	
	40		40							120	
11	50	20	60	40	15	11			30	140	43
	60		80							160	53
	70		100							180	
	80		120							200	



Order

Catalog No.

SGLXS

W

20

L

120

T

28