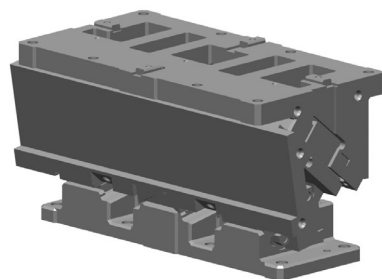


# ピアス・フランジ用ラージタイプ 吊りカムユニット UCMSL 概要

## OUTLINE OF UCMSL

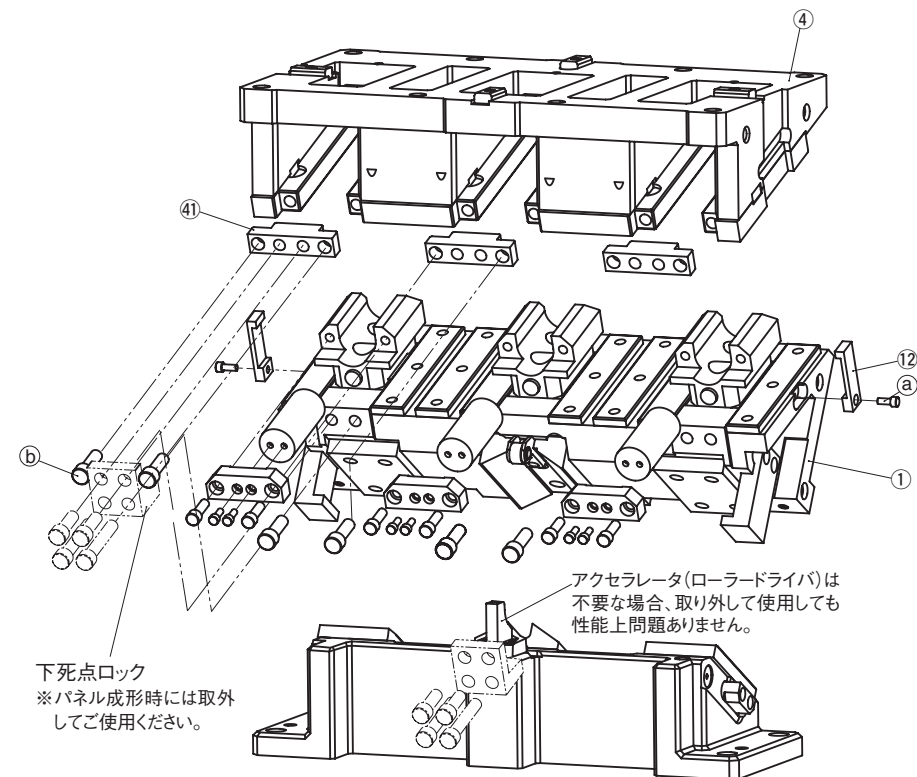


- マウント面幅 500 ～ 1000mm まで、100mm 飛びにラインナップ。
- 角度は 0° ～ 60°、5° 飛びでラインナップ。
- スプリングの後方抜きが可能なので、下死点調整が容易。
- ▲ マウント面幅 1600mm まで対応可能です。営業窓口までご相談ください。
- ▲ 65°、70°、75° 対応可能です。営業窓口までご相談ください。
- ▲ Gas Spring 取扱い
  - ・弊社推奨品以外の Gas Spring をご使用の場合はまず、営業窓口までご相談下さい。
  - ・ Gas Spring 単体でのメンテナンスを含む取扱いについては Gas Spring メーカーにお問い合わせ下さい。

### ■ UCMSL 仕様諸元

マウント面 幅	高さ	加工角	ストローク	加工力 kN (tonf)	スプリング力 N (kgf)
500 600	180	00	38.6	313.6(32.0)	18682.0(1906.3)
		05	42.6		
		10	46.7		
		15	50.9		
		20	55.3		
		25	60.0		
		30	65.1		
		35	70.8		
		40	77.1		
		45	84.5		
		50	93.3		
		55	104.6		
60	120.0				
700 800	180	00	38.6	470.4(48.0)	28023.0(2859.5)
		05	42.6		
		10	46.7		
		15	50.9		
		20	55.3		
		25	60.0		
		30	65.1		
		35	70.8		
		40	77.1		
		45	84.5		
		50	93.3		
		55	104.6		
60	120.0				
900 1000	180	00	38.6	627.2(64.0)	37364.0(3812.7)
		05	42.6		
		10	46.7		
		15	50.9		
		20	55.3		
		25	60.0		
		30	65.1		
		35	70.8		
		40	77.1		
		45	84.6		
		50	93.3		
		55	104.6		
60	120.0				

### ■ UCMSL の構造と分解・組立



#### ● UCMSL の分解方法

- 1) 六角穴付きボルト (Ⓐ) を緩めセーフティプレート (Ⓐ) を外します。
- 2) 六角穴付きボルト (Ⓑ) を緩めストッパプレート (Ⓐ) を外します。
- 3) カムスライダ (①) をカムホルダ (④) から後方へ引き抜きます。

#### ● UCMSL の組立方法

- 1) 組立は分解と逆の手順で行ってください。
  - ・摺動部に異物が付着していない事を確認して、グリスを塗布し組み立ててください。
  - ・カムスライダとカムホルダはクリアランス管理をしていますので、刻印されているシリアルナンバーを確認して組み立ててください。
  - ・分解・組立後、ボルトの締め忘れ等がないようご注意ください。

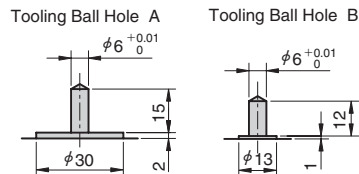
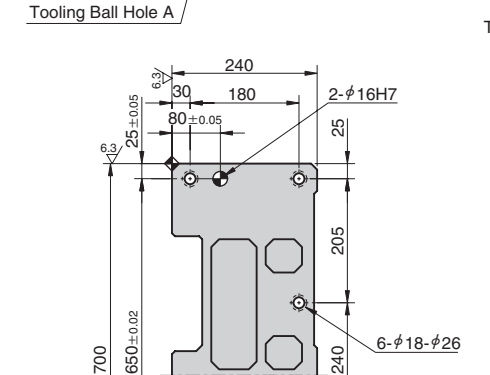
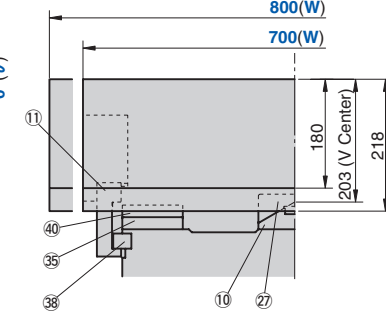
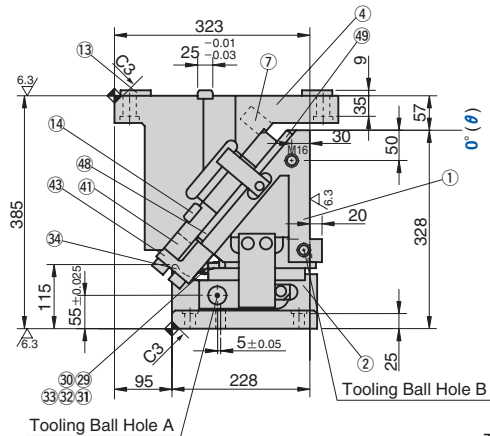
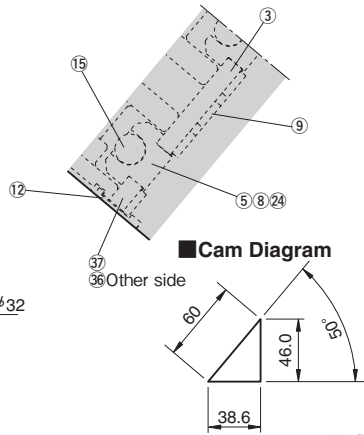
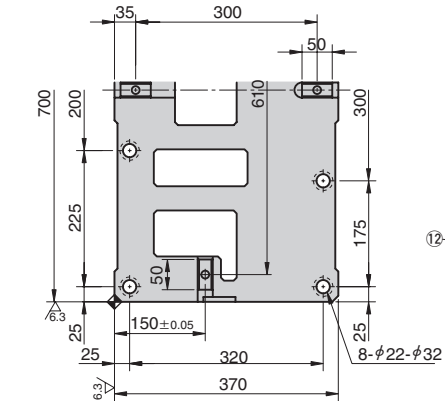
# Aerial Cam Unit

LARGE TYPE FOR PIERCE AND FLANGE

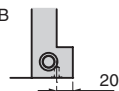
CAD FILE

UCMSL700 - 00 / UCMSL800 - 00

\*The cam diagram shows no roller bracket assemblies or accelerators. If these items are needed, please contact our sales department for details.



• Tooling Ball Hole B Hole Pitch=640



Travel S	Working Force kN(tonf)	Spring Force N(kgf)		Return Force N(kgf)	Catalog No.	W	θ	Spring Type PS
		Initial Load	Final Load					
38.6	470.4 (48.0)	-	28023 (2859.5)	38301 (3908.3)	UCMSL	700 800	00	GK *NGK
								GD *NGD
								GS *NGS

\* Parts for spring assembly are included.



Order

Catalog No.	W	θ	PS
UCMSL 700	700	00	GK
UCMSL 800	800	00	NGK

.....Without gas spring

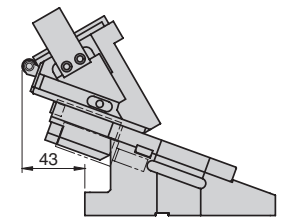
### Spring Specification (Qty 3)

No.	PS	Spring Model
15	GK	K750-80-TD (KALLER)
	GD	L.750.075.TO.140 (DADCO)
	GS	SM0750.75 (SDT)

### Weight (kg)

No.	PS	W	Slider Weight	Total Weight
15	GK	700	152	362.6
	GD	800	158.9	369.4
	GS			

### Space for removing



Option

Option Code	Specification
NF	Nitrogen gas not changed.



Order

UCMSL700 - 00 - GK - NF

### Table of Components

No.	Description	Qty	Material and Remark	No.	Description	Qty	Material and Remark
1	Cam Slider	1	FC250	29	Roller Bracket	1	S45C (1045)
2	Cam Driver	1	FC250	30	Roller	1	S45C (1045)
3	Base Plate A	2	S45C (1045)	31	Roller Pin	1	S45C (1045)
4	Cam Holder	1	FC250	32	Bushing	1	Bronze with Graphite (SOB12-18-16)
5	Spring Guide Block	3	Bronze with Graphite	33	Snap Ring E Type	2	φ9
7	Guide Pin Block	3	SS400 (1020)	34	Roller Driver	1	S45C (1045)
8	Spring Guide Plate	3	SS400 (1020)	35	Cam Slide Plate	2	Bronze with Graphite
9	Slide Lower Plate B	6	Bronze with Graphite	36	Base Plate B (R)	1	S45C (1045)
10	Cam Slide Guide	1	Bronze with Graphite	37	Base Plate B (L)	1	S45C (1045)
11	Positive Return Follower	2	S45C (1045)	38	Positive Return Block	2	Bronze with Graphite
12	Safety Plate	2	S45C (1045)	40	Lower Slide Plate B	2	S45C (1045)
13	Key A	4	SS400 (1020)	41	Stopper Plate	3	SS400 (1020)
14	Key B	6	SS400 (1020)	43	Locking Plate	2	SS400 (1020)
15	Gas Spring	3	Refer to the Spring Specification	48	Slide Plate	2	Bronze with Graphite
24	Stopper	6	Urethane PCU20	49	Slide Plate	2	Bronze with Graphite
27	Cam Slide Guide	1	S45C (1045)				



Bolts for assembly are not indicated.



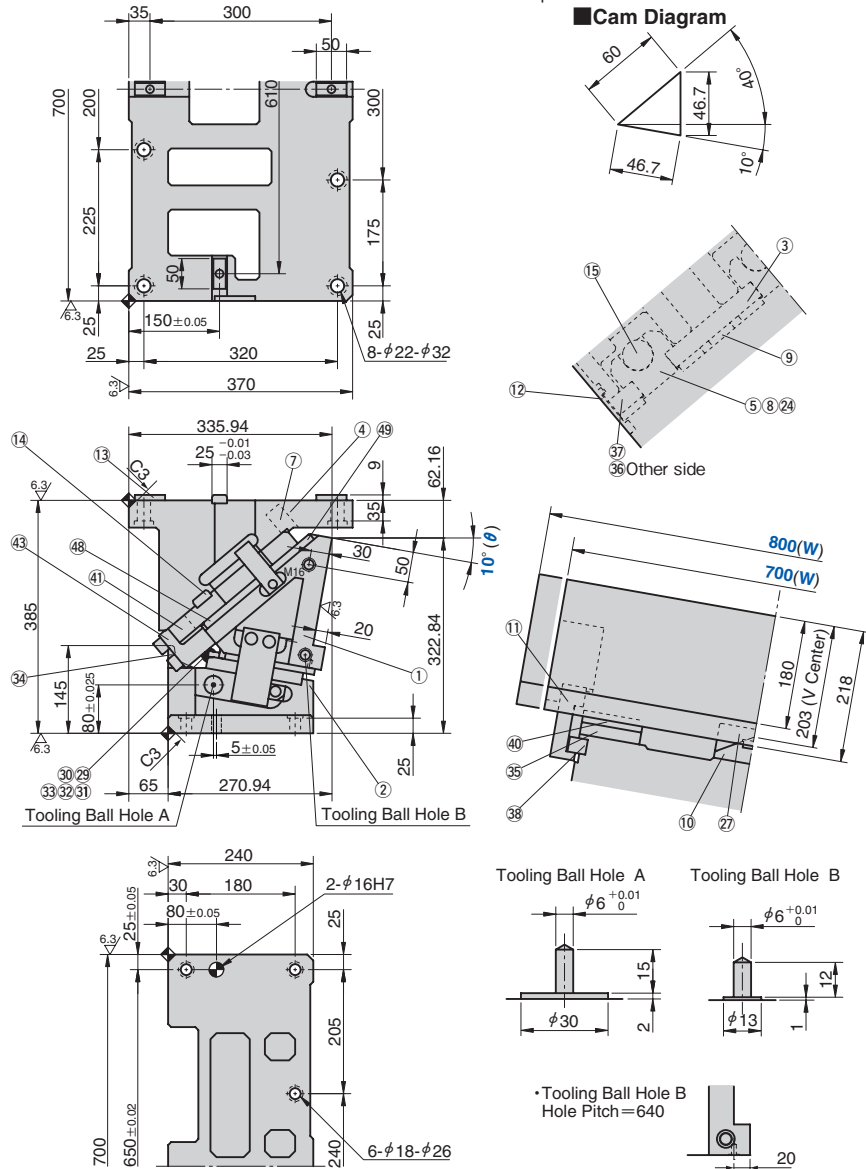
# Aerial Cam Unit

LARGE TYPE FOR PIERCE AND FLANGE



UCMSL700 - 10 / UCMSL800 - 10

\* The cam diagram shows no roller bracket assemblies or accelerators. If these items are needed, please contact our sales department for details.



Travel S	Working Force kN(tonf)	Spring Force N(kgf)		Return Force N(kgf)	Catalog No.	W	θ	Spring Type PS
		Initial Load	Final Load					
46.7	470.4 (48.0)	-	28023 (2859.5)	38022 (3879.8)	UCMSL	700 800	10	GK *NGK
								GD *NGD
								GS *NGS

\* Parts for spring assembly are included.



Order

Catalog No. W - θ - PS

UCMSL 700 - 10 - GK  
UCMSL 800 - 10 - NGK .....Without gas spring

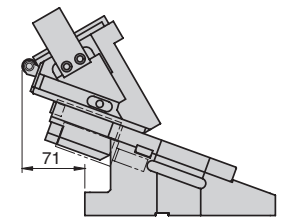
### Spring Specification (Qty 3)

No.	PS	Spring Model
15	GK	K750-80-TD (KALLER)
	GD	L.750.075.TO.140 (DADCO)
	GS	SM0750.75 (SDT)

### Weight (kg)

W	Slider Weight	Total Weight
700	152	357.2
800	158.9	364

### Space for removing



Option

Option Code	Specification
NF	Nitrogen gas not changed.



Order

UCMSL700 - 10 - GK - NF

### Table of Components

No.	Description	Qty	Material and Remark	No.	Description	Qty	Material and Remark
1	Cam Slider	1	FC250	29	Roller Bracket	1	S45C (1045)
2	Cam Driver	1	FC250	30	Roller	1	S45C (1045)
3	Base Plate A	2	S45C (1045)	31	Roller Pin	1	S45C (1045)
4	Cam Holder	1	FC250	32	Bushing	1	Bronze with Graphite (SOB12-18-16)
5	Spring Guide Block	3	Bronze with Graphite	33	Snap Ring E Type	2	φ9
7	Guide Pin Block	3	SS400 (1020)	34	Roller Driver	1	S45C (1045)
8	Spring Guide Plate	3	SS400 (1020)	35	Cam Slide Plate	2	Bronze with Graphite
9	Slide Lower Plate B	6	Bronze with Graphite	36	Base Plate B (R)	1	S45C (1045)
10	Cam Slide Guide	1	Bronze with Graphite	37	Base Plate B (L)	1	S45C (1045)
11	Positive Return Follower	2	S45C (1045)	38	Positive Return Block	2	Bronze with Graphite
12	Safety Plate	2	S45C (1045)	40	Lower Slide Plate B	2	S45C (1045)
13	Key A	4	SS400 (1020)	41	Stopper Plate	3	SS400 (1020)
14	Key B	6	SS400 (1020)	43	Locking Plate	2	SS400 (1020)
15	Gas Spring	3	Refer to the Spring Specification	48	Slide Plate	2	Bronze with Graphite
24	Stopper	6	Urethane PCU20	49	Slide Plate	2	Bronze with Graphite
27	Cam Slide Guide	1	S45C (1045)				



Bolts for assembly are not indicated.

# Aerial Cam Unit

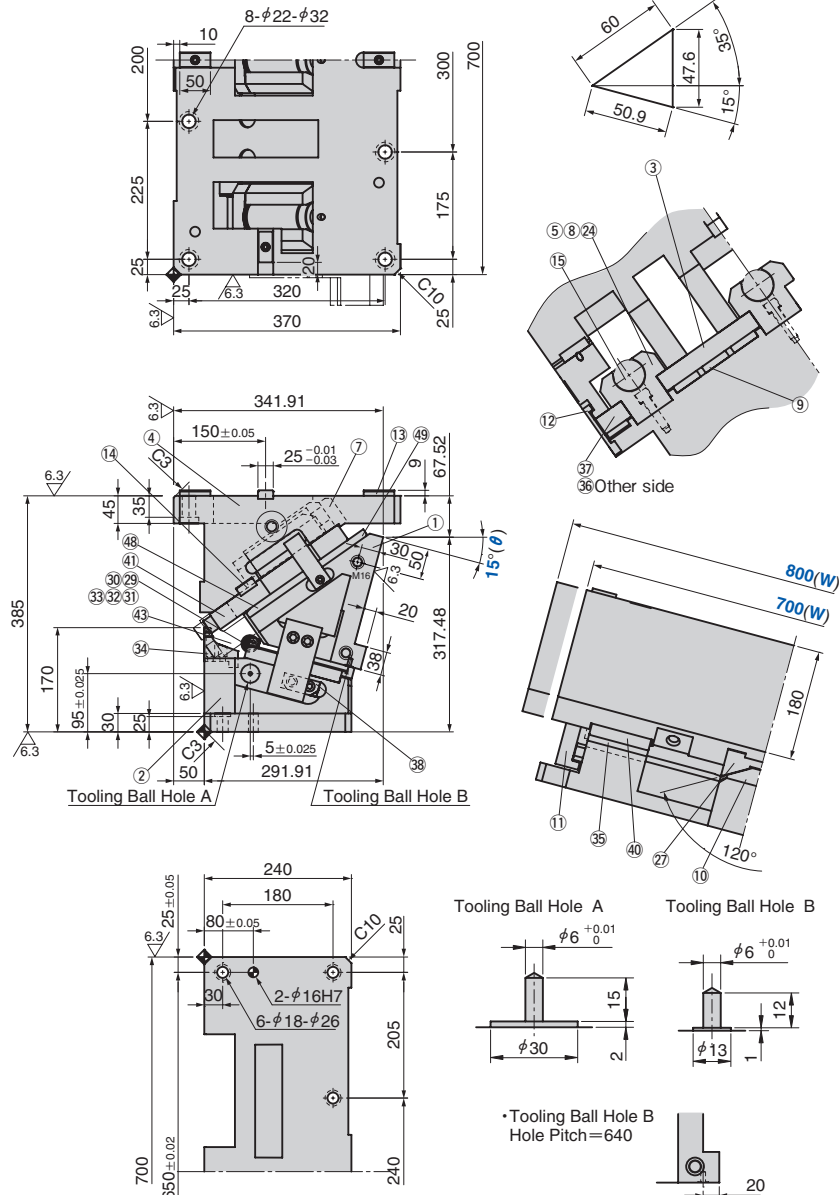
LARGE TYPE FOR PIERCE AND FLANGE

CAD FILE

UCMSL700 - 15 / UCMSL800 - 15

\*The cam diagram shows no roller bracket assemblies or accelerators. If these items are needed, please contact our sales department for details.

### Cam Diagram



Travel S	Working Force kN(tonf)	Spring Force N(kgf)		Return Force N(kgf)	Catalog No.	W	θ	Spring Type PS
		Initial Load	Final Load					
50.9	470.4 (48.0)	-	28023 (2859.5)	37871 (3864.4)	UCMSL	700 800	15	GK *NGK
								GD *NGD
								GS *NGS

\*Parts for spring assembly are included.



Order

Catalog No.	W	θ	PS
UCMSL	700	15	GK
UCMSL	800	15	NGK

.....Without gas spring

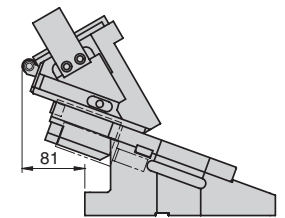
### Spring Specification (Qty 3)

No.	PS	Spring Model
15	GK	K750-80-TD (KALLER)
	GD	L.750.075.TO.140 (DADCO)
	GS	SM0750.75 (SDT)

### Weight (kg)

W	Slider Weight	Total Weight
700	152	357.0
800	158.9	363.8

### Space for removing



Option

Option Code	Specification
NF	Nitrogen gas not changed.



Order

UCMSL700 - 15 - GK - NF

### Table of Components

No.	Description	Qty	Material and Remark	No.	Description	Qty	Material and Remark
1	Cam Slider	1	FC250	29	Roller Bracket	1	S45C (1045)
2	Cam Driver	1	FC250	30	Roller	1	S45C (1045)
3	Base Plate A	2	S45C (1045)	31	Roller Pin	1	S45C (1045)
4	Cam Holder	1	FC250	32	Bushing	1	Bronze with Graphite (SOB12-18-16)
5	Spring Guide Block	3	Bronze with Graphite	33	Snap Ring E Type	2	φ9
7	Guide Pin Block	3	SS400 (1020)	34	Roller Driver	1	S45C (1045)
8	Spring Guide Plate	3	SS400 (1020)	35	Cam Slide Plate	2	Bronze with Graphite
9	Slide Lower Plate B	6	Bronze with Graphite	36	Base Plate B (R)	1	S45C (1045)
10	Cam Slide Guide	1	Bronze with Graphite	37	Base Plate B (L)	1	S45C (1045)
11	Positive Return Follower	2	S45C (1045)	38	Positive Return Block	2	Bronze with Graphite
12	Safety Plate	2	S45C (1045)	40	Lower Slide Plate B	2	S45C (1045)
13	Key A	4	SS400 (1020)	41	Stopper Plate	3	SS400 (1020)
14	Key B	6	SS400 (1020)	43	Locking Plate	2	SS400 (1020)
15	Gas Spring	3	Refer to the Spring Specification	48	Slide Plate	2	Bronze with Graphite
24	Stopper	6	Urethane PCU20	49	Slide Plate	2	Bronze with Graphite
27	Cam Slide Guide	1	S45C (1045)				



Bolts for assembly are not indicated.

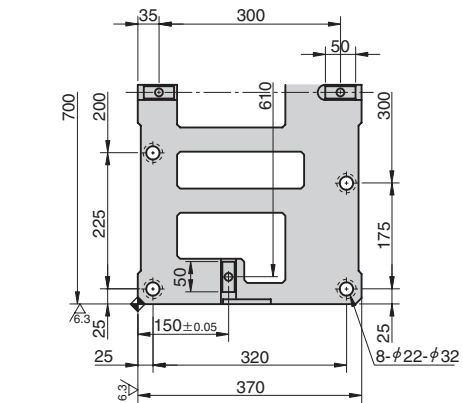
# Aerial Cam Unit

LARGE TYPE FOR PIERCE AND FLANGE

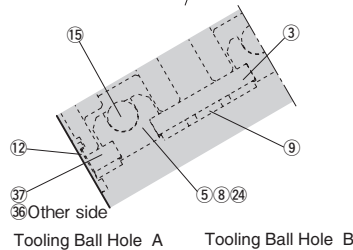
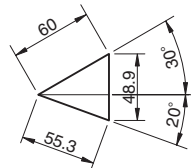
CAD FILE

UCMSL700 - 20 / UCMSL800 - 20

\*The cam diagram shows no roller bracket assemblies or accelerators. If these items are needed, please contact our sales department for details.

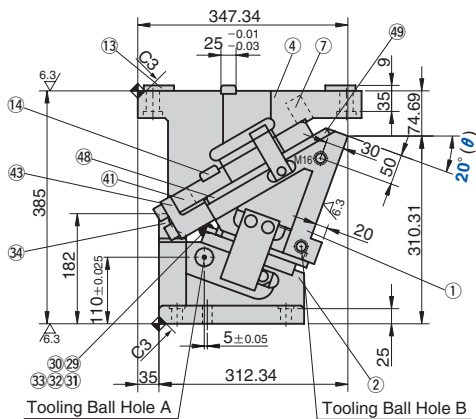
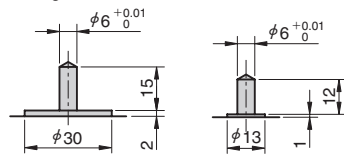


Cam Diagram



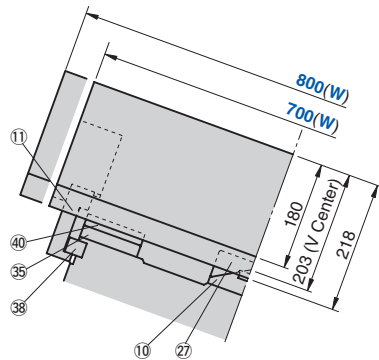
Tooling Ball Hole A

Tooling Ball Hole B

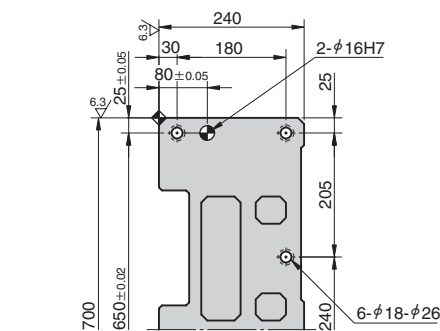
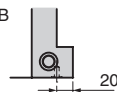


Tooling Ball Hole A

Tooling Ball Hole B



• Tooling Ball Hole B Hole Pitch = 640



Travel S	Working Force kN(tonf)	Spring Force N(kgf)		Return Force N(kgf)	Catalog No.	W	θ	Spring Type PS
		Initial Load	Final Load					
55.3	470.4 (48.0)	-	28023 (2859.5)	37712 (3848.2)	UCMSL	700 800	20	GK *NGK GD *NGD GS *NGS

\*Parts for spring assembly are included.



Order

Catalog No.	W	θ	PS
UCMSL	700	20	GK
UCMSL	800	20	NGK

.....Without gas spring

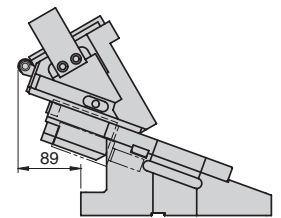
### Spring Specification (Qty 3)

No.	PS	Spring Model
	GK	K750-80-TD (KALLER)
15	GD	L.750.075.TO.140 (DADCO)
	GS	SM0750.75 (SDT)

### Weight (kg)

W	Slider Weight	Total Weight
700	152	356.1
800	158.9	363

### Space for removing



Option

Option Code	Specification
NF	Nitrogen gas not changed.



Order

UCMSL700 - 20 - GK - NF

### Table of Components

No.	Description	Qty	Material and Remark	No.	Description	Qty	Material and Remark
1	Cam Slider	1	FC250	29	Roller Bracket	1	S45C (1045)
2	Cam Driver	1	FC250	30	Roller	1	S45C (1045)
3	Base Plate A	2	S45C (1045)	31	Roller Pin	1	S45C (1045)
4	Cam Holder	1	FC250	32	Bushing	1	Bronze with Graphite (SOB12-18-16)
5	Spring Guide Block	3	Bronze with Graphite	33	Snap Ring E Type	2	φ9
7	Guide Pin Block	3	SS400 (1020)	34	Roller Driver	1	S45C (1045)
8	Spring Guide Plate	3	SS400 (1020)	35	Cam Slide Plate	2	Bronze with Graphite
9	Slide Lower Plate B	6	Bronze with Graphite	36	Base Plate B (R)	1	S45C (1045)
10	Cam Slide Guide	1	Bronze with Graphite	37	Base Plate B (L)	1	S45C (1045)
11	Positive Return Follower	2	S45C (1045)	38	Positive Return Block	2	Bronze with Graphite
12	Safety Plate	2	S45C (1045)	40	Lower Slide Plate B	2	S45C (1045)
13	Key A	4	SS400 (1020)	41	Stopper Plate	3	SS400 (1020)
14	Key B	6	SS400 (1020)	43	Locking Plate	2	SS400 (1020)
15	Gas Spring	3	Refer to the Spring Specification	48	Slide Plate	2	Bronze with Graphite
24	Stopper	6	Urethane PCU20	49	Slide Plate	2	Bronze with Graphite
27	Cam Slide Guide	1	S45C (1045)				



Bolts for assembly are not indicated.

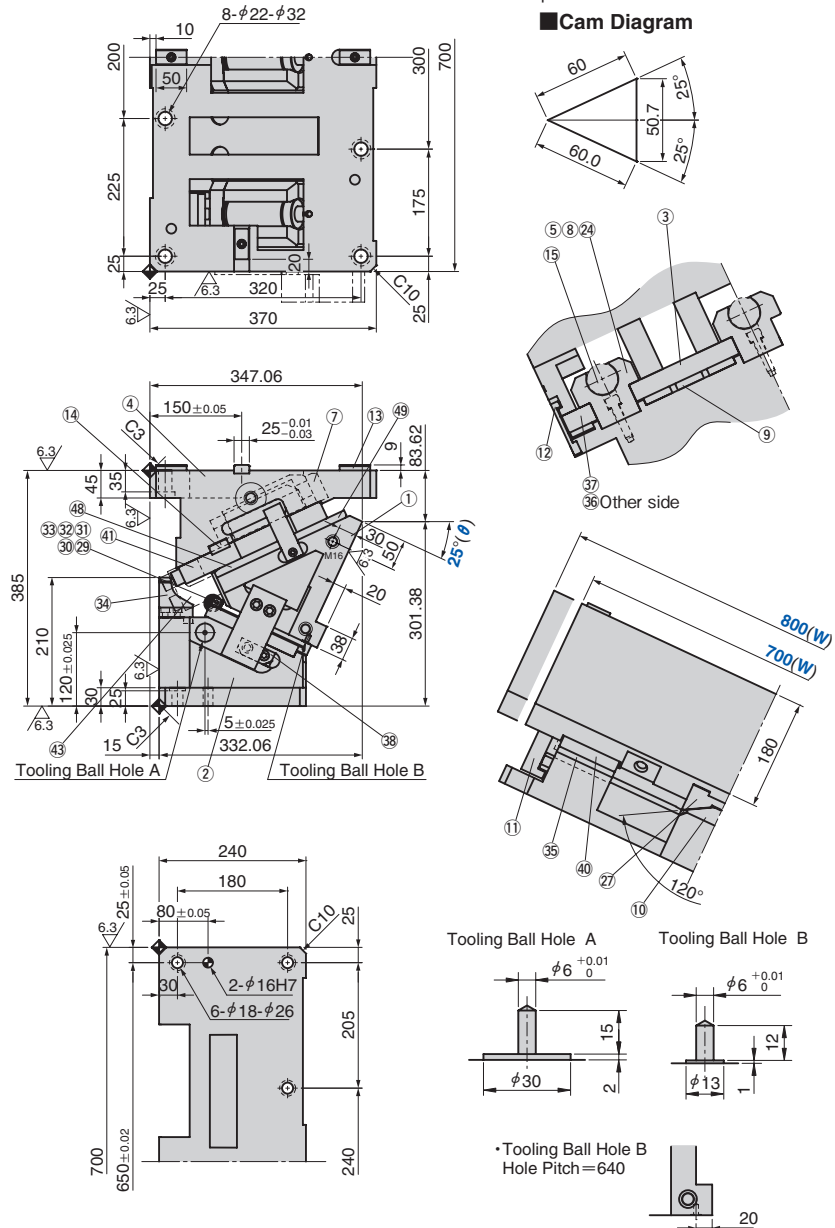
# Aerial Cam Unit

LARGE TYPE FOR PIERCE AND FLANGE

CAD FILE

UCMSL700 - 25 / UCMSL 800 - 25

\* The cam diagram shows no roller bracket assemblies or accelerators. If these items are needed, please contact our sales department for details.



Travel S	Working Force kN(tonf)	Spring Force N(kgf)		Return Force N(kgf)	Catalog No.	W	θ	Spring Type PS
		Initial Load	Final Load					
60.0	470.4 (48.0)	-	28023 (2859.5)	37548 (3831.4)	UCMSL	700 800	25	GK *NGK
								GD *NGD
								GS *NGS

\* Parts for spring assembly are included.



Order

Catalog No. W - θ - PS

UCMSL

700

-

25

-

GK

UCMSL

800

-

25

-

NGK

.....Without gas spring

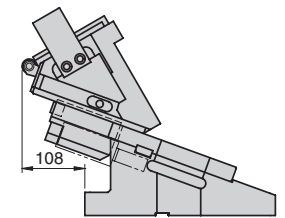
## Spring Specification (Qty 3)

No.	PS	Spring Model
	GK	K750-80-TD (KALLER)
15	GD	L.750.075.TO.140 (DADCO)
	GS	SM0750.75 (SDT)

## Weight (kg)

W	Slider Weight	Total Weight
700	152	357.3
800	158.9	364.2

## Space for removing



Option

Option Code	Specification
NF	Nitrogen gas not changed.



Order

UCMSL700 - 25 - GK - NF

## Table of Components

No.	Description	Qty	Material and Remark	No.	Description	Qty	Material and Remark
1	Cam Slider	1	FC250	29	Roller Bracket	1	S45C (1045)
2	Cam Driver	1	FC250	30	Roller	1	S45C (1045)
3	Base Plate A	2	S45C (1045)	31	Roller Pin	1	S45C (1045)
4	Cam Holder	1	FC250	32	Bushing	1	Bronze with Graphite (SOB12-18-16)
5	Spring Guide Block	3	Bronze with Graphite	33	Snap Ring E Type	2	φ9
7	Guide Pin Block	3	SS400 (1020)	34	Roller Driver	1	S45C (1045)
8	Spring Guide Plate	3	SS400 (1020)	35	Cam Slide Plate	2	Bronze with Graphite
9	Slide Lower Plate B	6	Bronze with Graphite	36	Base Plate B (R)	1	S45C (1045)
10	Cam Slide Guide	1	Bronze with Graphite	37	Base Plate B (L)	1	S45C (1045)
11	Positive Return Follower	2	S45C (1045)	38	Positive Return Block	2	Bronze with Graphite
12	Safety Plate	2	S45C (1045)	40	Lower Slide Plate B	2	S45C (1045)
13	Key A	4	SS400 (1020)	41	Stopper Plate	3	SS400 (1020)
14	Key B	6	SS400 (1020)	43	Locking Plate	2	SS400 (1020)
15	Gas Spring	3	Refer to the Spring Specification	48	Slide Plate	2	Bronze with Graphite
24	Stopper	6	Urethane PCU20	49	Slide Plate	2	Bronze with Graphite
27	Cam Slide Guide	1	S45C (1045)				



Bolts for assembly are not indicated.

# Aerial Cam Unit

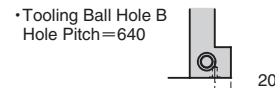
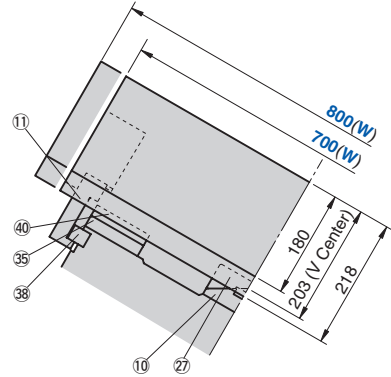
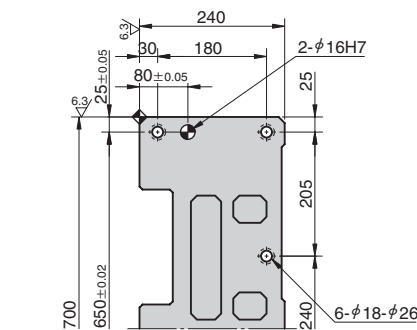
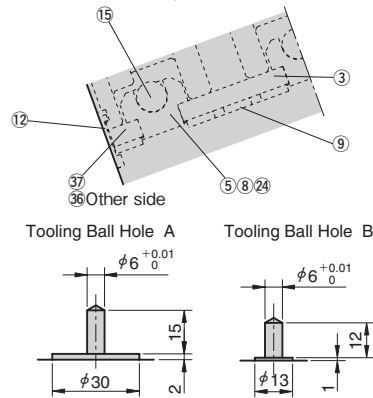
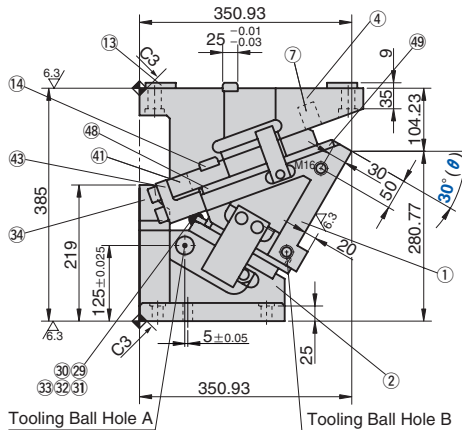
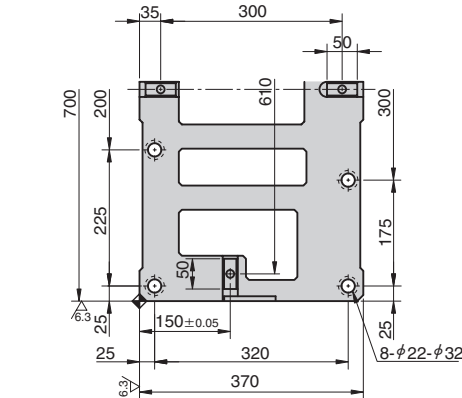
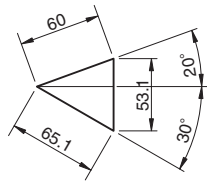
LARGE TYPE FOR PIERCE AND FLANGE



UCMSL700 - 30 / UCMSL800 - 30

\*The cam diagram shows no roller bracket assemblies or accelerators. If these items are needed, please contact our sales department for details.

### Cam Diagram



Travel S	Working Force kN(tonf)	Spring Force N(kgf)		Return Force N(kgf)	Catalog No.	W	θ	Spring Type PS
		Initial Load	Final Load					
65.1	470.4 (48.0)	-	28023 (2859.5)	37380 (3814.3)	UCMSL	700 800	30	GK *NGK GD *NGD GS *NGS

\*Parts for spring assembly are included.



Order

Catalog No.	W	θ	PS
UCMSL	700	30	GK
UCMSL	800	30	NGK

.....Without gas spring

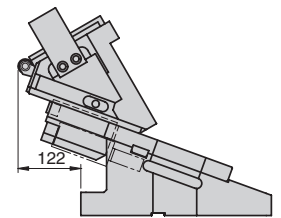
### Spring Specification (Qty 3)

No.	PS	Spring Model
	GK	K750-80-TD (KALLER)
15	GD	L.750.075.TO.140 (DADCO)
	GS	SM0750.75 (SDT)

### Weight (kg)

W	Slider Weight	Total Weight
700	152	362.7
800	158.9	369.5

### Space for removing



Option

Option Code	Specification
NF	Nitrogen gas not changed.



Order

UCMSL700 - 30 - GK - NF

### Table of Components

No.	Description	Qty	Material and Remark	No.	Description	Qty	Material and Remark
1	Cam Slider	1	FC250	29	Roller Bracket	1	S45C (1045)
2	Cam Driver	1	FC250	30	Roller	1	S45C (1045)
3	Base Plate A	2	S45C (1045)	31	Roller Pin	1	S45C (1045)
4	Cam Holder	1	FC250	32	Bushing	1	Bronze with Graphite (SOB12-18-16)
5	Spring Guide Block	3	Bronze with Graphite	33	Snap Ring E Type	2	φ9
7	Guide Pin Block	3	SS400 (1020)	34	Roller Driver	1	S45C (1045)
8	Spring Guide Plate	3	SS400 (1020)	35	Cam Slide Plate	2	Bronze with Graphite
9	Slide Lower Plate B	6	Bronze with Graphite	36	Base Plate B (R)	1	S45C (1045)
10	Cam Slide Guide	1	Bronze with Graphite	37	Base Plate B (L)	1	S45C (1045)
11	Positive Return Follower	2	S45C (1045)	38	Positive Return Block	2	Bronze with Graphite
12	Safety Plate	2	S45C (1045)	40	Lower Slide Plate B	2	S45C (1045)
13	Key A	4	SS400 (1020)	41	Stopper Plate	3	SS400 (1020)
14	Key B	6	SS400 (1020)	43	Locking Plate	2	SS400 (1020)
15	Gas Spring	3	Refer to the Spring Specification	48	Slide Plate	2	Bronze with Graphite
24	Stopper	6	Urethane PCU20	49	Slide Plate	2	Bronze with Graphite
27	Cam Slide Guide	1	S45C (1045)				



Bolts for assembly are not indicated.

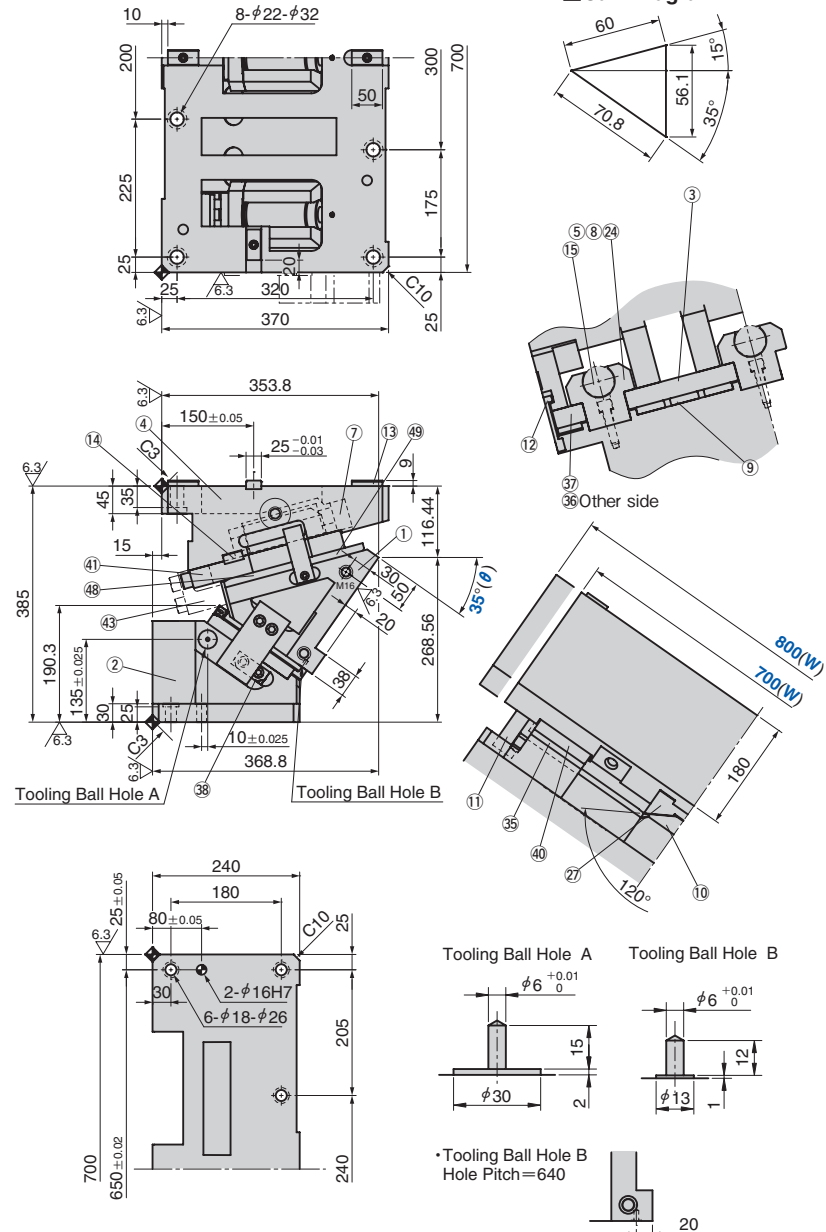


# Aerial Cam Unit

LARGE TYPE FOR PIERCE AND FLANGE

CAD FILE

UCMSL700 - 35 / UCMSL 800 - 35



Travel S	Working Force kN(tonf)	Spring Force N(kgf)		Return Force N(kgf)	Catalog No.	W	θ	Spring Type PS
		Initial Load	Final Load					
70.8	470.4 (48.0)	-	28023 (2859.5)	37209 (3796.8)	UCMSL	700 800	35	GK *NGK
								GD *NGD
								GS *NGS

\* Parts for spring assembly are included.



Order

Catalog No.	W	θ	PS
UCMSL	700	35	GK
UCMSL	800	35	NGK

.....Without gas spring

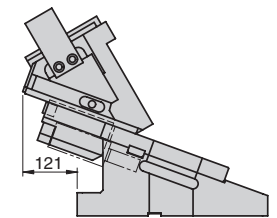
### Spring Specification (Qty 3)

No.	PS	Spring Model
15	GK	K750-80-TD (KALLER)
	GD	L.750.075.TO.140 (DADCO)
	GS	SM0750.75 (SDT)

### Weight (kg)

W	Slider Weight	Total Weight
700	152	370.6
800	158.9	377.4

### Space for removing



Option

Option Code	Specification
NF	Nitrogen gas not changed.



Order

UCMSL700 - 35 - GK - NF

### Table of Components

No.	Description	Qty	Material and Remark
①	Cam Slider	1	FC250
②	Cam Driver	1	FC250
③	Base Plate A	2	S45C (1045)
④	Cam Holder	1	FC250
⑤	Spring Guide Block	3	Bronze with Graphite
⑦	Guide Pin Block	3	SS400 (1020)
⑧	Spring Guide Plate	3	SS400 (1020)
⑨	Slide Lower Plate B	6	Bronze with Graphite
⑩	Cam Slide Guide	1	Bronze with Graphite
⑪	Positive Return Follower	2	S45C (1045)
⑫	Safety Plate	2	S45C (1045)
⑬	Key A	4	SS400 (1020)
⑭	Key B	6	SS400 (1020)
⑮	Gas Spring	3	Refer to the Spring Specification
⑳	Stopper	6	Urethane PCU20

No.	Description	Qty	Material and Remark
㉗	Cam Slide Guide	1	S45C (1045)
㉘	Cam Slide Plate	2	Bronze with Graphite
㉙	Base Plate B (R)	1	S45C (1045)
㉚	Base Plate B (L)	1	S45C (1045)
㉛	Positive Return Block	2	Bronze with Graphite
㉜	Lower Slide Plate B	2	S45C (1045)
㉝	Stopper Plate	3	SS400 (1020)
㉞	Locking Plate	2	SS400 (1020)
㉟	Slide Plate	2	Bronze with Graphite
㊱	Slide Plate	2	Bronze with Graphite

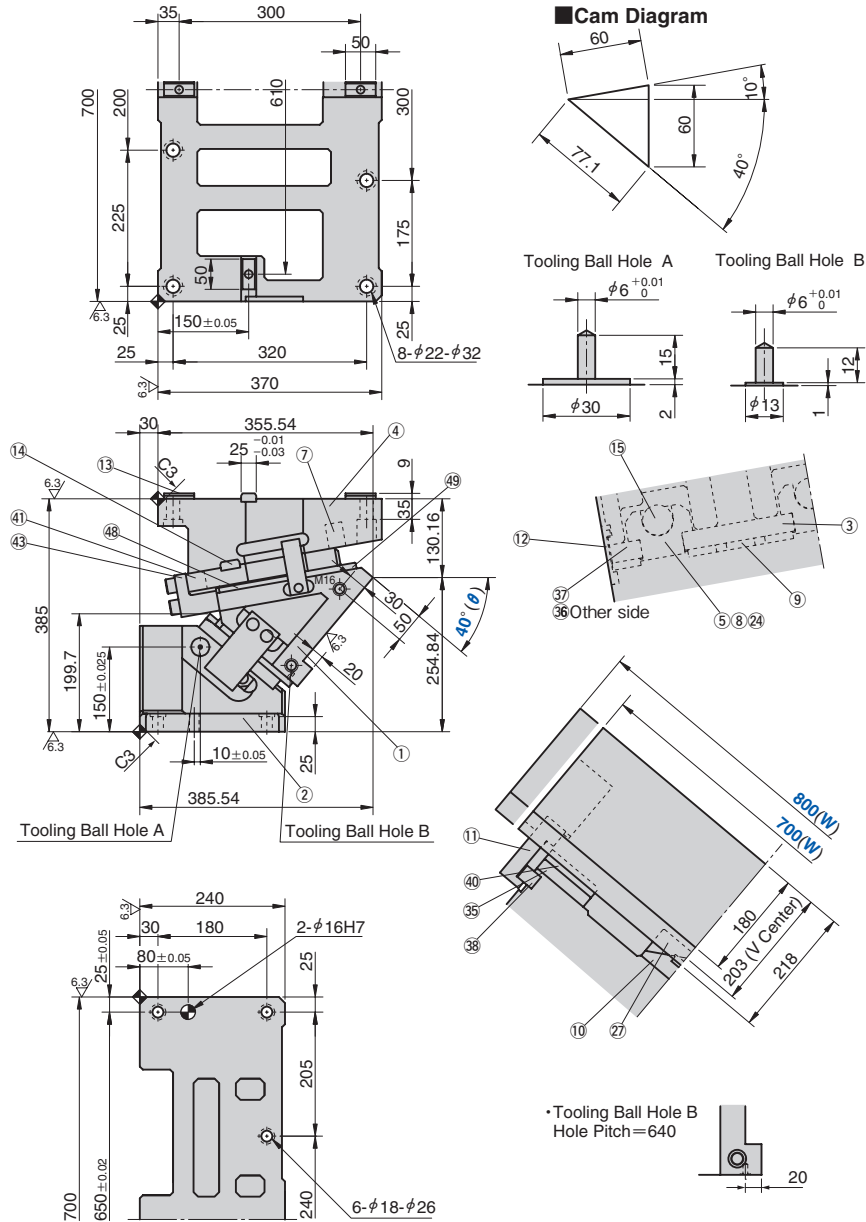
⚠ Bolts for assembly are not indicated.

# Aerial Cam Unit

LARGE TYPE FOR PIERCE AND FLANGE



UCMSL700 - 40 / UCMSL800 - 40



Travel S	Working Force kN(tonf)	Spring Force N(kgf)		Return Force N(kgf)	Catalog No.	W	$\theta$	Spring Type PS
		Initial Load	Final Load					
77.1	470.4 (48.0)	-	28023 (2859.5)	37036 (3779.1)	UCMSL	700 800	40	GK *NGK GD *NGD GS *NGS

\*Parts for spring assembly are included.



Order

Catalog No.	W	$\theta$	PS
UCMSL 700	700	40	GK
UCMSL 800	800	40	NGK

.....Without gas spring

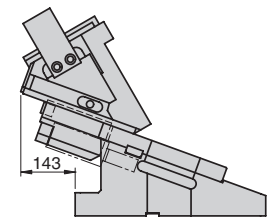
### Spring Specification (Qty 3)

No.	PS	Spring Model
	GK	K750-80-TD (KALLER)
15	GD	L.750.075.TO.140 (DADCO)
	GS	SM0750.75 (SDT)

### Weight (kg)

W	Slider Weight	Total Weight
700	152	377.0
800	158.9	383.8

### Space for removing



Option

Option Code	Specification
NF	Nitrogen gas not changed.



Order

UCMSL700 - 40 - GK - NF

### Table of Components

No.	Description	Qty	Material and Remark
①	Cam Slider	1	FC250
②	Cam Driver	1	FC250
③	Base Plate A	2	S45C (1045)
④	Cam Holder	1	FC250
⑤	Spring Guide Block	3	Bronze with Graphite
⑦	Guide Pin Block	3	SS400 (1020)
⑧	Spring Guide Plate	3	SS400 (1020)
⑨	Slide Lower Plate B	6	Bronze with Graphite
⑩	Cam Slide Guide	1	Bronze with Graphite
⑪	Positive Return Follower	2	S45C (1045)
⑫	Safety Plate	2	S45C (1045)
⑬	Key A	4	SS400 (1020)
⑭	Key B	6	SS400 (1020)
⑮	Gas Spring	3	Refer to the Spring Specification
⑳	Stopper	6	Urethane PCU20

No.	Description	Qty	Material and Remark
㉗	Cam Slide Guide	1	S45C (1045)
㉘	Cam Slide Plate	2	Bronze with Graphite
㉙	Base Plate B (R)	1	S45C (1045)
㉚	Base Plate B (L)	1	S45C (1045)
㉛	Positive Return Block	2	Bronze with Graphite
㉜	Lower Slide Plate B	2	S45C (1045)
㉝	Stopper Plate	3	SS400 (1020)
㉞	Locking Plate	2	SS400 (1020)
㉟	Slide Plate	2	Bronze with Graphite
㊱	Slide Plate	2	Bronze with Graphite



Bolts for assembly are not indicated.

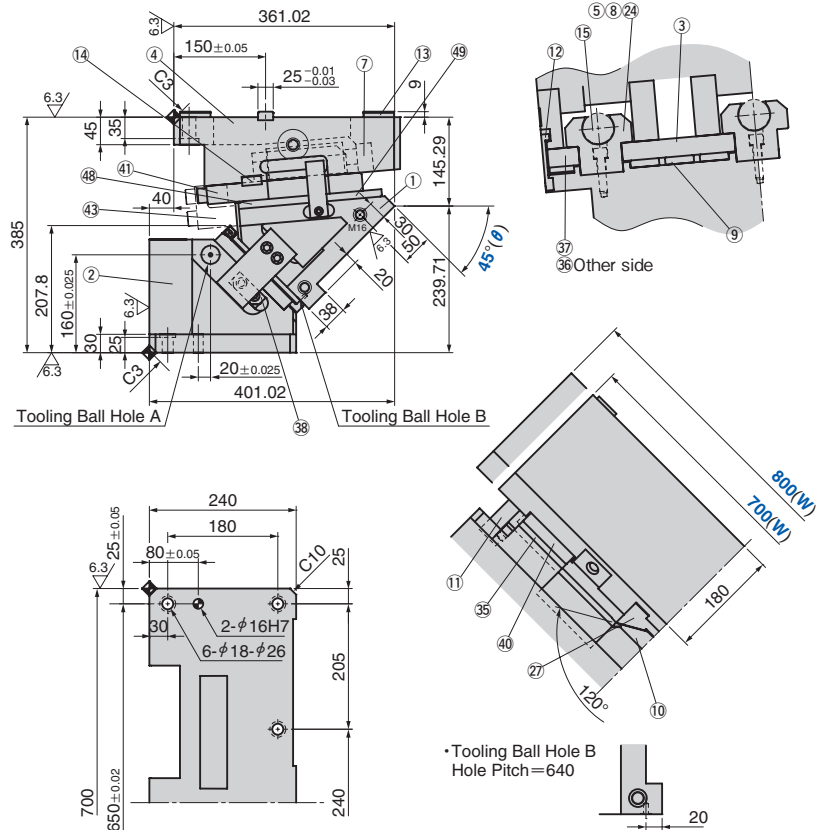
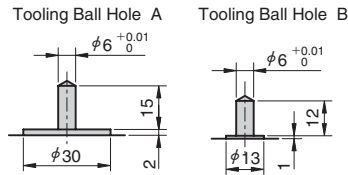
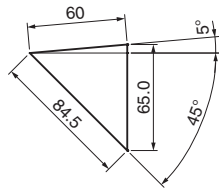
# Aerial Cam Unit

LARGE TYPE FOR PIERCE AND FLANGE



UCMSL700 - 45 / UCMSL 800 - 45

### Cam Diagram



Travel S	Working Force kN(tonf)	Spring Force N(kgf)		Return Force N(kgf)	Catalog No.	W	θ	Spring Type PS
		Initial Load	Final Load					
84.5	470.4 (48.0)	-	28023 (2859.5)	36862 (3761.4)	UCMSL	700 800	45	GK *NGK GD *NGD GS *NGS

\*Parts for spring assembly are included.



Order

Catalog No.	W	θ	PS
UCMSL 700	700	45	GK
UCMSL 800	800	45	NGK

.....Without gas spring

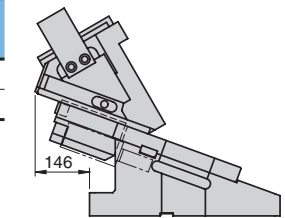
### Spring Specification (Qty 3)

No.	PS	Spring Model
	GK	K750-80-TD (KALLER)
15	GD	L.750.075.TO.140 (DADCO)
	GS	SM0750.75 (SDT)

### Weight (kg)

W	Slider Weight	Total Weight
700	152	383.6
800	158.9	390.4

### Space for removing



Option

Option Code	Specification
NF	Nitrogen gas not changed.



Order

UCMSL700 - 45 - GK - NF

### Table of Components

No.	Description	Qty	Material and Remark	No.	Description	Qty	Material and Remark
1	Cam Slider	1	FC250	27	Cam Slide Guide	1	S45C (1045)
2	Cam Driver	1	FC250	35	Cam Slide Plate	2	Bronze with Graphite
3	Base Plate A	2	S45C (1045)	36	Base Plate B (R)	1	S45C (1045)
4	Cam Holder	1	FC250	37	Base Plate B (L)	1	S45C (1045)
5	Spring Guide Block	3	Bronze with Graphite	38	Positive Return Block	2	Bronze with Graphite
7	Guide Pin Block	3	SS400 (1020)	40	Lower Slide Plate B	2	S45C (1045)
8	Spring Guide Plate	3	SS400 (1020)	41	Stopper Plate	3	SS400 (1020)
9	Slide Lower Plate B	6	Bronze with Graphite	43	Locking Plate	2	SS400 (1020)
10	Cam Slide Guide	1	Bronze with Graphite	48	Slide Plate	2	Bronze with Graphite
11	Positive Return Follower	2	S45C (1045)	49	Slide Plate	2	Bronze with Graphite
12	Safety Plate	2	S45C (1045)				
13	Key A	4	SS400 (1020)				
14	Key B	6	SS400 (1020)				
15	Gas Spring	3	Refer to the Spring Specification				
24	Stopper	6	Urethane PCU20				



Bolts for assembly are not indicated.

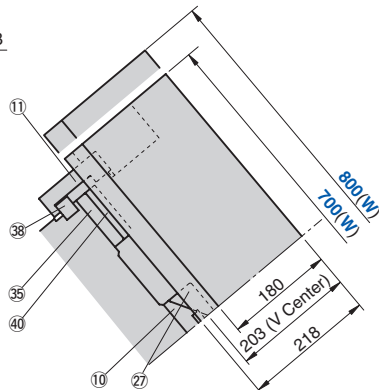
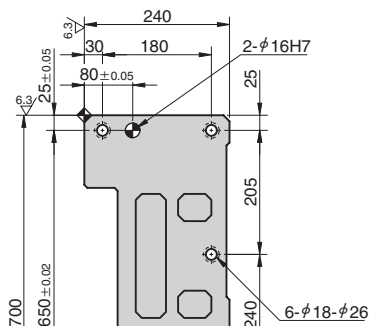
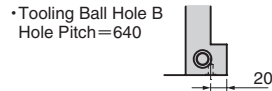
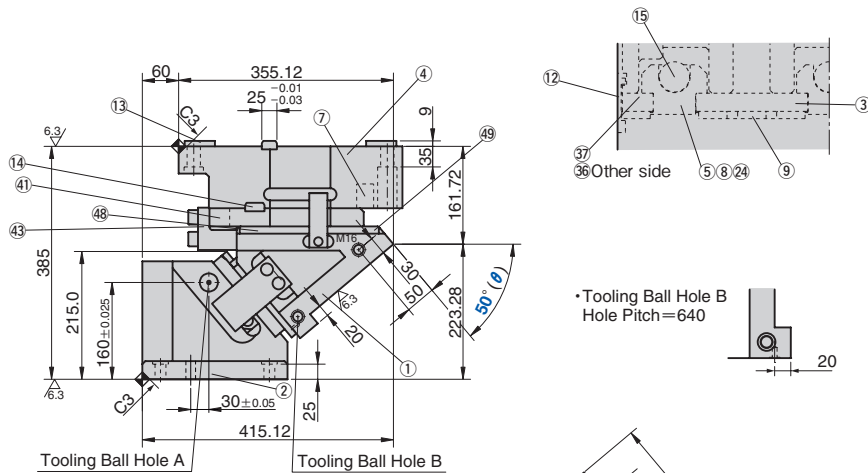
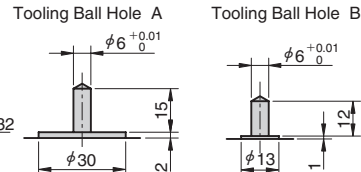
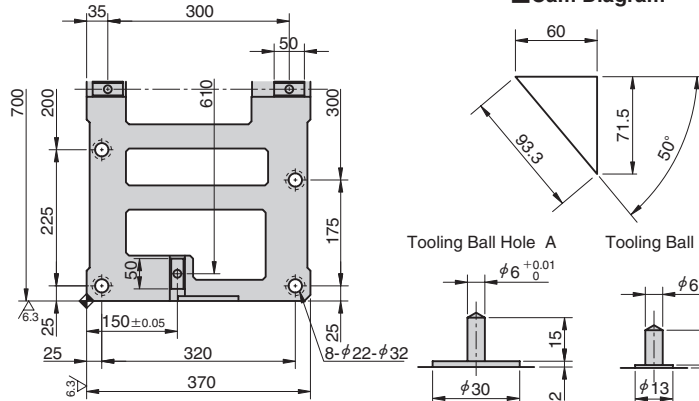
# Aerial Cam Unit

LARGE TYPE FOR PIERCE AND FLANGE

CAD FILE

UCMSL700 - 50 / UCMSL800 - 50

### Cam Diagram



Travel S	Working Force kN(tonf)	Spring Force N(kgf)		Return Force N(kgf)	Catalog No.	W	θ	Spring Type PS
		Initial Load	Final Load					
93.3	470.4 (48.0)	-	28023 (2859.5)	36690 (3743.8)	UCMSL	700 800	50	GK *NGK GD *NGD GS *NGS

\* Parts for spring assembly are included.



Order

Catalog No.	W	θ	PS
UCMSL	700	50	GK
UCMSL	800	50	NGK

.....Without gas spring

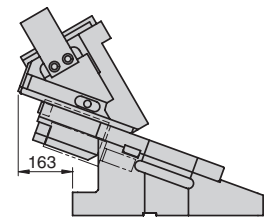
### Spring Specification (Qty 3)

No.	PS	Spring Model
	GK	K750-80-TD (KALLER)
15	GD	L.750.075.TO.140 (DADCO)
	GS	SM0750.75 (SDT)

### Weight (kg)

W	Slider Weight	Total Weight
700	152	386.5
800	158.9	393.4

### Space for removing



Option

Option Code	Specification
NF	Nitrogen gas not changed.



Order

UCMSL700 - 50 - GK - NF

### Table of Components

No.	Description	Qty	Material and Remark	No.	Description	Qty	Material and Remark
1	Cam Slider	1	FC250	24	Stopper	6	Urethane PCU20
2	Cam Driver	1	FC250	27	Cam Slide Guide	1	S45C (1045)
3	Base Plate A	2	S45C (1045)	35	Cam Slide Plate	2	Bronze with Graphite
4	Cam Holder	1	FC250	36	Base Plate B (R)	1	S45C (1045)
5	Spring Guide Block	3	Bronze with Graphite	37	Base Plate B (L)	1	S45C (1045)
7	Guide Pin Block	3	SS400 (1020)	38	Positive Return Block	2	Bronze with Graphite
8	Spring Guide Plate	3	SS400 (1020)	40	Lower Slide Plate B	2	S45C (1045)
9	Slide Lower Plate B	6	Bronze with Graphite	41	Stopper Plate	3	SS400 (1020)
10	Cam Slide Guide	1	Bronze with Graphite	43	Locking Plate	2	SS400 (1020)
11	Positive Return Follower	2	S45C (1045)	48	Slide Plate	2	Bronze with Graphite
12	Safety Plate	2	S45C (1045)	49	Slide Plate	2	Bronze with Graphite
13	Key A	4	SS400 (1020)				
14	Key B	6	SS400 (1020)				
15	Gas Spring	3	Refer to the Spring Specification				



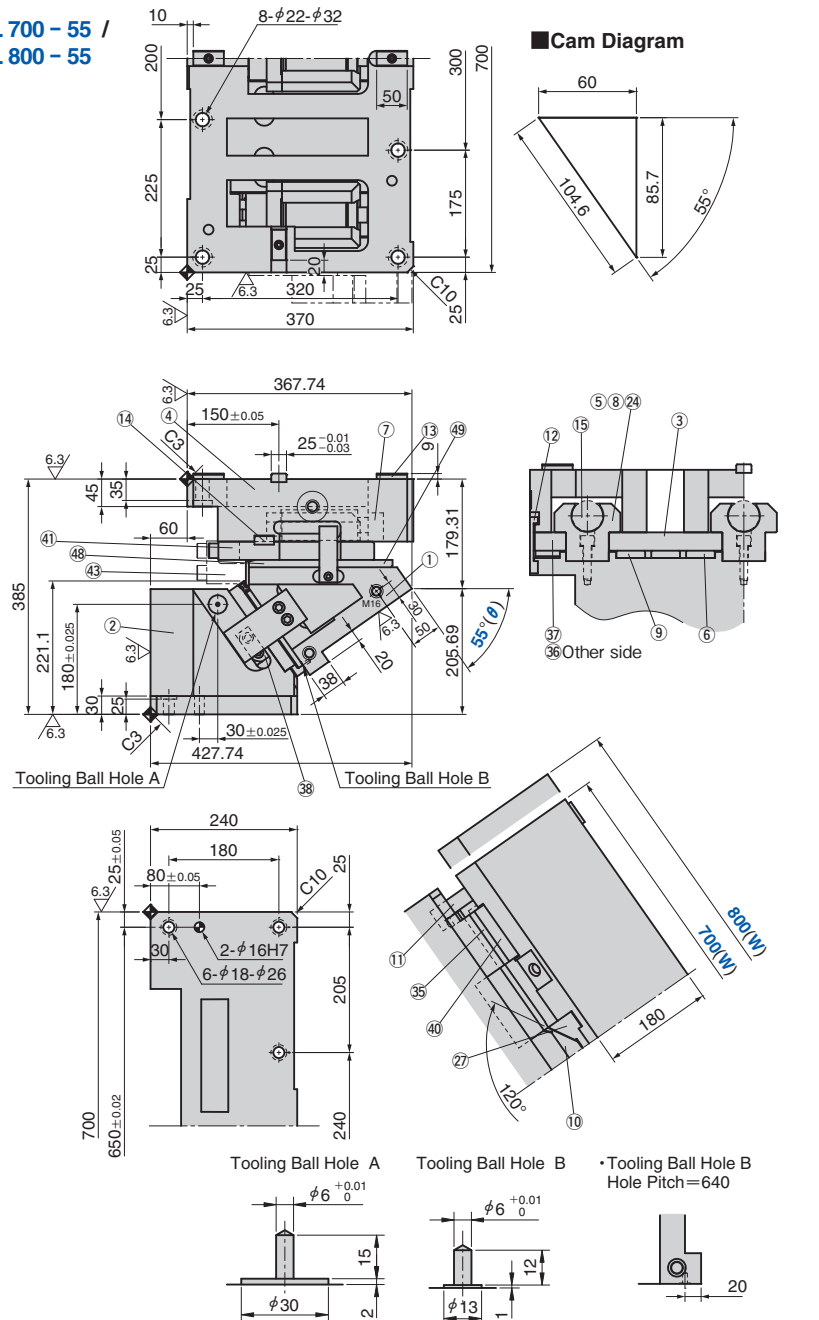
Bolts for assembly are not indicated.

# Aerial Cam Unit

LARGE TYPE FOR PIERCE AND FLANGE

CAD  
FILE

UCMSL 700 - 55 /  
UCMSL 800 - 55



Travel S	Working Force kN(tonf)	Spring Force N(kgf)		Return Force N(kgf)	Catalog No.	W	θ	Spring Type PS
		Initial Load	Final Load					
104.6	470.4 (48.0)	-	28023 (2859.5)	39900 (4071.4)	UCMSL	700 800	55	GK *NGK GD *NGD GS *NGS

\* Parts for spring assembly are included.



Order

Catalog No.	W	θ	PS
UCMSL	700	55	GK
UCMSL	800	55	NGK

.....Without gas spring

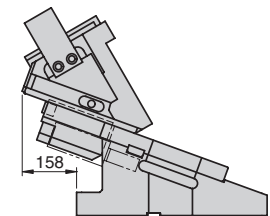
### Spring Specification (Qty 3)

No.	PS	Spring Model
	GK	K750-80-TD (KALLER)
15	GD	L.750.075.TO.140 (DADCO)
	GS	SM0750.75 (SDT)

### Weight (kg)

W	Slider Weight	Total Weight
700	159.8	400.8
800	167.5	408.3

### Space for removing



Option

Option Code	Specification
NF	Nitrogen gas not changed.



Order

UCMSL700 - 55 - GK - NF

### Table of Components

No.	Description	Qty	Material and Remark	No.	Description	Qty	Material and Remark
1	Cam Slider	1	FC250	24	Stopper	6	Urethane PCU20
2	Cam Driver	1	FC250	27	Cam Slide Guide	1	S45C (1045)
3	Base Plate A	2	S45C (1045)	35	Cam Slide Plate	2	Bronze with Graphite
4	Cam Holder	1	FC250	36	Base Plate B (R)	1	S45C (1045)
5	Spring Guide Block	3	Bronze with Graphite	37	Base Plate B (L)	1	S45C (1045)
6	Slide Lower Plate A	2	Bronze with Graphite	38	Positive Return Block	2	Bronze with Graphite
7	Guide Pin Block	3	SS400 (1020)	40	Lower Slide Plate B	2	S45C (1045)
8	Spring Guide Plate	3	SS400 (1020)	41	Stopper Plate	3	SS400 (1020)
9	Slide Lower Plate B	4	Bronze with Graphite	43	Locking Plate	2	SS400 (1020)
10	Cam Slide Guide	1	Bronze with Graphite	48	Slide Plate	2	Bronze with Graphite
11	Positive Return Follower	2	S45C (1045)	49	Slide Plate	2	Bronze with Graphite
12	Safety Plate	2	S45C (1045)				
13	Key A	4	SS400 (1020)				
14	Key B	6	SS400 (1020)				
15	Gas Spring	3	Refer to the Spring Specification				



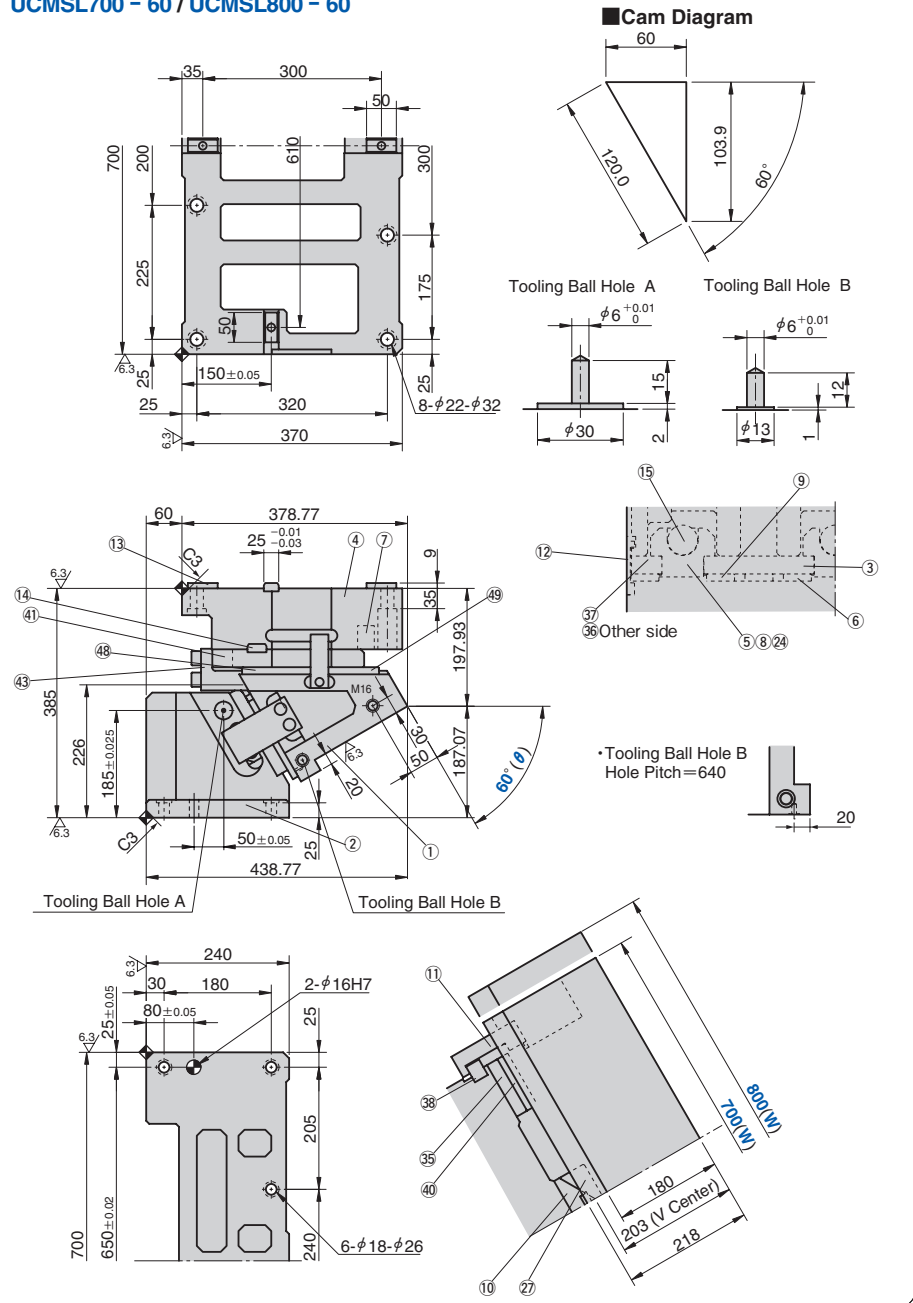
Bolts for assembly are not indicated.

# Aerial Cam Unit

LARGE TYPE FOR PIERCE AND FLANGE

CAD  
FILE

UCMSL700 - 60 / UCMSL800 - 60



Travel S	Working Force kN(tonf)	Spring Force N(kgf)		Return Force N(kgf)	Catalog No.	W	θ	Spring Type PS
		Initial Load	Final Load					
120.0	470.4 (48.0)	-	28023 (2859.5)	44098 (4499.8)	UCMSL	700 800	60	GK *NGK GD *NGD GS *NGS

\* Parts for spring assembly are included.



Order

Catalog No.	W	θ	PS
UCMSL 700	700	60	GK
UCMSL 800	800	60	NGK

.....Without gas spring

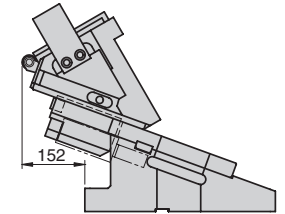
### Spring Specification (Qty 3)

No.	PS	Spring Model
	GK	K750-80-TD (KALLER)
15	GD	L.750.075.TO.140 (DADCO)
	GS	SM0750.75 (SDT)

### Weight (kg)

W	Slider Weight	Total Weight
700	166.8	412.7
800	175.3	421.2

### Space for removing



Option

Option Code	Specification
NF	Nitrogen gas not changed.



Order

UCMSL700 - 60 - GK - NF

### Table of Components

No.	Description	Qty	Material and Remark	No.	Description	Qty	Material and Remark
1	Cam Slider	1	FC250	24	Stopper	6	Urethane PCU20
2	Cam Driver	1	FC250	27	Cam Slide Guide	1	S45C (1045)
3	Base Plate A	2	S45C (1045)	35	Cam Slide Plate	2	Bronze with Graphite
4	Cam Holder	1	FC250	36	Base Plate B (R)	1	S45C (1045)
5	Spring Guide Block	3	Bronze with Graphite	37	Base Plate B (L)	1	S45C (1045)
6	Slide Lower Plate A	2	Bronze with Graphite	38	Positive Return Block	2	Bronze with Graphite
7	Guide Pin Block	3	SS400 (1020)	40	Lower Slide Plate B	2	S45C (1045)
8	Spring Guide Plate	3	SS400 (1020)	41	Stopper Plate	3	SS400 (1020)
9	Slide Lower Plate B	4	Bronze with Graphite	43	Locking Plate	2	SS400 (1020)
10	Cam Slide Guide	1	Bronze with Graphite	48	Slide Plate	2	Bronze with Graphite
11	Positive Return Follower	2	S45C (1045)	49	Slide Plate	2	Bronze with Graphite
12	Safety Plate	2	S45C (1045)				
13	Key A	4	SS400 (1020)				
14	Key B	6	SS400 (1020)				
15	Gas Spring	3	Refer to the Spring Specification				



Bolts for assembly are not indicated.