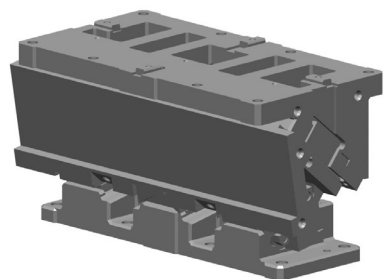


ピアス・フランジ用ラージタイプ 吊りカムユニット UCMSL 概要

OUTLINE OF UCMSL

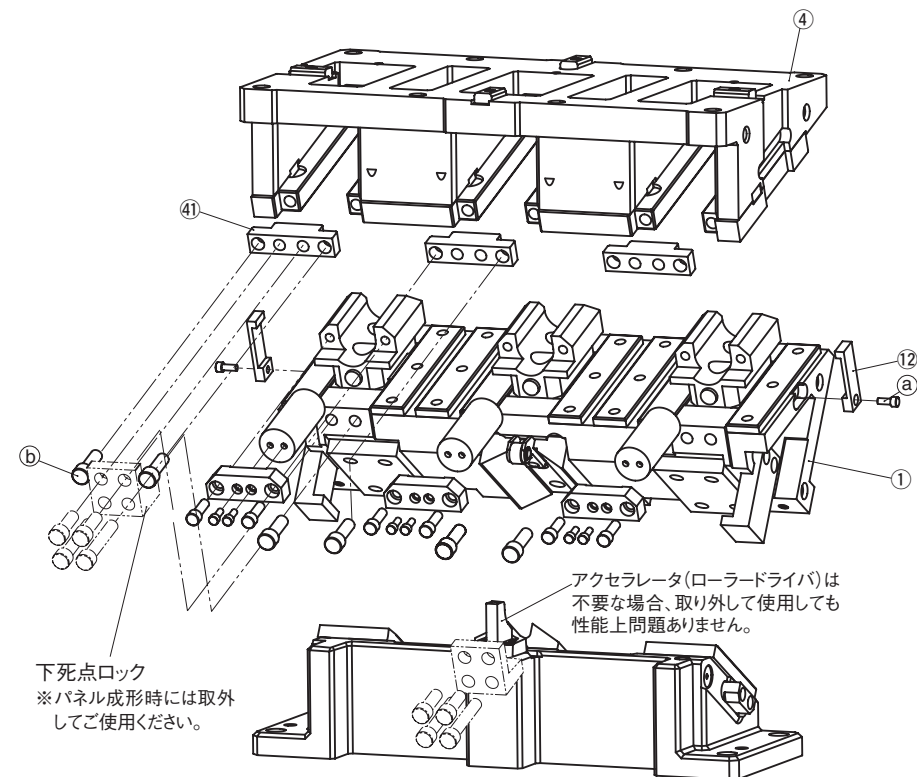


- マウント面幅 500 ～ 1000mm まで、100mm 飛びにラインナップ。
- 角度は 0° ～ 60°、5° 飛びでラインナップ。
- スプリングの後方抜きが可能なので、下死点調整が容易。
- ▲ マウント面幅 1600mm まで対応可能です。営業窓口までご相談ください。
- ▲ 65°、70°、75° 対応可能です。営業窓口までご相談ください。
- ▲ Gas Spring 取扱い
 - ・弊社推奨品以外の Gas Spring をご使用の場合はまず、営業窓口までご相談下さい。
 - ・ Gas Spring 単体でのメンテナンスを含む取扱いについては Gas Spring メーカーにお問い合わせ下さい。

■ UCMSL 仕様諸元

マウント面 幅	高さ	加工角	ストローク	加工力 kN (tonf)	スプリング力 N (kgf)
500 600	180	00	38.6	313.6(32.0)	18682.0(1906.3)
		05	42.6		
		10	46.7		
		15	50.9		
		20	55.3		
		25	60.0		
		30	65.1		
		35	70.8		
		40	77.1		
		45	84.5		
		50	93.3		
		55	104.6		
60	120.0				
700 800	180	00	38.6	470.4(48.0)	28023.0(2859.5)
		05	42.6		
		10	46.7		
		15	50.9		
		20	55.3		
		25	60.0		
		30	65.1		
		35	70.8		
		40	77.1		
		45	84.5		
		50	93.3		
		55	104.6		
60	120.0				
900 1000	180	00	38.6	627.2(64.0)	37364.0(3812.7)
		05	42.6		
		10	46.7		
		15	50.9		
		20	55.3		
		25	60.0		
		30	65.1		
		35	70.8		
		40	77.1		
		45	84.6		
		50	93.3		
		55	104.6		
60	120.0				

■ UCMSL の構造と分解・組立



● UCMSL の分解方法

- 1) 六角穴付きボルト (Ⓐ) を緩めセーフティプレート (12) を外します。
- 2) 六角穴付きボルト (Ⓑ) を緩めストッププレート (11) を外します。
- 3) カムスライダ (1) をカムホルダ (4) から後方へ引き抜きます。

● UCMSL の組立方法

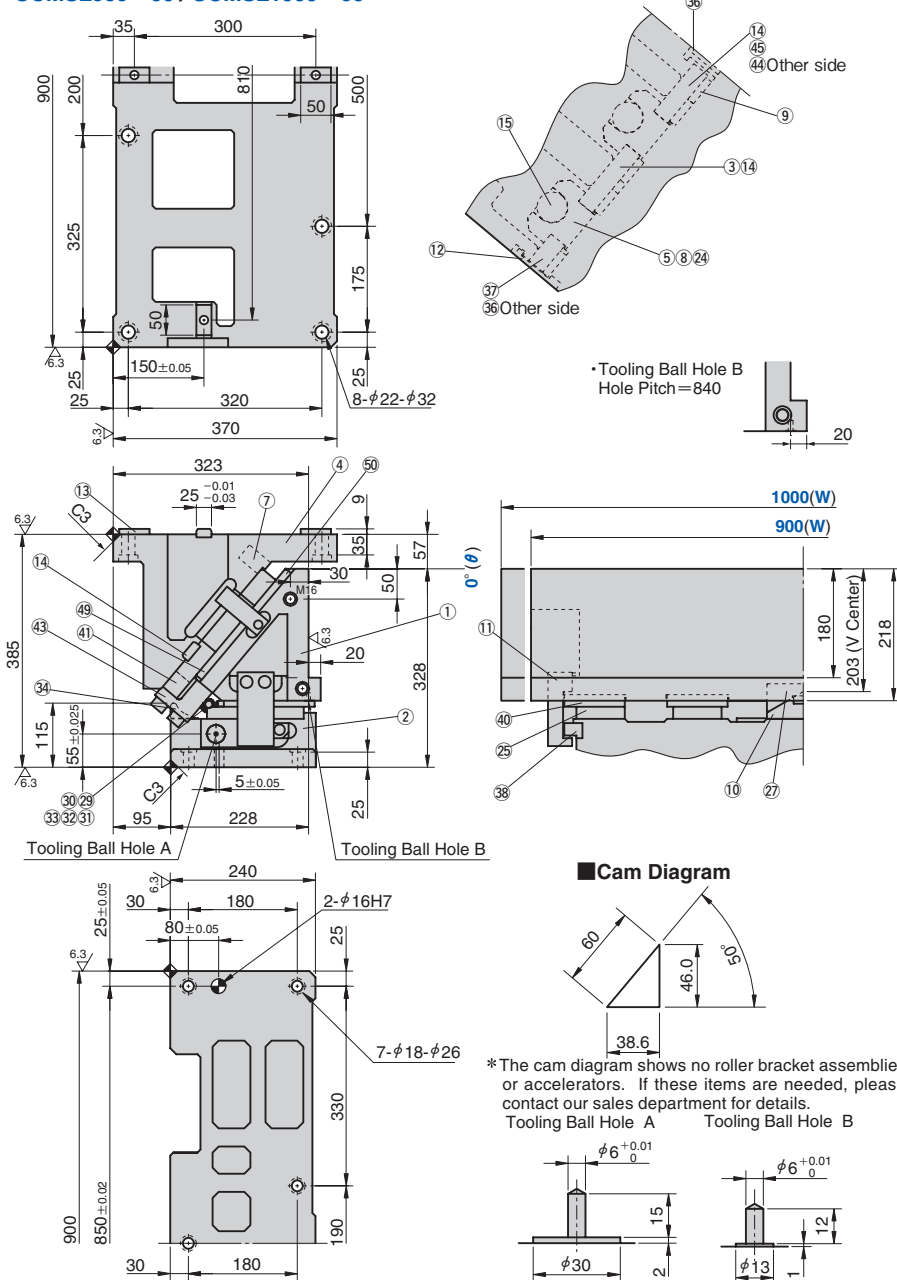
- 1) 組立は分解と逆の手順で行ってください。
 - ・摺動部に異物が付着していない事を確認して、グリスを塗布し組み立ててください。
 - ・カムスライダとカムホルダはクリアランス管理をしていますので、刻印されているシリアルナンバーを確認して組み立ててください。
 - ・分解・組立後、ボルトの締め忘れ等がないようご注意ください。

Aerial Cam Unit

LARGE TYPE FOR PIERCE AND FLANGE



UCMSL900 - 00 / UCMSL1000 - 00



Travel S	Working Force kN(tonf)	Working Force kN		Return Force N(kgf)	Catalog No.	W	θ	Spring Type PS
		Initial Load	Final Load					
38.6	627.2 (64.0)	-	37364 (3812.7)	51041 (5208.2)	UCMSL	900 1000	00	GK *NGK GD *NGD GS *NGS

*Parts for spring assembly are included.



Order Catalog No. W - θ - PS

UCMSL 900 - 00 - GK
UCMSL 1000 - 00 - NGKWithout gas spring

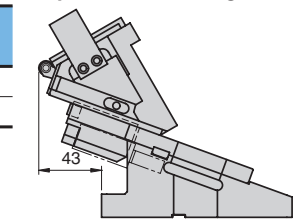
Spring Specification (Qty 4)

No.	PS	Spring Model
	GK	K750-80-TD (KALLER)
15	GD	L.750.075.TO.140 (DADCO)
	GS	SM0750.75 (SDT)

Weight (kg)

W	Slider Weight	Total Weight
900	199.5	463.3
1000	206.4	470.2

Space for removing



Option Code	Specification
NF	Nitrogen gas not changed.



Order UCMSL900 - 00 - GK - NF

Table of Components

No.	Description	Qty	Material and Remark
1	Cam Slider	1	FC250
2	Cam Driver	1	FC250
3	Base Plate A	2	S45C (1045)
4	Cam Holder	1	FC250
5	Spring Guide Block	4	Bronze with Graphite
7	Guide Pin Block	4	SS400 (1020)
8	Spring Guide Plate	4	SS400 (1020)
9	Slide Lower Plate B	8	Bronze with Graphite
10	Cam Slide Guide	1	Bronze with Graphite
11	Positive Return Follower	2	S45C (1045)
12	Safety Plate	2	S45C (1045)
13	Key A	4	SS400 (1020)
14	Key B	6	SS400 (1020)
15	Gas Spring	4	Refer to the Spring Specification
24	Stopper	8	Urethane PCU20
25	Cam Slide Plate	4	Bronze with Graphite
27	Cam Slide Guide	1	S45C (1045)

No.	Description	Qty	Material and Remark
29	Roller Bracket	2	S45C (1045)
30	Roller	2	S45C (1045)
31	Roller Pin	2	S45C (1045)
32	Bushing	2	Bronze with Graphite (SOB12-18-16)
33	Snap Ring E Type	4	φ9
34	Roller Driver	2	S45C (1045)
35	Base Plate B (R)	1	S45C (1045)
36	Safety Pin	1	SS400(1020)
37	Base Plate B (L)	1	S45C (1045)
38	Positive Return Block	2	Bronze with Graphite
40	Lower Slide Plate B	4	S45C (1045)
41	Stopper Plate	4	SS400 (1020)
43	Locking Plate	2	SS400 (1020)
44	Base Plate C (R)	1	S45C (1045)
45	Base Plate C (L)	1	S45C (1045)
49	Slide Plate	2	Bronze with Graphite
50	Slide Plate	2	Bronze with Graphite

Bolts for assembly are not indicated.

Aerial Cam Unit

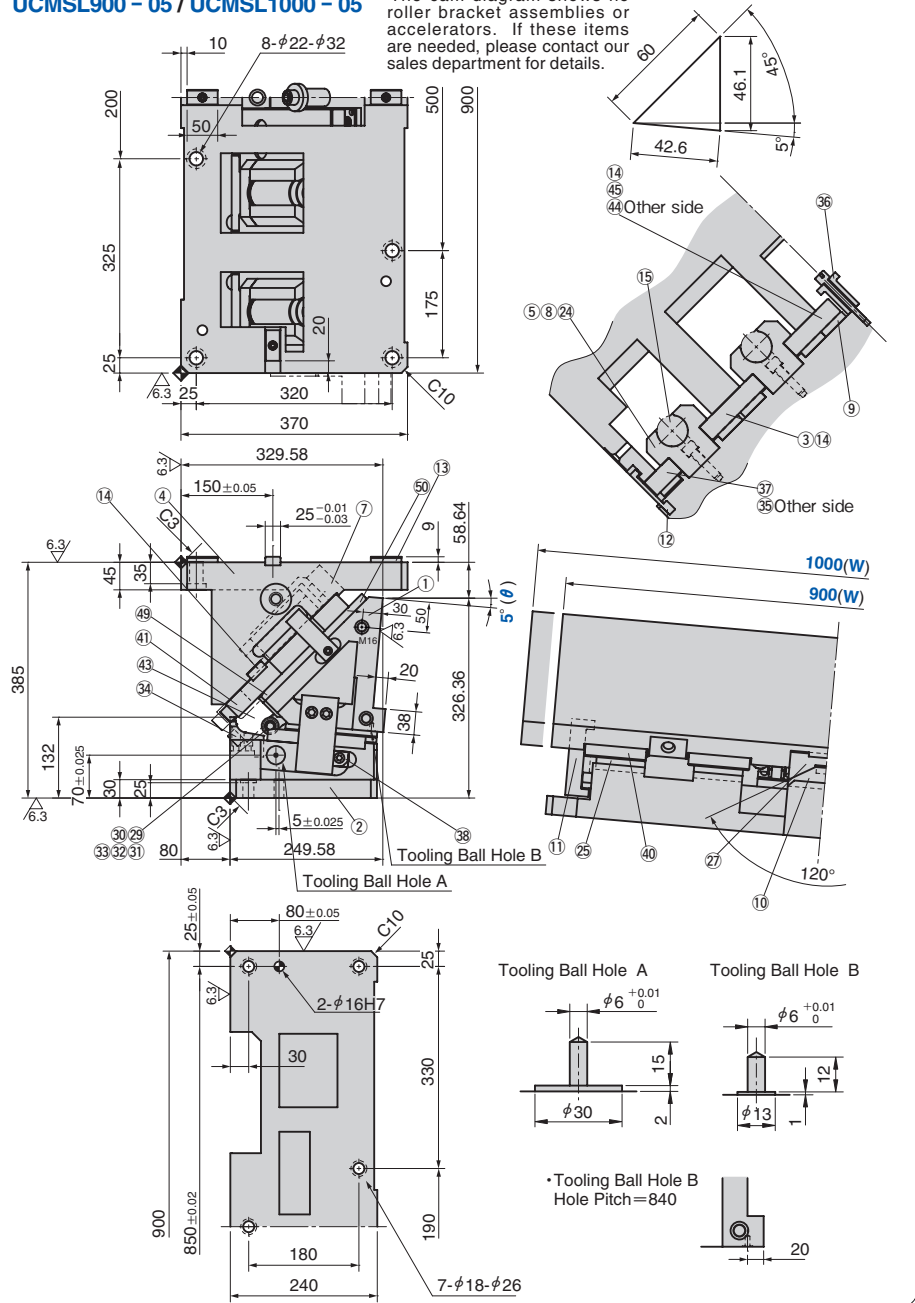
LARGE TYPE FOR PIERCE AND FLANGE



UCMSL900 - 05 / UCMSL1000 - 05

* The cam diagram shows no roller bracket assemblies or accelerators. If these items are needed, please contact our sales department for details.

Cam Diagram



Travel S	Working Force kN(tonf)	Spring Force N(kgf)		Return Force N(kgf)	Catalog No.	W	θ	Spring Type PS
		Initial Load	Final Load					
42.6	627.2 (64.0)	-	37364 (3812.7)	50864 (5190.2)	UCMSL	900 1000	05	GK *NGK GD *NGD GS *NGS

* Parts for spring assembly are included.



Order

Catalog No.	W	θ	PS
UCMSL 900	900	05	GK
UCMSL 1000	1000	05	NGK

.....Without gas spring

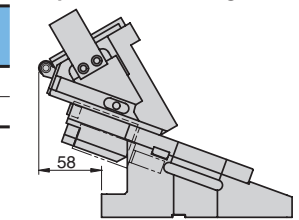
Spring Specification (Qty 4)

No.	PS	Spring Model
	GK	K750-80-TD (KALLER)
15	GD	L.750.075.TO.140 (DADCO)
	GS	SM0750.75 (SDT)

Weight (kg)

W	Slider Weight	Total Weight
900	199.5	459.2
1000	206.4	466.1

Space for removing



Option

Option Code	Specification
NF	Nitrogen gas not changed.



Order

UCMSL900 - 05 - GK - NF

Table of Components

No.	Description	Qty	Material and Remark
1	Cam Slider	1	FC250
2	Cam Driver	1	FC250
3	Base Plate A	2	S45C (1045)
4	Cam Holder	1	FC250
5	Spring Guide Block	4	Bronze with Graphite
7	Guide Pin Block	4	SS400 (1020)
8	Spring Guide Plate	4	SS400 (1020)
9	Slide Lower Plate B	8	Bronze with Graphite
10	Cam Slide Guide	1	Bronze with Graphite
11	Positive Return Follower	2	S45C (1045)
12	Safety Plate	2	S45C (1045)
13	Key A	4	SS400 (1020)
14	Key B	6	SS400 (1020)
15	Gas Spring	4	Refer to the Spring Specification
24	Stopper	8	Urethane PCU20
25	Cam Slide Plate	4	Bronze with Graphite
27	Cam Slide Guide	1	S45C (1045)

No.	Description	Qty	Material and Remark
29	Roller Bracket	2	S45C (1045)
30	Roller	2	S45C (1045)
31	Roller Pin	2	S45C (1045)
32	Bushing	2	Bronze with Graphite (SOB12-18-16)
33	Snap Ring E Type	4	φ9
34	Roller Driver	2	S45C (1045)
35	Base Plate B (R)	1	S45C (1045)
36	Safety Pin	1	SS400(1020)
37	Base Plate B (L)	1	S45C (1045)
38	Positive Return Block	2	Bronze with Graphite
40	Lower Slide Plate B	4	S45C (1045)
41	Stopper Plate	4	SS400 (1020)
43	Locking Plate	2	SS400 (1020)
44	Base Plate C (R)	1	S45C (1045)
45	Base Plate C (L)	1	S45C (1045)
49	Slide Plate	2	Bronze with Graphite
50	Slide Plate	2	Bronze with Graphite



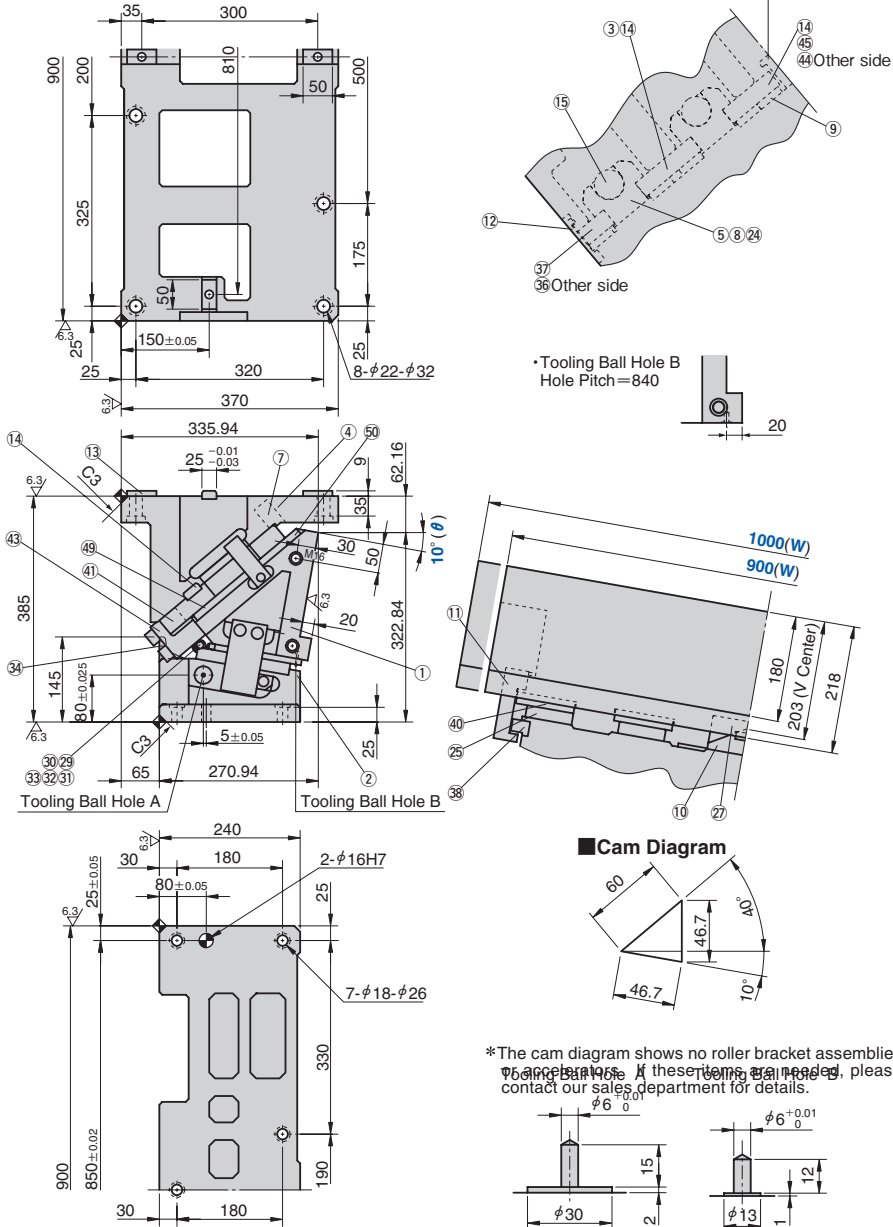
Bolts for assembly are not indicated.

Aerial Cam Unit

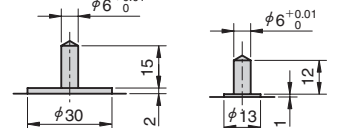
LARGE TYPE FOR PIERCE AND FLANGE



UCMSL900 - 10 / UCMSL1000 - 10



*The cam diagram shows no roller bracket assemblies
 If these items are needed, please
 contact our sales department for details.



Travel S	Working Force kN(tonf)	Spring Force N(kgf)		Return Force N(kgf)	Catalog No.	W	θ	Spring Type PS
		Initial Load	Final Load					
46.7	627.2 (64.0)	-	37364 (3812.7)	50675 (5170.9)	UCMSL	900 1000	10	GK *NGK GD *NGD GS *NGS

*Parts for spring assembly are included.



Order	Catalog No.	W	θ	PS
	UCMSL	900	10	GK
	UCMSL	1000	10	NGK

.....Without gas spring

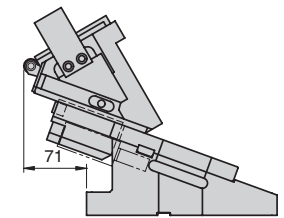
Spring Specification (Qty 4)

No.	PS	Spring Model
	GK	K750-80-TD (KALLER)
15	GD	L.750.075.TO.140 (DADCO)
	GS	SM0750.75 (SDT)

Weight (kg)

W	Slider Weight	Total Weight
900	199.5	457.7
1000	206.4	464.6

Space for removing



Option	Option Code	Specification
	NF	Nitrogen gas not changed.



Order UCMSL900 - 10 - GK - NF

Table of Components

No.	Description	Qty	Material and Remark
1	Cam Slider	1	FC250
2	Cam Driver	1	FC250
3	Base Plate A	2	S45C (1045)
4	Cam Holder	1	FC250
5	Spring Guide Block	4	Bronze with Graphite
7	Guide Pin Block	4	SS400 (1020)
8	Spring Guide Plate	4	SS400 (1020)
9	Slide Lower Plate B	8	Bronze with Graphite
10	Cam Slide Guide	1	Bronze with Graphite
11	Positive Return Follower	2	S45C (1045)
12	Safety Plate	2	S45C (1045)
13	Key A	4	SS400 (1020)
14	Key B	6	SS400 (1020)
15	Gas Spring	4	Refer to the Spring Specification
24	Stopper	8	Urethane PCU20
25	Cam Slide Plate	4	Bronze with Graphite
27	Cam Slide Guide	1	S45C (1045)

No.	Description	Qty	Material and Remark
29	Roller Bracket	2	S45C (1045)
30	Roller	2	S45C (1045)
31	Roller Pin	2	S45C (1045)
32	Bushing	2	Bronze with Graphite (SOB12-18-16)
33	Snap Ring E Type	4	φ9
34	Roller Driver	2	S45C (1045)
35	Base Plate B (R)	1	S45C (1045)
36	Safety Pin	1	SS400(1020)
37	Base Plate B (L)	1	S45C (1045)
38	Positive Return Block	2	Bronze with Graphite
40	Lower Slide Plate B	4	S45C (1045)
41	Stopper Plate	4	SS400 (1020)
43	Locking Plate	2	SS400 (1020)
44	Base Plate C (R)	1	S45C (1045)
45	Base Plate C (L)	1	S45C (1045)
49	Slide Plate	2	Bronze with Graphite
50	Slide Plate	2	Bronze with Graphite



Bolts for assembly are not indicated.

Aerial Cam Unit

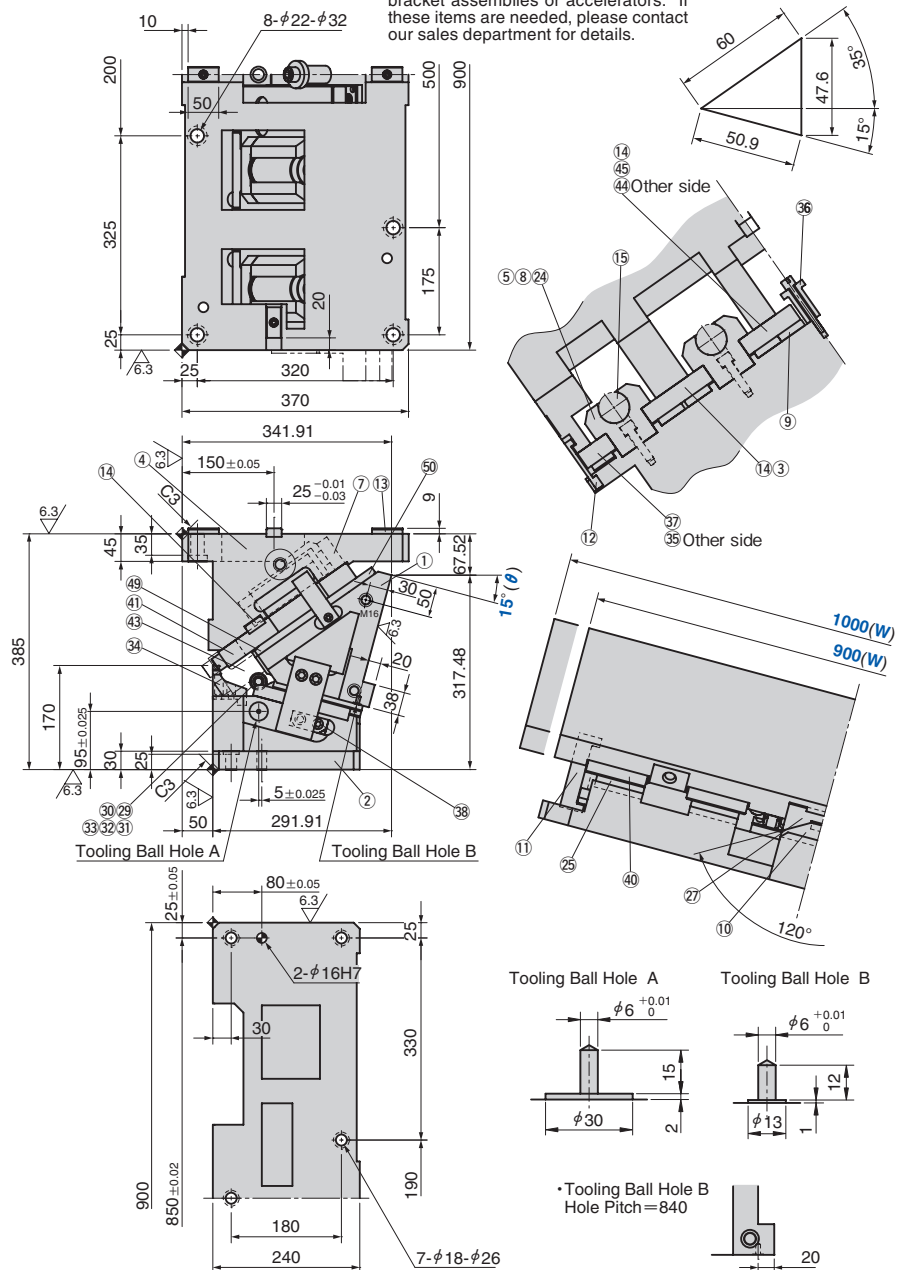
LARGE TYPE FOR PIERCE AND FLANGE



UCMSL900 - 15 / UCMSL1000 - 15

* The cam diagram shows no roller bracket assemblies or accelerators. If these items are needed, please contact our sales department for details.

Cam Diagram



Travel S	Working Force kN(tonf)	Spring Force N(kgf)		Return Force N(kgf)	Catalog No.	W	θ	Spring Type PS
		Initial Load	Final Load					
50.9	627.2 (64.0)	-	37364 (3812.7)	50476 (5150.6)	UCMSL	900 1000	15	GK *NGK GD *NGD GS *NGS

* Parts for spring assembly are included.



Order

Catalog No.	W	θ	PS
UCMSL	900	15	GK
UCMSL	1000	15	NGK

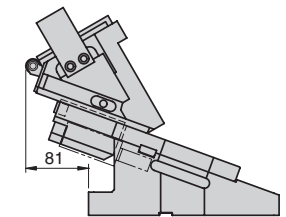
.....Without gas spring

Spring Specification (Qty 4)

Weight (kg)

Space for removing

No.	PS	Spring Model	W	Slider Weight	Total Weight
	GK	K750-80-TD (KALLER)	900	199.5	457.8
15	GD	L.750.075.TO.140 (DADCO)	1000	206.4	464.7
	GS	SM0750.75 (SDT)			



Option

Option Code	Specification
NF	Nitrogen gas not changed.



Order

UCMSL900 - 15 - GK - NF

Table of Components

No.	Description	Qty	Material and Remark
1	Cam Slider	1	FC250
2	Cam Driver	1	FC250
3	Base Plate A	2	S45C (1045)
4	Cam Holder	1	FC250
5	Spring Guide Block	4	Bronze with Graphite
7	Guide Pin Block	4	SS400 (1020)
8	Spring Guide Plate	4	SS400 (1020)
9	Slide Lower Plate B	8	Bronze with Graphite
10	Cam Slide Guide	1	Bronze with Graphite
11	Positive Return Follower	2	S45C (1045)
12	Safety Plate	2	S45C (1045)
13	Key A	4	SS400 (1020)
14	Key B	6	SS400 (1020)
15	Gas Spring	4	Refer to the Spring Specification
24	Stopper	8	Urethane PCU20
25	Cam Slide Plate	4	Bronze with Graphite
27	Cam Slide Guide	1	S45C (1045)

No.	Description	Qty	Material and Remark
29	Roller Bracket	2	S45C (1045)
30	Roller	2	S45C (1045)
31	Roller Pin	2	S45C (1045)
32	Bushing	2	Bronze with Graphite (SOB12-18-16)
33	Snap Ring E Type	4	φ9
34	Roller Driver	2	S45C (1045)
35	Base Plate B (R)	1	S45C (1045)
36	Safety Pin	1	SS400(1020)
37	Base Plate B (L)	1	S45C (1045)
38	Positive Return Block	2	Bronze with Graphite
40	Lower Slide Plate B	4	S45C (1045)
41	Stopper Plate	4	SS400 (1020)
43	Locking Plate	2	SS400 (1020)
44	Base Plate C (R)	1	S45C (1045)
45	Base Plate C (L)	1	S45C (1045)
49	Slide Plate	2	Bronze with Graphite
50	Slide Plate	2	Bronze with Graphite



Bolts for assembly are not indicated.

Aerial Cam Unit

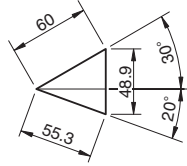
LARGE TYPE FOR PIERCE AND FLANGE



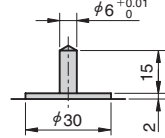
UCMSL900 - 20 / UCMSL1000 - 20

Cam Diagram

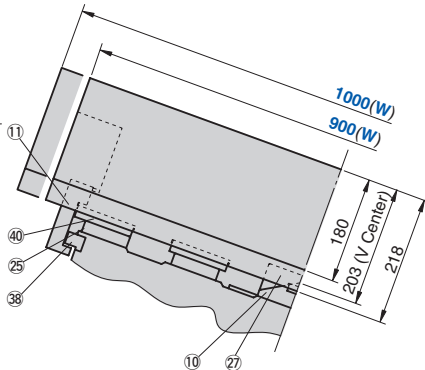
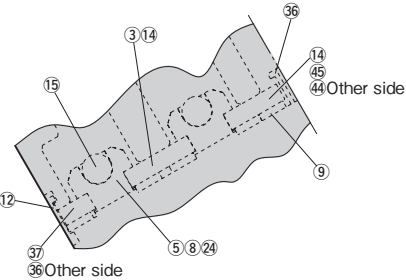
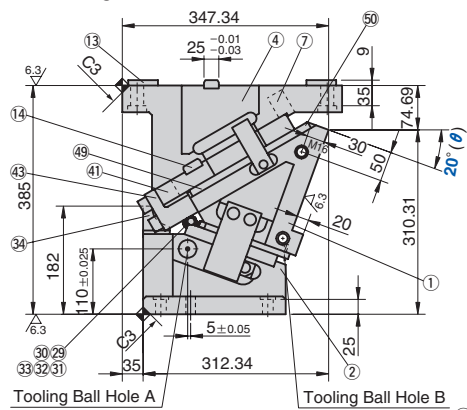
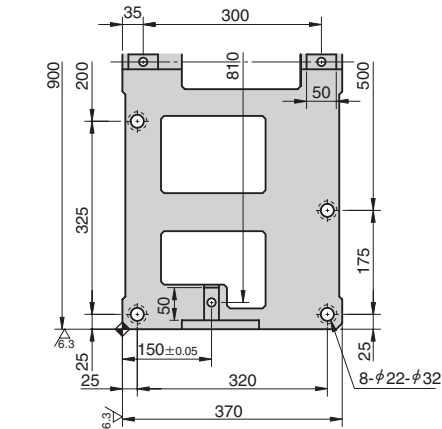
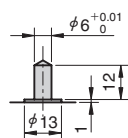
* The cam diagram shows no roller bracket assemblies or accelerators. If these items are needed, please contact our sales department for details.



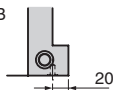
Tooling Ball Hole A



Tooling Ball Hole B



• Tooling Ball Hole B Hole Pitch=840



Travel S	Working Force kN(tonf)	Spring Force N(kgf)		Return Force N(kgf)	Catalog No.	W	θ	Spring Type PS
		Initial Load	Final Load					
55.3	627.2 (64.0)	-	37364 (3812.7)	50268 (5129.4)	UCMSL	900 1000	20	GK *NGK GD *NGD GS *NGS

* Parts for spring assembly are included.



Order

Catalog No.	W	θ	PS
UCMSL	900	20	GK
UCMSL	1000	20	NGK

.....Without gas spring

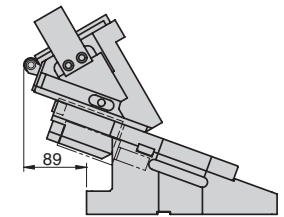
Spring Specification (Qty 4)

No.	PS	Spring Model
	GK	K750-80-TD (KALLER)
15	GD	L.750.075.TO.140 (DADCO)
	GS	SM0750.75 (SDT)

Weight (kg)

W	Slider Weight	Total Weight
900	199.5	459.7
1000	206.4	466.5

Space for removing



Option

Option Code	Specification
NF	Nitrogen gas not changed.



Order

UCMSL900 - 20 - GK - NF

Table of Components

No.	Description	Qty	Material and Remark
1	Cam Slider	1	FC250
2	Cam Driver	1	FC250
3	Base Plate A	2	S45C (1045)
4	Cam Holder	1	FC250
5	Spring Guide Block	4	Bronze with Graphite
7	Guide Pin Block	4	SS400 (1020)
8	Spring Guide Plate	4	SS400 (1020)
9	Slide Lower Plate B	8	Bronze with Graphite
10	Cam Slide Guide	1	Bronze with Graphite
11	Positive Return Follower	2	S45C (1045)
12	Safety Plate	2	S45C (1045)
13	Key A	4	SS400 (1020)
14	Key B	6	SS400 (1020)
15	Gas Spring	4	Refer to the Spring Specification
24	Stopper	8	Urethane PCU20
25	Cam Slide Plate	4	Bronze with Graphite
27	Cam Slide Guide	1	S45C (1045)

No.	Description	Qty	Material and Remark
29	Roller Bracket	2	S45C (1045)
30	Roller	2	S45C (1045)
31	Roller Pin	2	S45C (1045)
32	Bushing	2	Bronze with Graphite (SOB12-18-16)
33	Snap Ring E Type	4	φ9
34	Roller Driver	2	S45C (1045)
35	Base Plate B (R)	1	S45C (1045)
36	Safety Pin	1	SS400(1020)
37	Base Plate B (L)	1	S45C (1045)
38	Positive Return Block	2	Bronze with Graphite
40	Lower Slide Plate B	4	S45C (1045)
41	Stopper Plate	4	SS400 (1020)
43	Locking Plate	2	SS400 (1020)
44	Base Plate C (R)	1	S45C (1045)
45	Base Plate C (L)	1	S45C (1045)
49	Slide Plate	2	Bronze with Graphite
50	Slide Plate	2	Bronze with Graphite



Bolts for assembly are not indicated.

Aerial Cam Unit

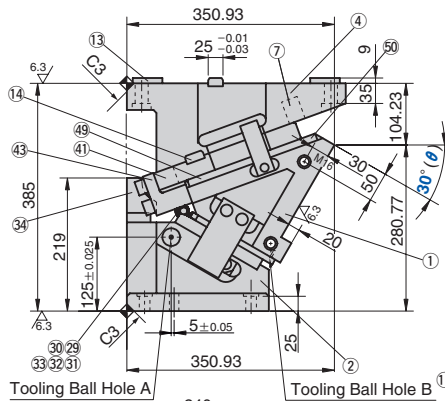
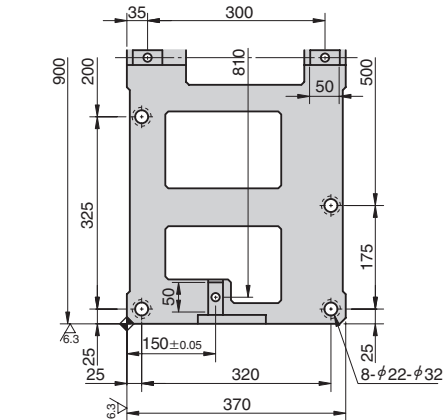
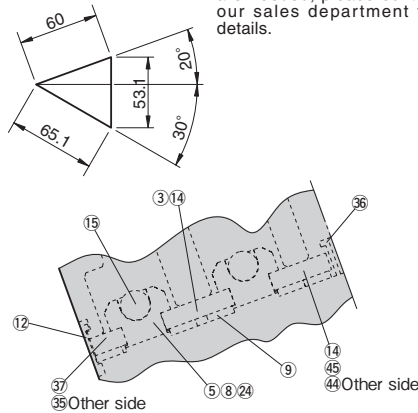
LARGE TYPE FOR PIERCE AND FLANGE



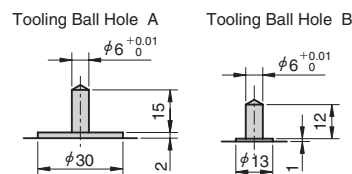
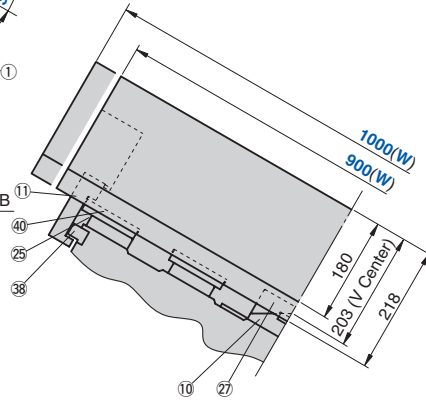
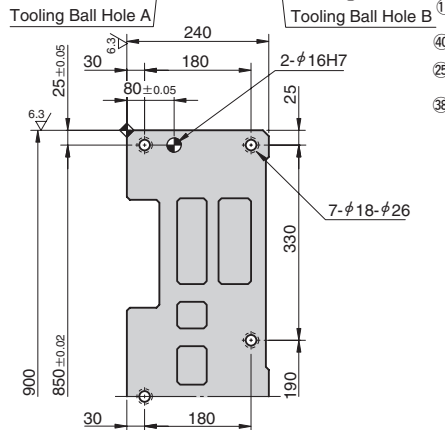
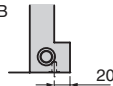
UCMSL900 - 30 / UCMSL1000 - 30

Cam Diagram

* The cam diagram shows no roller bracket assemblies or accelerators. If these items are needed, please contact our sales department for details.



• Tooling Ball Hole B
Hole Pitch=840



Travel S	Working Force kN(tonf)	Spring Force N(kgf)		Return Force N(kgf)	Catalog No.	W	θ	Spring Type PS
		Initial Load	Final Load					
65.1	627.2 (64.0)	-	37364 (3812.7)	49832 (5084.9)	UCMSL	900 1000	30	GK *NGK
								GD *NGD
								GS *NGS

* Parts for spring assembly are included.



Order

Catalog No.	W	θ	PS
UCMSL	900	30	GK
UCMSL	1000	30	NGK

.....Without gas spring

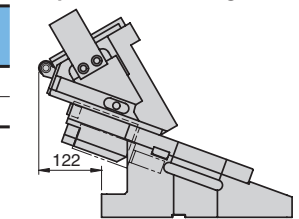
Spring Specification (Qty 4)

No.	PS	Spring Model
	GK	K750-80-TD (KALLER)
15	GD	L.750.075.TO.140 (DADCO)
	GS	SM0750.75 (SDT)

Weight (kg)

W	Slider Weight	Total Weight
900	199.5	467.8
1000	206.4	474.7

Space for removing



Option

Option Code	Specification
NF	Nitrogen gas not changed.



Order

UCMSL900 - 30 - GK - NF

Table of Components

No.	Description	Qty	Material and Remark
1	Cam Slider	1	FC250
2	Cam Driver	1	FC250
3	Base Plate A	2	S45C (1045)
4	Cam Holder	1	FC250
5	Spring Guide Block	4	Bronze with Graphite
7	Guide Pin Block	4	SS400 (1020)
8	Spring Guide Plate	4	SS400 (1020)
9	Slide Lower Plate B	8	Bronze with Graphite
10	Cam Slide Guide	1	Bronze with Graphite
11	Positive Return Follower	2	S45C (1045)
12	Safety Plate	2	S45C (1045)
13	Key A	4	SS400 (1020)
14	Key B	6	SS400 (1020)
15	Gas Spring	4	Refer to the Spring Specification
24	Stopper	8	Urethane PCU20
25	Cam Slide Plate	4	Bronze with Graphite
27	Cam Slide Guide	1	S45C (1045)

No.	Description	Qty	Material and Remark
29	Roller Bracket	2	S45C (1045)
30	Roller	2	S45C (1045)
31	Roller Pin	2	S45C (1045)
32	Bushing	2	Bronze with Graphite (SOB12-18-16)
33	Snap Ring E Type	4	φ9
34	Roller Driver	2	S45C (1045)
35	Base Plate B (R)	1	S45C (1045)
36	Safety Pin	1	SS400(1020)
37	Base Plate B (L)	1	S45C (1045)
38	Positive Return Block	2	Bronze with Graphite
40	Lower Slide Plate B	4	S45C (1045)
41	Stopper Plate	4	SS400 (1020)
43	Locking Plate	2	SS400 (1020)
44	Base Plate C (R)	1	S45C (1045)
45	Base Plate C (L)	1	S45C (1045)
49	Slide Plate	2	Bronze with Graphite
50	Slide Plate	2	Bronze with Graphite



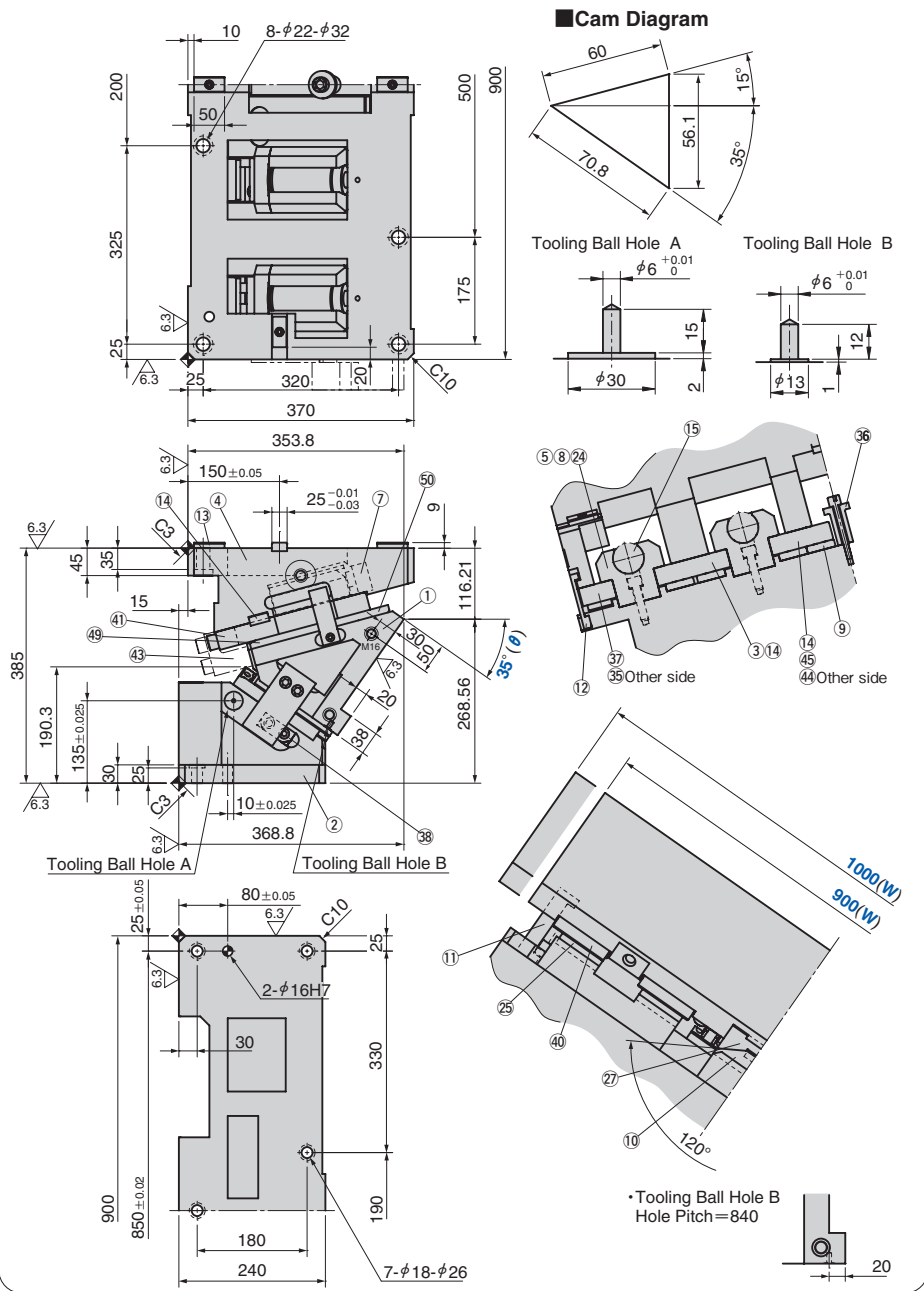
Bolts for assembly are not indicated.

Aerial Cam Unit

LARGE TYPE FOR PIERCE AND FLANGE



UCMSL900 - 35 / UCMSL1000 - 35



Travel S	Working Force kN(tonf)	Spring Force N(kgf)		Return Force N(kgf)	Catalog No.	W	θ	Spring Type PS
		Initial Load	Final Load					
70.8	627.2 (64.0)	-	37364 (3812.7)	49607 (5061.9)	UCMSL	900 1000	35	GK *NGK
								GD *NGD
								GS *NGS

* Parts for spring assembly are included.



Order

Catalog No.	W	θ	PS
UCMSL	900	35	GK
UCMSL	1000	35	NGK

.....Without gas spring

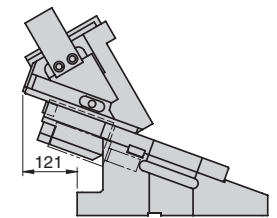
Spring Specification (Qty 4)

No.	PS	Spring Model
	GK	K750-80-TD (KALLER)
15	GD	L.750.075.TO.140 (DADCO)
	GS	SM0750.75 (SDT)

Weight (kg)

W	Slider Weight	Total Weight
900	199.5	478.9
1000	206.4	485.8

Space for removing



Option

Option Code	Specification
NF	Nitrogen gas not changed.



Order

UCMSL900 - 35 - GK - NF

Table of Components

No.	Description	Qty	Material and Remark
1	Cam Slider	1	FC250
2	Cam Driver	1	FC250
3	Base Plate A	2	S45C (1045)
4	Cam Holder	1	FC250
5	Spring Guide Block	4	Bronze with Graphite
7	Guide Pin Block	4	SS400 (1020)
8	Spring Guide Plate	4	SS400 (1020)
9	Slide Lower Plate B	8	Bronze with Graphite
10	Cam Slide Guide	1	Bronze with Graphite
11	Positive Return Follower	2	S45C (1045)
12	Safety Plate	2	S45C (1045)
13	Key A	4	SS400 (1020)
14	Key B	6	SS400 (1020)
15	Gas Spring	4	Refer to the Spring Specification
24	Stopper	8	Urethane PCU20
25	Cam Slide Plate	4	Bronze with Graphite
27	Cam Slide Guide	1	S45C (1045)

No.	Description	Qty	Material and Remark
35	Base Plate B (R)	1	S45C (1045)
36	Safety Pin	1	SS400(1020)
37	Base Plate B (L)	1	S45C (1045)
38	Positive Return Block	2	Bronze with Graphite
40	Lower Slide Plate B	4	S45C (1045)
41	Stopper Plate	4	SS400 (1020)
43	Locking Plate	2	SS400 (1020)
44	Base Plate C (R)	1	S45C (1045)
45	Base Plate C (L)	1	S45C (1045)
49	Slide Plate	2	Bronze with Graphite
50	Slide Plate	2	Bronze with Graphite



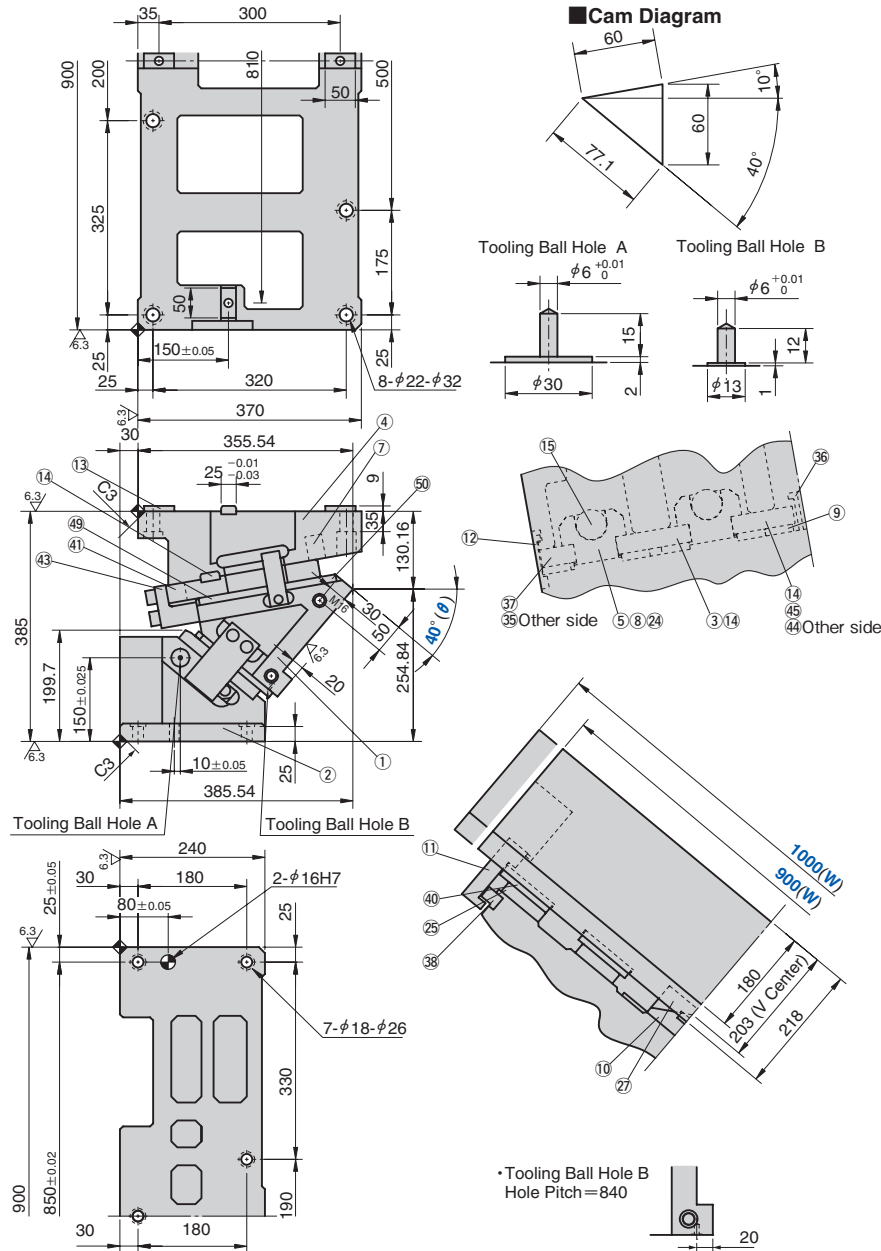
Bolts for assembly are not indicated.

Aerial Cam Unit

LARGE TYPE FOR PIERCE AND FLANGE



UCMSL900 - 40 / UCMSL1000 - 40



Travel S	Working Force kN(tonf)	Spring Force N(kgf)		Return Force N(kgf)	Catalog No.	W	θ	Spring Type PS
		Initial Load	Final Load					
77.1	627.2 (64.0)	-	37364 (3812.7)	49380 (5038.7)	UCMSL	900 1000	40	GK *NGK
								GD *NGD
								GS *NGS

* Parts for spring assembly are included.



Order

Catalog No.	W	θ	PS
UCMSL	900	40	GK
UCMSL	1000	40	NGK

.....Without gas spring

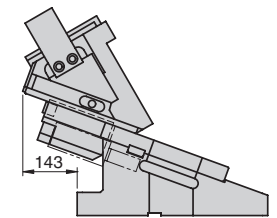
Spring Specification (Qty 4)

No.	PS	Spring Model
	GK	K750-80-TD (KALLER)
⑮	GD	L.750.075.TO.140 (DADCO)
	GS	SM0750.75 (SDT)

Weight (kg)

W	Slider Weight	Total Weight
900	199.5	487.3
1000	206.4	494.2

Space for removing



Option

Option Code	Specification
NF	Nitrogen gas not changed.



Order

UCMSL900 - 40 - GK - NF

Table of Components

No.	Description	Qty	Material and Remark
①	Cam Slider	1	FC250
②	Cam Driver	1	FC250
③	Base Plate A	2	S45C (1045)
④	Cam Holder	1	FC250
⑤	Spring Guide Block	4	Bronze with Graphite
⑦	Guide Pin Block	4	SS400 (1020)
⑧	Spring Guide Plate	4	SS400 (1020)
⑨	Slide Lower Plate B	8	Bronze with Graphite
⑩	Cam Slide Guide	1	Bronze with Graphite
⑪	Positive Return Follower	2	S45C (1045)
⑫	Safety Plate	2	S45C (1045)
⑬	Key A	4	SS400 (1020)
⑭	Key B	6	SS400 (1020)
⑮	Gas Spring	4	Refer to the Spring Specification
⑳	Stopper	8	Urethane PCU20
㉑	Cam Slide Plate	4	Bronze with Graphite
㉒	Cam Slide Guide	1	S45C (1045)

No.	Description	Qty	Material and Remark
㉓	Base Plate B (R)	1	S45C (1045)
㉔	Safety Pin	1	SS400(1020)
㉕	Base Plate B (L)	1	S45C (1045)
㉖	Positive Return Block	2	Bronze with Graphite
㉗	Lower Slide Plate B	4	S45C (1045)
㉘	Stopper Plate	4	SS400 (1020)
㉙	Locking Plate	2	SS400 (1020)
㉚	Base Plate C (R)	1	S45C (1045)
㉛	Base Plate C (L)	1	S45C (1045)
㉜	Slide Plate	2	Bronze with Graphite
㉝	Slide Plate	2	Bronze with Graphite



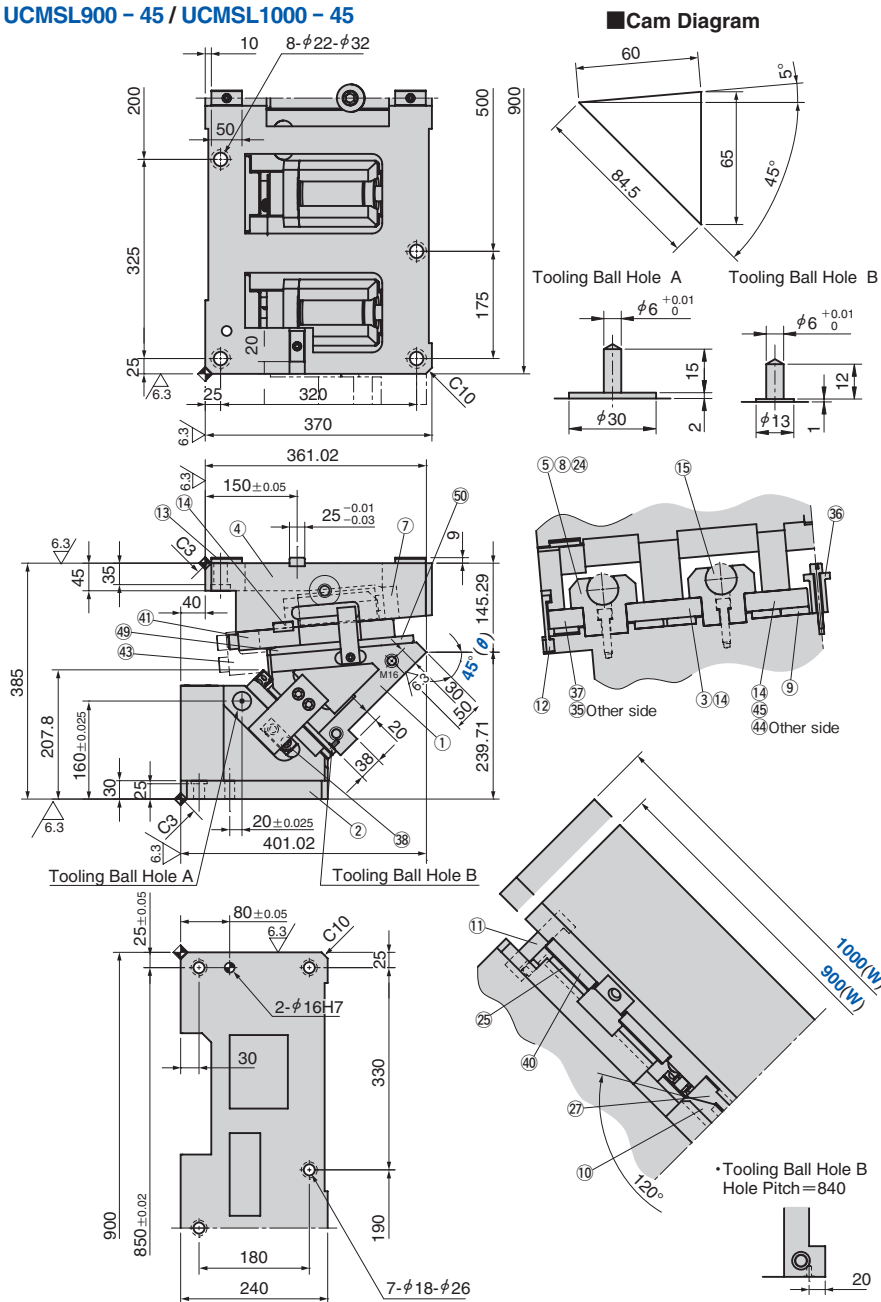
Bolts for assembly are not indicated.

Aerial Cam Unit

LARGE TYPE FOR PIERCE AND FLANGE



UCMSL900 - 45 / UCMSL1000 - 45



Travel S	Working Force kN(tonf)	Spring Force N(kgf)		Return Force N(kgf)	Catalog No.	W	θ	Spring Type PS
		Initial Load	Final Load					
84.5	627.2 (64.0)	-	37364 (3812.7)	49152 (5015.5)	UCMSL	900 1000	45	GK *NGK GD *NGD GS *NGS

* Parts for spring assembly are included.



Order	Catalog No.	W	θ	PS
	UCMSL	900	45	GK
	UCMSL	1000	45	NGK

.....Without gas spring

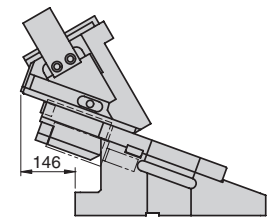
Spring Specification (Qty 4)

No.	PS	Spring Model
	GK	K750-80-TD (KALLER)
15	GD	L.750.075.TO.140 (DADCO)
	GS	SM0750.75 (SDT)

Weight (kg)

W	Slider Weight	Total Weight
900	199.5	499.4
1000	206.4	506.3

Space for removing



Option	Option Code	Specification
	NF	Nitrogen gas not changed.



Order UCMSL900 - 45 - GK - NF

Table of Components

No.	Description	Qty	Material and Remark
1	Cam Slider	1	FC250
2	Cam Driver	1	FC250
3	Base Plate A	2	S45C (1045)
4	Cam Holder	1	FC250
5	Spring Guide Block	4	Bronze with Graphite
7	Guide Pin Block	4	SS400 (1020)
8	Spring Guide Plate	4	SS400 (1020)
9	Slide Lower Plate B	8	Bronze with Graphite
10	Cam Slide Guide	1	Bronze with Graphite
11	Positive Return Follower	2	S45C (1045)
12	Safety Plate	2	S45C (1045)
13	Key A	4	SS400 (1020)
14	Key B	6	SS400 (1020)
15	Gas Spring	4	Refer to the Spring Specification
24	Stopper	8	Urethane PCU20
25	Cam Slide Plate	4	Bronze with Graphite
27	Cam Slide Guide	1	S45C (1045)

No.	Description	Qty	Material and Remark
35	Base Plate B (R)	1	S45C (1045)
36	Safety Pin	1	SS400(1020)
37	Base Plate B (L)	1	S45C (1045)
38	Positive Return Block	2	Bronze with Graphite
40	Lower Slide Plate B	4	S45C (1045)
41	Stopper Plate	4	SS400 (1020)
43	Locking Plate	2	SS400 (1020)
44	Base Plate C (R)	1	S45C (1045)
45	Base Plate C (L)	1	S45C (1045)
49	Slide Plate	2	Bronze with Graphite
50	Slide Plate	2	Bronze with Graphite

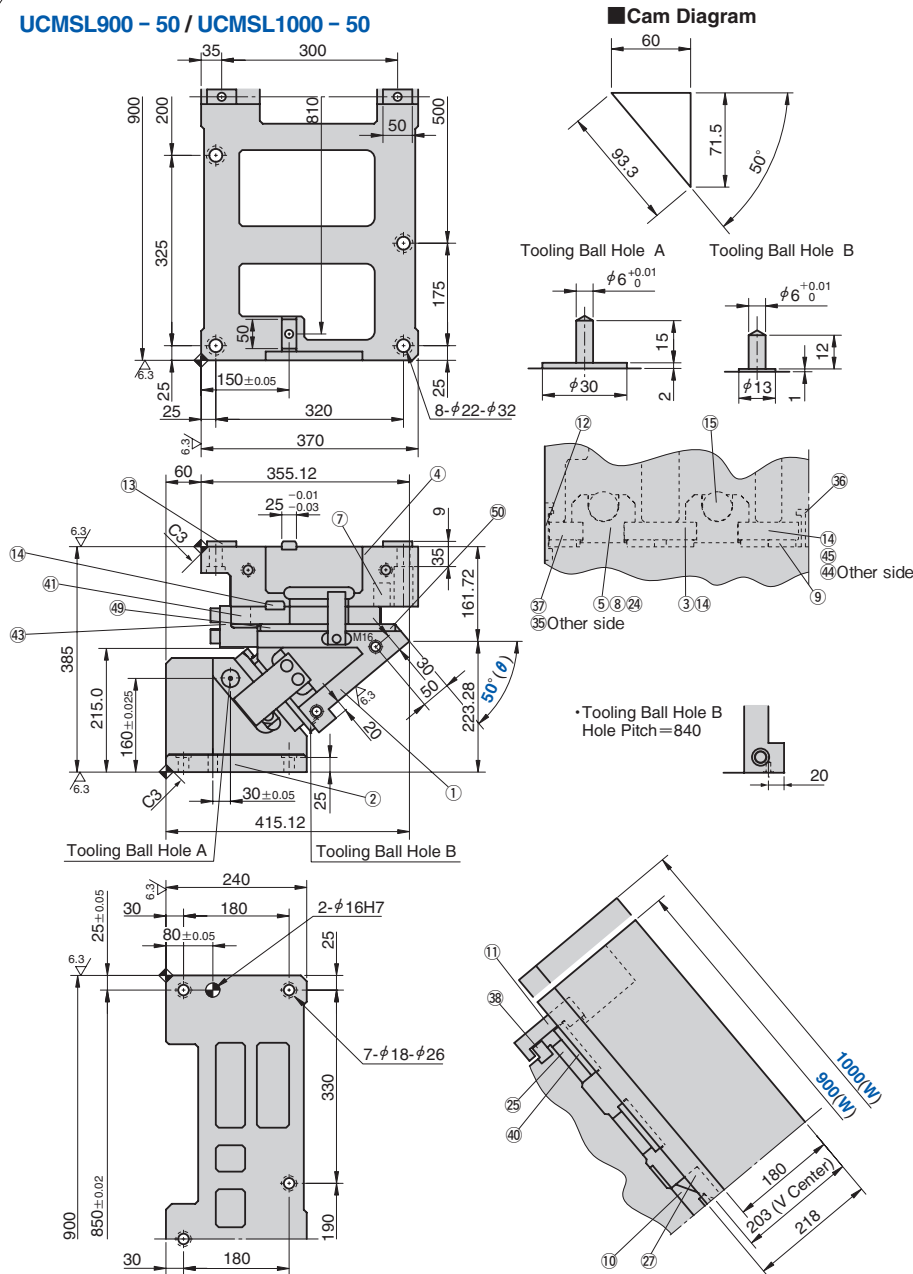
Bolts for assembly are not indicated.

Aerial Cam Unit

LARGE TYPE FOR PIERCE AND FLANGE



UCMSL900 - 50 / UCMSL1000 - 50



Travel S	Working Force kN(tonf)	Spring Force N(kgf)		Return Force N(kgf)	Catalog No.	W	θ	Spring Type PS
		Initial Load	Final Load					
93.3	627.2 (64.0)	-	37364 (3812.7)	48926 (4992.4)	UCMSL	900 1000	50	GK *NGK
								GD *NGD
								GS *NGS

* Parts for spring assembly are included.



Order

Catalog No.	W	θ	PS
UCMSL	900	50	GK
UCMSL	1000	50	NGK

.....Without gas spring

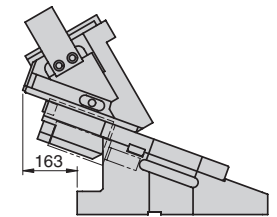
Spring Specification (Qty 4)

No.	PS	Spring Model
	GK	K750-80-TD (KALLER)
15	GD	L.750.075.TO.140 (DADCO)
	GS	SM0750.75 (SDT)

Weight (kg)

No.	PS	Spring Model	W	Slider Weight	Total Weight
	GK	K750-80-TD (KALLER)	900	199.5	498.4
15	GD	L.750.075.TO.140 (DADCO)	1000	206.4	505.3
	GS	SM0750.75 (SDT)			

Space for removing



Option

Option Code	Specification
NF	Nitrogen gas not changed.



Order

UCMSL900 - 50 - GK - NF

Table of Components

No.	Description	Qty	Material and Remark
1	Cam Slider	1	FC250
2	Cam Driver	1	FC250
3	Base Plate A	2	S45C (1045)
4	Cam Holder	1	FC250
5	Spring Guide Block	4	Bronze with Graphite
7	Guide Pin Block	4	SS400 (1020)
8	Spring Guide Plate	4	SS400 (1020)
9	Slide Lower Plate B	8	Bronze with Graphite
10	Cam Slide Guide	1	Bronze with Graphite
11	Positive Return Follower	2	S45C (1045)
12	Safety Plate	2	S45C (1045)
13	Key A	4	SS400 (1020)
14	Key B	6	SS400 (1020)
15	Gas Spring	4	Refer to the Spring Specification

No.	Description	Qty	Material and Remark
24	Stopper	8	Urethane PCU20
25	Cam Slide Plate	4	Bronze with Graphite
27	Cam Slide Guide	1	S45C (1045)
35	Base Plate B (R)	1	S45C (1045)
36	Safety Pin	1	SS400(1020)
37	Base Plate B (L)	1	S45C (1045)
38	Positive Return Block	2	Bronze with Graphite
40	Lower Slide Plate B	4	S45C (1045)
41	Stopper Plate	4	SS400 (1020)
43	Locking Plate	2	SS400 (1020)
44	Base Plate C (R)	1	S45C (1045)
45	Base Plate C (L)	1	S45C (1045)
49	Slide Plate	2	Bronze with Graphite
50	Slide Plate	2	Bronze with Graphite



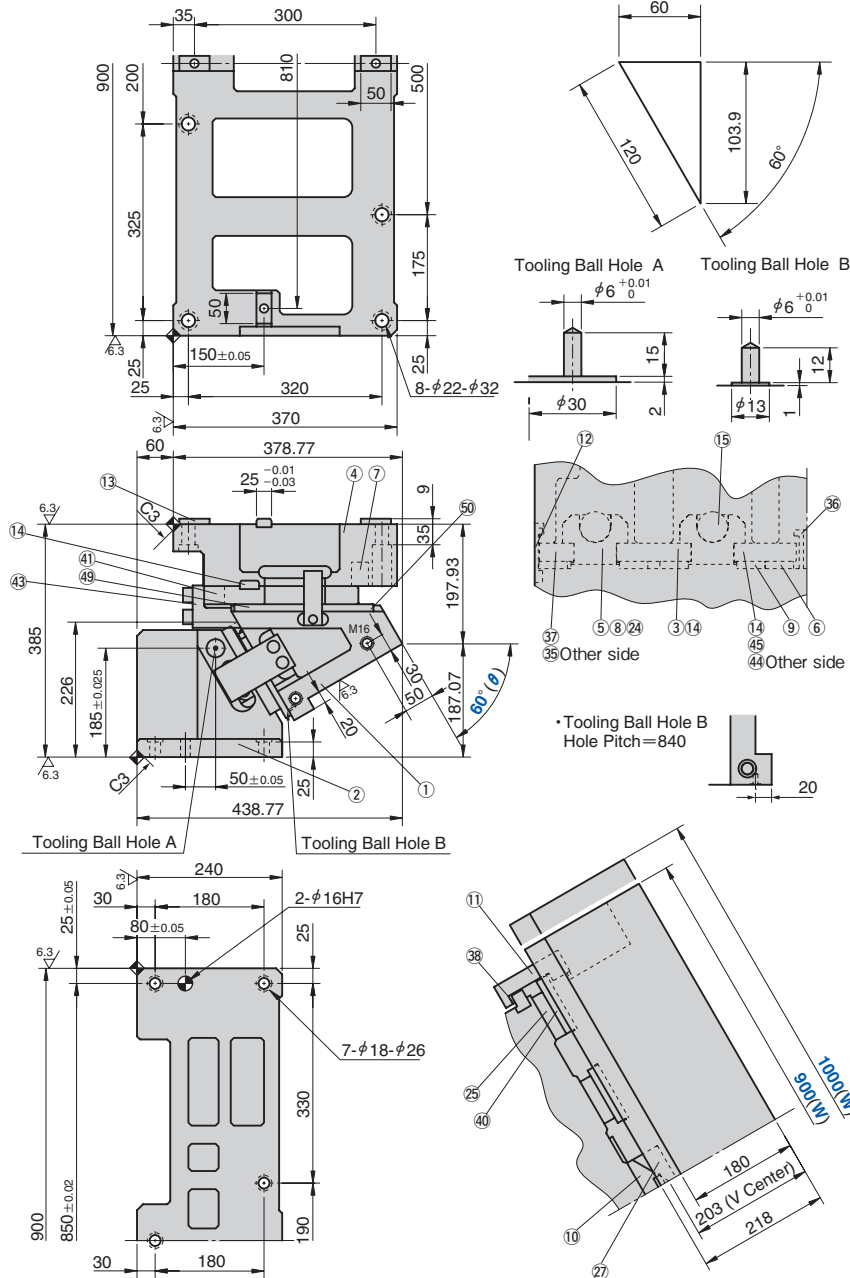
Bolts for assembly are not indicated.

Aerial Cam Unit

LARGE TYPE FOR PIERCE AND FLANGE



UCMSL900 - 60 / UCMSL1000 - 60



Travel S	Working Force kN(tonf)	Spring Force N(kgf)		Return Force N(kgf)	Catalog No.	W	θ	Spring Type PS
		Initial Load	Final Load					
120.0	627.2 (64.0)	-	37364 (3812.7)	58804 (6000.4)	UCMSL	900 1000	60	GK *NGK
								GD *NGD
								GS *NGS

* Parts for spring assembly are included.



Order

Catalog No.	W	θ	PS
UCMSL	900	60	GK
UCMSL	1000	60	NGK

.....Without gas spring

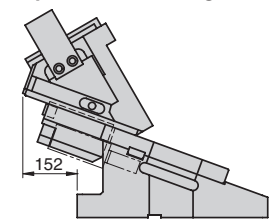
Spring Specification (Qty 4)

No.	PS	Spring Model
	GK	K750-80-TD (KALLER)
⑮	GD	L.750.075.TO.140 (DADCO)
	GS	SM0750.75 (SDT)

Weight (kg)

W	Slider Weight	Total Weight
900	219.7	535.2
1000	227.5	543.1

Space for removing



Option

Option Code	Specification
NF	Nitrogen gas not changed.



Order

UCMSL900 - 60 - GK - NF

Table of Components

No.	Description	Qty	Material and Remark
①	Cam Slider	1	FC250
②	Cam Driver	1	FC250
③	Base Plate A	2	S45C (1045)
④	Cam Holder	1	FC250
⑤	Spring Guide Block	4	Bronze with Graphite
⑥	Slide Lower Plate A	2	Bronze with Graphite
⑦	Guide Pin Block	4	SS400 (1020)
⑧	Spring Guide Plate	4	SS400 (1020)
⑨	Slide Lower Plate B	6	Bronze with Graphite
⑩	Cam Slide Guide	1	Bronze with Graphite
⑪	Positive Return Follower	2	S45C (1045)
⑫	Safety Plate	2	S45C (1045)
⑬	Key A	4	SS400 (1020)
⑭	Key B	6	SS400 (1020)
⑮	Gas Spring	4	Refer to the Spring Specification

No.	Description	Qty	Material and Remark
⑭	Stopper	8	Urethane PCU20
⑮	Cam Slide Plate	4	Bronze with Graphite
⑯	Cam Slide Guide	1	S45C (1045)
⑰	Base Plate B (R)	1	S45C (1045)
⑱	Safety Pin	1	SS400(1020)
⑲	Base Plate B (L)	1	S45C (1045)
⑳	Positive Return Block	2	Bronze with Graphite
㉑	Lower Slide Plate B	4	S45C (1045)
㉒	Stopper Plate	4	SS400 (1020)
㉓	Locking Plate	2	SS400 (1020)
㉔	Base Plate C (R)	1	S45C (1045)
㉕	Base Plate C (L)	1	S45C (1045)
㉖	Slide Plate	2	Bronze with Graphite
㉗	Slide Plate	2	Bronze with Graphite



Bolts for assembly are not indicated.