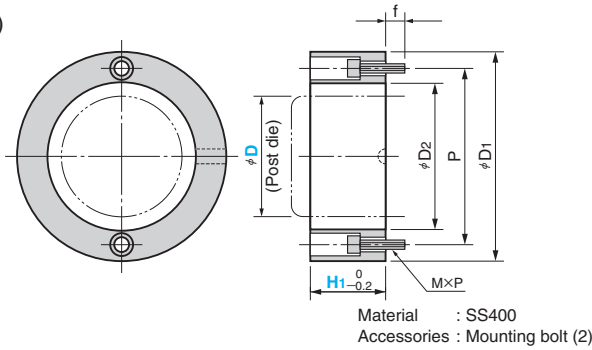


Height Block · Stop Block

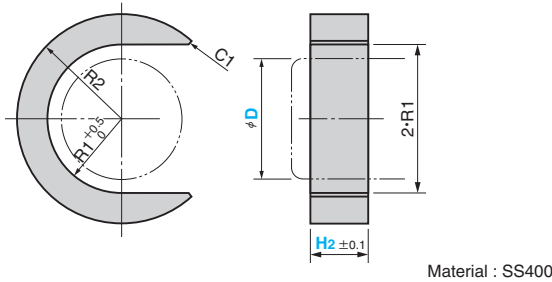
FLAT TYPE

CAD FILE

HBH · HBHL (for Plain Oilless)



SBH (for Plain Oilless)



D	D1	D2	P	MXP	f	R1
		H				H
25	46	29	37	M4×0.7	10	14.5
32	56	37	45			18.5
38	72	43	60	M5×0.8		21.5
50	86	56	72	M6×1.0		28
60	112	66	92	M8×1.25	12	33
80	140	88	116			44

Catalog No.	D	H1 Increments of 5 mm	Safety color	Catalog No.	D	H2 Increments of 5 mm	Safety color
HBH	25	10~50	R (Red) Y (Yellow) N (None)	SBH	25	10~40	R (Red) Y (Yellow) N (None)
	32	10~50			32	10~40	
	38	15~50			38	10~50	
	50	20~50			50	10~50	
	60	20~50			60	10~50	
	80	20~50		80	10~50		

Catalog No.	D	H1 Increments of 1 mm	Safety color
	25	11~49	
	32	11~49	R (Red)
HBHL	38	16~49	Y (Yellow)
	50	21~49	N (None)
	60	21~49	
	80	21~49	

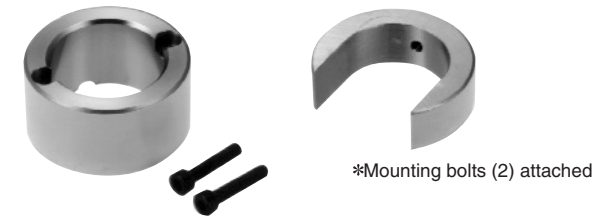
⚠ To determine H1 size, sizes that can be specified in HBH are excluded.

Order	Catalog No.	D	H1 or H2	Safety color
	HBH	38	25	R
	HBHL	38	16	N
	SBH	38	15	Y

Option See page 89 for groove machining and chain installation machining.

Height Block Set

HBHS (for Plain Oilless, HBH + SBH)



Catalog No.	D	H1 Increments of 5 mm	H1 Safety color	H2 Increments of 5 mm	H2 Safety color
	25	1~5	R (Red) Y (Yellow) N (None)	10~40	R (Red) Y (Yellow) N (None)
	32	1~5		10~40	
HBHS	38	1~5		10~50	
	50	2~5		10~50	
	60	2~5		10~50	
	80	2~5	10~50		

Order	Catalog No.	D	H1	H1 Safety color	H2	H2 Safety color
	HBHS	50	30	R	20	Y

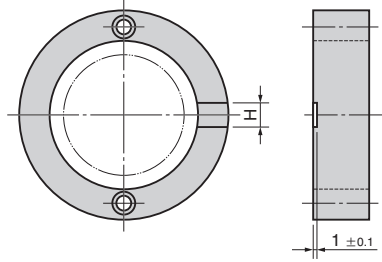
Option See page 89 for groove machining and chain installation machining.

Options

ALTERNATIVE METHODS

■ Groove Machining

-TN (Applicable to HBH and HBHS)



D	H
25~32	10
38~80	15

- TN

A groove to check the dead bottom center is machined.

Order	Catalog No.	D	-	H1	Safety color	-	Option code
	HBF	50	-	35	Y	-	TN

■ Machining for Standard Chain Installation

-S (Applicable to HBHS)

HBHS



*Mounting bolts (2) attached

- S

A height block is connected to a stock with a chain.

Order	Catalog No.	D	-	H1	Safety color	-	H2	Safety color	-	Option code
	HBHS	38	-	25	R	-	20	Y	-	S

■ Machining for Installation of Heavy-Duty Chain

-HS (Applicable to HBHS and SBH)



⚠ Dimension H1, H2 shall be applied to 20mm over.

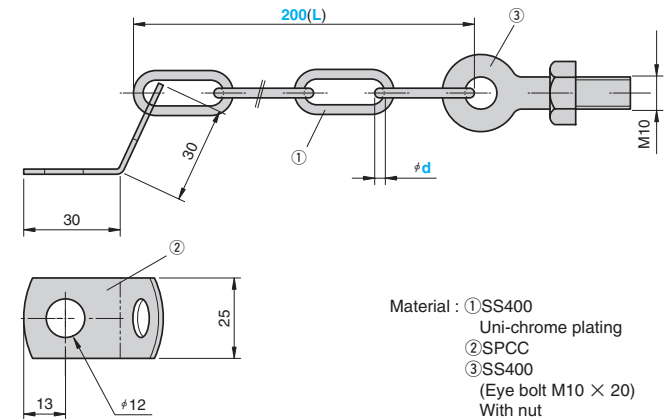
- HS

A height block is connected to a stock with a strong chain.

Order	Catalog No.	D	-	H1	Safety color	-	H2	Safety color	-	Option code
	HBHS	38	-	25	R	-	20	Y	-	HS

■ Heavy-Duty Chain

HCHN



Material : ①SS400
Uni-chrome plating
②SPCC
③SS400
(Eye bolt M10 × 20)
With nut

Catalog No.	d	L
HCHN	3	200

Order	Catalog No.	d	-	L
	HCHN	3	-	200