

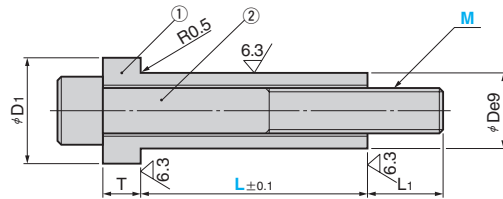
Spool Retainer / Bushing Extender for spool retainer

FOR PAD RETENTION

Addition

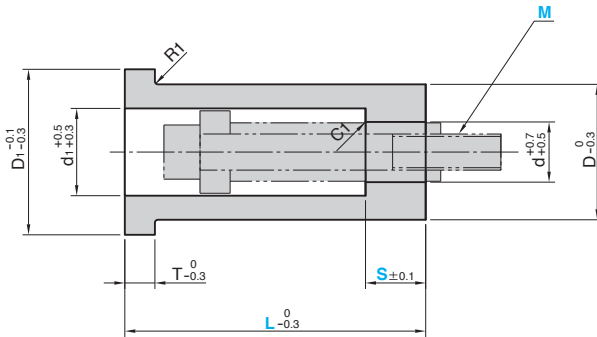
CAD
FILE

SPRF・SPRFM
(Flange Type)



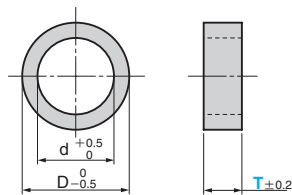
No.	Material	Hardness	Surface Treatment
①	S45C	HRC25 to 30	Black oxide
②	SCM435	to M20 : HRC38 to 43 M24 to : HRC32 to 37	

SPRFT



Material : SS400

SPRU
Sound absorbing urethane



Material : Polyester type
Hardness : ShoreA90

■SPRF/SPRFM

D	D ₁	T	L ₁	Mate Hole Dim. (Tolerance $\begin{smallmatrix} +0.7 \\ -0.5 \end{smallmatrix}$ ref.)	Allowable Load N (kgf)		Catalog No.	M	L
					Impact and Repeated Load Safety Factor 40	Static Load Safety Factor 5			
13	18	5	15	13	841 (86)	6732 (686)	SPRF	8	20~90 (5mm increments) 100~120 (10mm increments)
16	24	8	22	16	1336 (136)	10690 (1090)		10	30~90 (5mm increments) 100~150 (10mm increments)
20	28	10	20	20	1945 (198)	15561 (1587)		12	40~90 (5mm increments) 100~170 (10mm increments)
25	36	13	27	25	3646 (372)	29164 (2974)	SPRFM	16	50~90 (5mm increments) 100~180 (10mm increments)
32	45	16	34	32	5696 (581)	45570 (4647)		20	60~90 (5mm increments) 100~180 (10mm increments)

■SPRFT

D ₁	d ₁	T	D	d	Spool Retainer		Catalog No.	M	L	S
					Catalog No.	M				
55	29	10	45	20	SPRF	12	SPRFT	12	50~120	10~25
60	37	13	50	25	SPRM	16		16	60~150	10~30
70	46	16	60	32		20		20		



Order

Catalog No.	M	L	S
SPRF	12	90	
SPRFT	16	120	20

■SPRU sound absorbing urethane

Spool Retainer		D	d	Catalog No.	M	T
Catalog No.	M					
SPRF	10	24	16	SPRU	10	5・10
	12	28	20		12	
SPRFM	16	36	25	SPRU	16	10・15
	20	45	32		20	

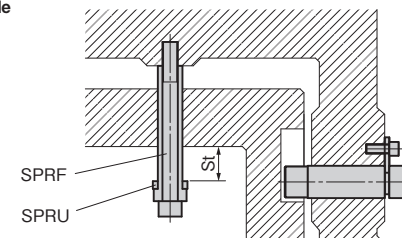


Order

Catalog No.	M	T
SPRU	16	10



Example



Rough guideline St = pad stroke - 1~2 mm

Bushing Extender
Use when sufficient height is required
between holder and pad.

