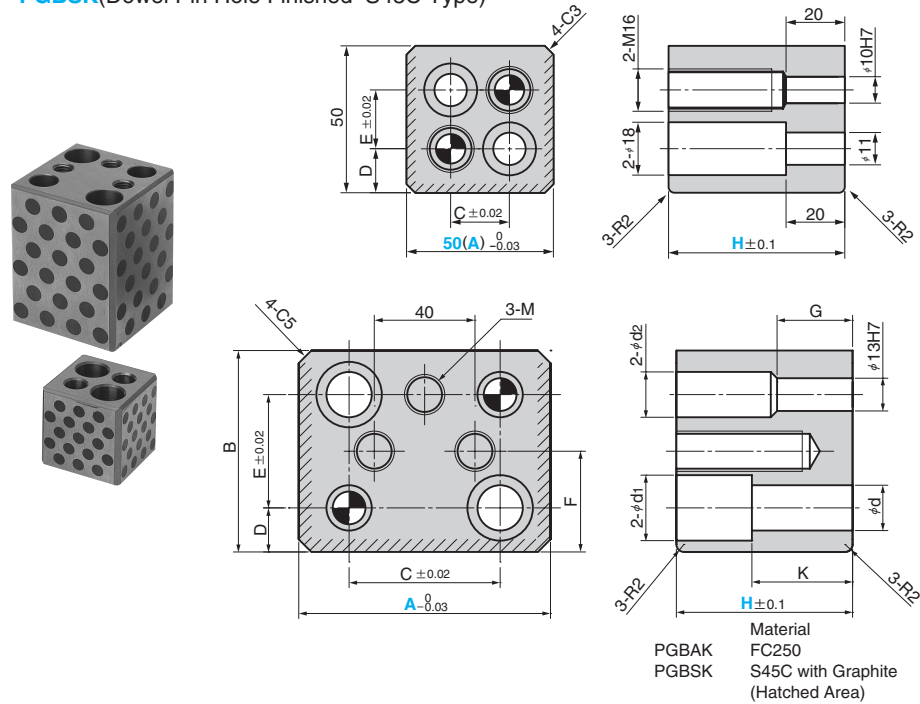


Pad Guide Block

CENTER GUIDE TYPE WITH KEEPER PLATE

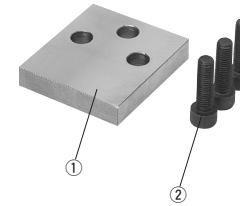
Addition **CAD FILE**

PGBAK(Dowel Pin Hole Finished•FC Type)
PGBSK(Dowel Pin Hole Finished•S45C Type)

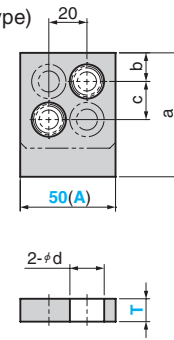


■ Keeper Plate Type

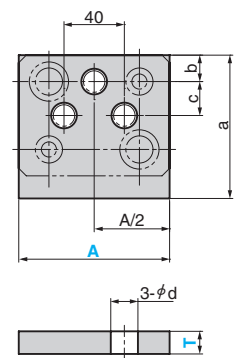
KPLT
(Single-Surface Type)



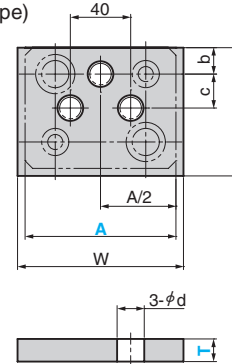
for A=50



for A=70,100



KPLTT
(Three-Surface Type)



Material ①S45C
②SCM435

B	C	D	E	F	G	K	d	d ₁	d ₂	M	Catalog No.	A	H
50	20	15	20	-	-	-	-	-	-	-	PGBAK (FC Type)	50	50 60 90
70	40	15	40	35	25	30	13	20	16	M12		70	70 90
80	60	17.5	45	40	30	40	18	26	16	M16		100	90
50	20	15	20	-	-	-	-	-	-	-	PGBSK (Steel Type)	50	50 60 70 90
70	40	15	40	35	25	30	13	20	16	M12		70	70 90
80	60	17.5	45	40	30	40	18	26	16	M16		100	90 130*

d	②Attached bolt	a	b	c	Catalog No.	A	T
18	M16×40	65	15	20	KPLT	50	12
13	M12×40	85	15	20		70	15
17	M16×50	95	17.5	22.5		100	

d	②Attached bolt	W	a	b	c	Catalog No.	A	T
13	M12×40	80	75	15	20	KPLTT	70	15
18	M16×50	110	85	17.5	22.5		100	

Order **Catalog No.** **A** - **H** *H=130 is PGBSK only.

PGBAK	50	-	60
PGBSK	100	-	90

Option

Option Code	Specification
HB	Replace to Hex. Head bolt from Hex.Socket Head cap screw (②).
KP	Keeper plate (KPLT) and Hex. Socket cap screw are attached.
TKP	Keeper plate (KPLTT) and Hex. Socket cap screw are attached.

Order **PGBSK** 100 - 90 - **TKP**
PGBAK 50 - 60 - **KP** - **HB**

Order **Catalog No.** **A** - **T**

KPLT	70	-	15
-------------	----	---	----



Example

