

Wear Plate

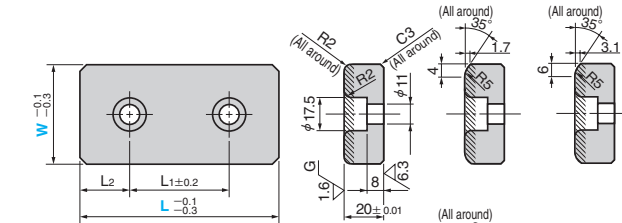
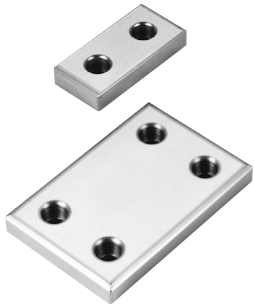
Thickness 20 mm

WEAR PLATE

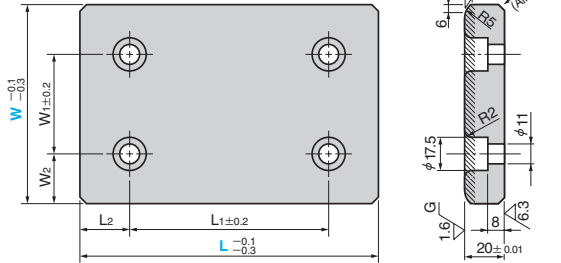
CAD FILE

SOX (Sintered and Standard Type)

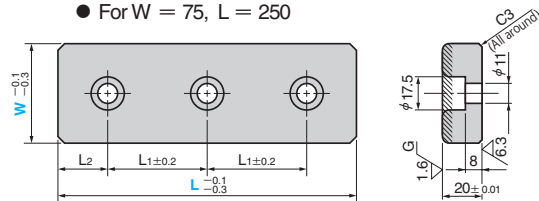
● W = 28 to 75 ● W=28 ● W=38 · 48 · 58 ● W=75



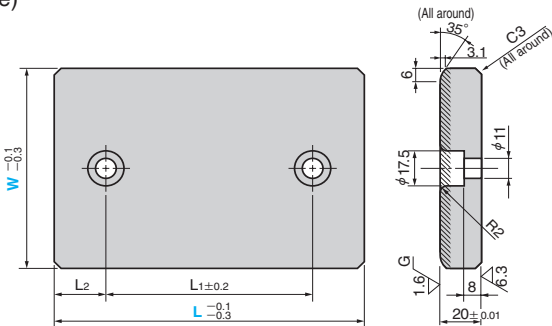
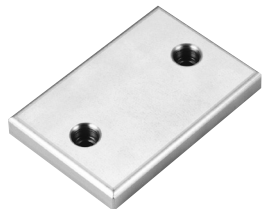
● W = 100 or more



● For W = 75, L = 250



SOXT (Sintered 2-Hole Type)



● Sliding Direction



Material : Copper powder sintered (SO#220)
Hatched Area Sintered
Thickness 1.2 mm or more
SS400(base plate)

W ₁	W ₂	L ₁	L ₂	Catalog No.	W	L	
						SOX	SOXT
		45	15			75	
		50	25		28	100	
		100				150	
		45	15			75	
		50			38	100	
		75	25			125	
		100				150	
		45	15			75	
		50				100	
		75	25		48	125	
		100				150	
-	-	100	50	SOX		200	-
		45	15			75	
		50			58	100	
		100				150	
		25				75	
		50	25			100	
		75			75	125	
		100				150	
		150				200	
		100				250	
		50				100	100
		75				125	125
50	25	100	25		100	150	150
		150				200	200
		200				250	250
			50			300	300
		75		SOX		125	125
		100	25	SOXT		150	150
50	37.5	150			125	200	200
		200				250	250
			50			300	-
		100				150	150
100	25	150	25		150	200	200
		200				250	250

* W₁ and W₂ are the dimensions only for SOX (W = 100 or more).



Order

Catalog No.	W	-	L
SOX	48	-	75
SOXT	125	-	150

■ We are ready to accept requests or orders for special parts.

Copyright © Sankyo Oilless Industry, Inc. All Rights Reserved.