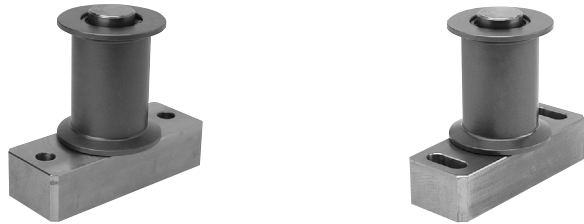


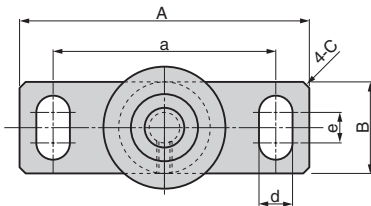
Sheet Guide Roller Set

STOCK WIDTH FIXED TYPE

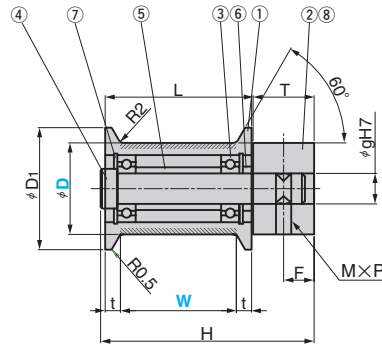
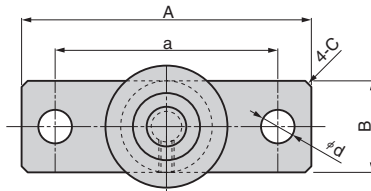
CAD FILE



SGRT



SGRR



Area to be Induction Hardened (Hatched Area)

Table of Components

No.	Description	Qty	Material and Remark
①	Roller	1	S45C HRC55~
②	Base Plate	1	SS400
③	Bearing(Ball bearing)	2	Refer to the standard table below.
④	Roller Set Pin	1	S45C
⑤	Spacer for Bearing	1	STB
⑥	Spacer for Bearing	1	STB
⑦	C-shaped Snap Ring	2	Spring Steel
⑧	Hexagon Socket Set Screw	1	SCM435

D	W	A	a	B	C	d	e	D ₁	H	L	t	T	F	g	M×P
30	38	95	73	30	2	11	10	40	70	48	5	20	10	10	M5×P0.8
55	70	145	115	55	5	13	20	75	127	86	8	35	20	20	M8×P1.25

③ Bearing	Catalog No.	D	W
B6900ZZ	SGRT	30	38
B6004ZZ	SGRR	55	70

Order	Catalog No.	D	W
	SGRT	55	70

Coil Support

COMPACT TYPE

CAD FILE

CLSPS (Steel Type)
CLSPJ (Resin Type)

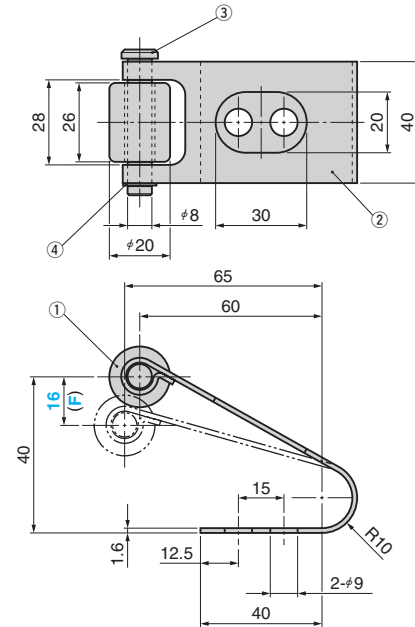


Table of Components

No.	Description	Qty	Material and Remarks
①	Roller (Steel)	1	S45C HRC45 or more
	Roller (Resin)	1	POM(Polyacetal Resin)
②	Plate Spring	1	SK5
③	Hinge Pin	1	S45C
④	G type Retaining Ring	2	G-8
Accessory	Hexagon Socket Bolt	2	M8×20

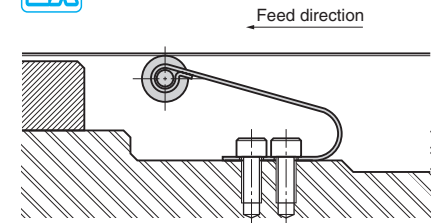
*Travel F is max. 16. (Durability assurance range)

*Resin type roller
The core part is made of steel(S45C).

Spring Constant (N/mm(kgf/mm))	Catalog No.	(F) max
8.43(0.86)	CLSPS CLSPJ	16

Order	Catalog No.	F
	CLSPS	16

EX Example



Blanking Die Components