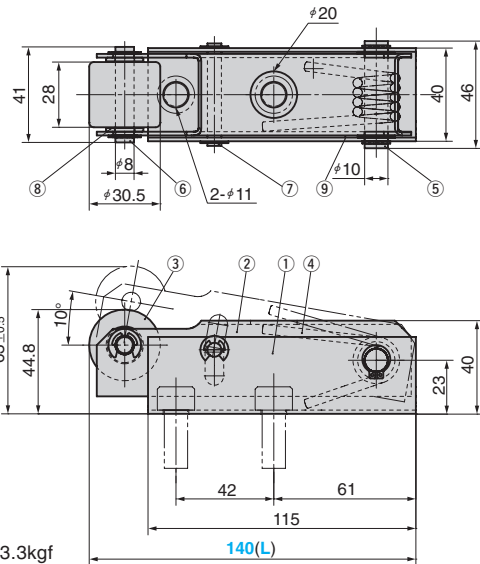


Coil Support

ECONOMY TYPE

CAD FILE

TAJP



*Load (on roller)
Initial pressure : 3.3kgf
End pressure : 5.0kgf

Table of Components

No.	Description	Qty	Material and Remarks
①	Base	1	SS400
②	Tilt plate	1	SS400
③	Roller	1	Copper Alloy(SO-2)
④	Spring	1	SWP-A
⑤	Hinge Pin A	1	S45C
⑥	Hinge Pin A	1	S45C
⑦	Hinge Pin C	1	S45C
⑧	Washer	2	SS400
⑨	Shim	2	SK5

Spring Constant (kgf/deg)	Catalog No.	L
18.84	TAJP	140

Order

Coil Support

SPRING TYPE

CAD FILE

SJPS (Light Load Type)
SJPX (Heavy Load Type)

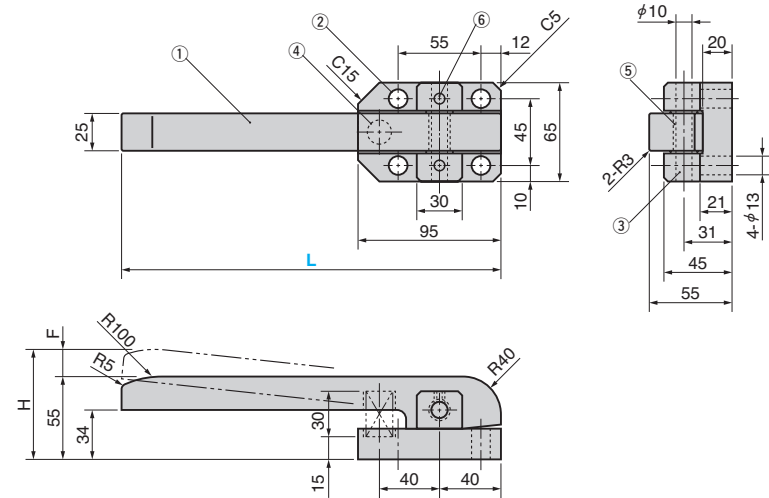


Table of Components

No.	Description	Qty	Material and Remark
①	Support Bar	1	Copper Alloy (SO-2)
②	Base Plate	1	FC250
③	Pin	1	S45C(HRC23~28)
④	Spring	1	φ17-40(Light) , φ16-40(Heavy)
⑤	Bushing with Flange	2	Drystar BM1010F18
⑥	Hexagon Socket Set Screw	2	SCM435 M6×8

④ Spring	Spring load N		H	F	Weight kg	Catalog No.	L
	Installation	Final					
φ17-40	57	95	73.3	18.3	2.2	SJPS	250
φ16-40	240	400				SJPX	250

Order

EX Example

