

# Coil Support

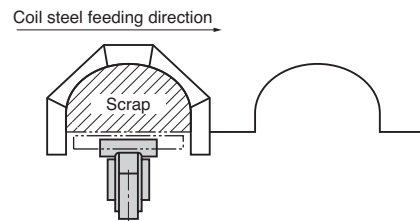
CAM TYPE

CAD  
FILE



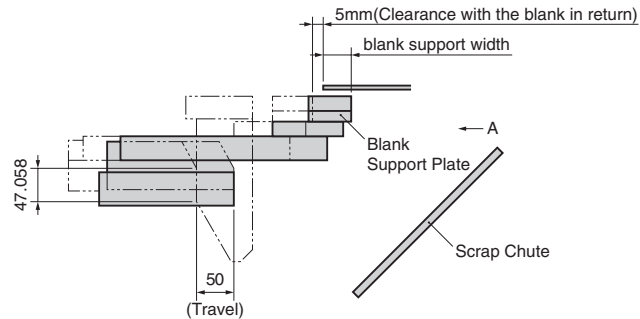
## Coil support cam type means:

The cam type coil support is used to secure the space for scrap machining. This corrects deflection of a blank sheet to prevent hitting with a cutter.



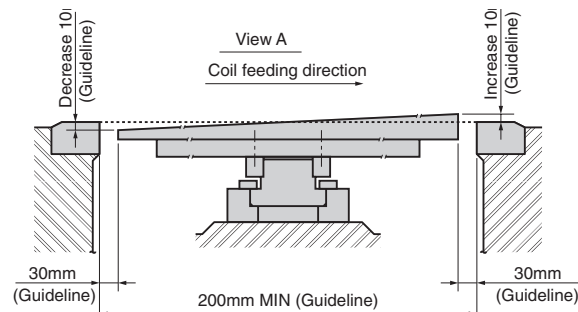
### ■ For Operation

- Set the position of the blank and the coil support.
- The guideline of the clearance between the blank in return (pressing) and the support plate is 5mm.



### ● Standard for use of Coil Support

- When the distance between cutters is 200mm or more and the spring type coil support cannot be used, use this cam type.
- The guideline of distance between the cutter and the blank support plate is 30mm.



⚠ The blank support plate should be manufactured by customers according to the blanking die specification.

📄 Refer to the next page for the standard table.

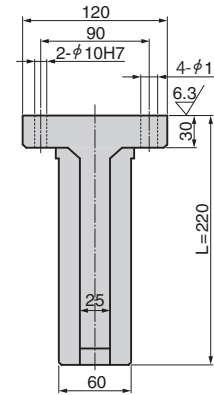
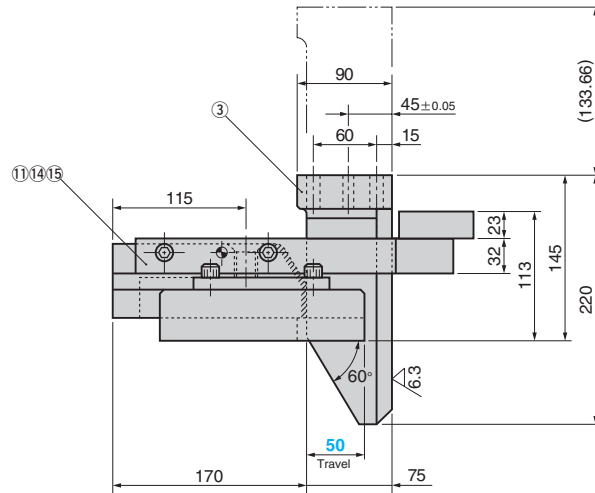
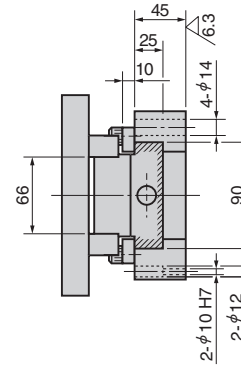
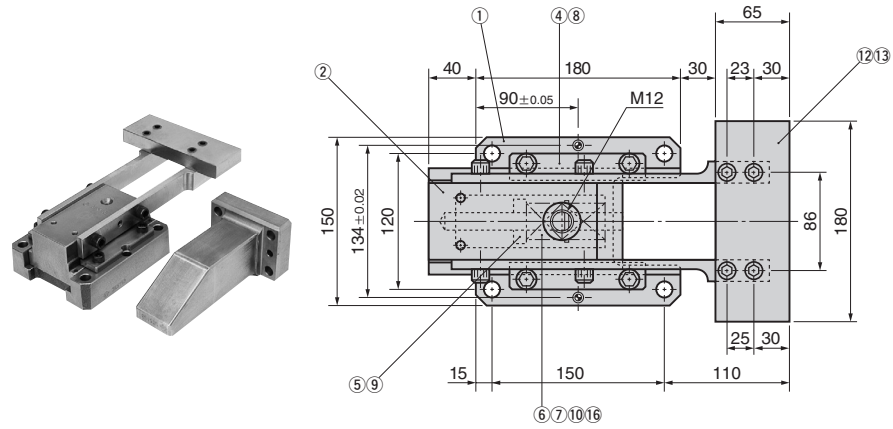
This page  
intentionally  
left blank

# Coil Support

CAM TYPE



STSC

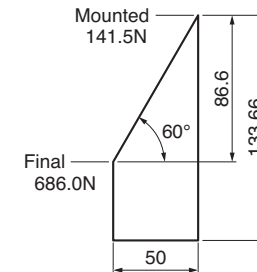


## Table of Components

No.	Description	Qty	Material and Remark
①	Base	1	FC250
②	Slider	1	FC250
③	Driver	1	FC250
④	Upper Plate	2	SS400
⑤	Spring Stopper	1	SS400
⑥	Guide Pin	1	SS400
⑦	Spring	2	SWOSC-V TF30-65
⑧	Hexagon Socket Head Bolt	4	SCM435 M10×25
⑨	Set Screw	1	SCM435 M6×10
⑩	Dowel Pin with Female Thread	1	SUJ2 φ6×30(m6)
⑪	Arm	R/L1	SS400
⑫	Plate	1	SS400
⑬	Hexagon Socket Head Bolt	4	SCM435 M10×40
⑭	Hexagon Socket Head Bolt	4	SCM435 M12×35
⑮	Dowel pin	2	SUJ2 φ10×40
⑯	Washer	1	S45C

## Spring Diagram

- Spring used TF30-65
- Spring constant 21.78N/mm (2.22kgf/mm)



Order

Catalog No.

STSC

S

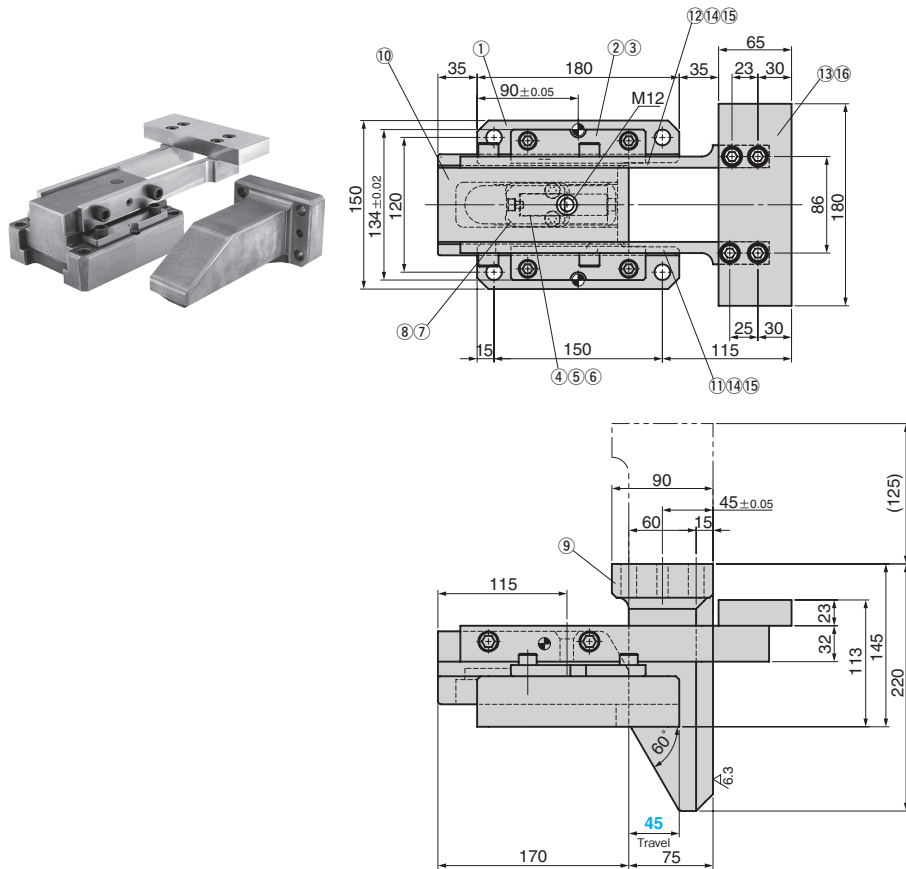
50

# Coil Support GasSpring Type

CAM TYPE

CAD FILE

STSCG



## Table of Components

No.	Description	Qty	Material and Remark
①	Base	1	FC250
②	Upper Plate	2	SS400
③	Hexagon Socket Head Bolt	4	SCM435 M10×25
④	Gas Spring	1	Refer to the Spring Specification Table
⑤	Hexagon Socket Head Bolt	1	SCM435 M6×8
⑥	Washer	1	STEEL M6
⑦	SpringBlock	1	SS400
⑧	Low Head Cap Screw	2	SCM435 M8×12
⑨	Driver	1	FC250
⑩	Slider	1	FC250 with Graphite
⑪	Arm-R	1	SS400
⑫	Arm-L	1	SS400
⑬	Plate	1	SS400
⑭	Hexagon Socket Head Bolt	4	SCM435 M12×35
⑮	Dowel Pin With Female Thread	2	SUJ2 φ10×40
⑯	Hexagon Socket Head Bolt	4	SCM435 M10×40

Blanking Die Components

Spring Force N(kgf)		Catalog No	Travel S	Spring Type PS
Initial Load	Final Load			
238(24.3)	353(36.0)	STSCG	45	GK NGK
237(24.2)	365(37.2)			GD NGD

No Code : Coil Spring    GD : Gas Spring (DADCO)    NGK/NGD/NGS : Without Gas Spring.  
 GK : Gas Spring (KALLER)    Mounting hardware for gas spring included

Order



Option

Option Code	Specification
NF	Nitrogen gas not charged.



Order

STSCG 45 - GK - NF

## Spring Specification

No	Spring Type	Model	Qty	Remark
④	GK	X170-050-TD-2.5MPa	1	Gas Spring (KALLER)
	GD	U.0175.050.TO-2.5MPa	1	Gas Spring (DADCO)



## Gas Spring

Please contact your local sales representative if you prefer to use a gas spring not specified in our catalog. For use and maintenance of gas spring, please contact the manufacturer directly.