

# Pierce Selector PSR series

PIERCE SELECT

CAD  
FILE

Without Sensor

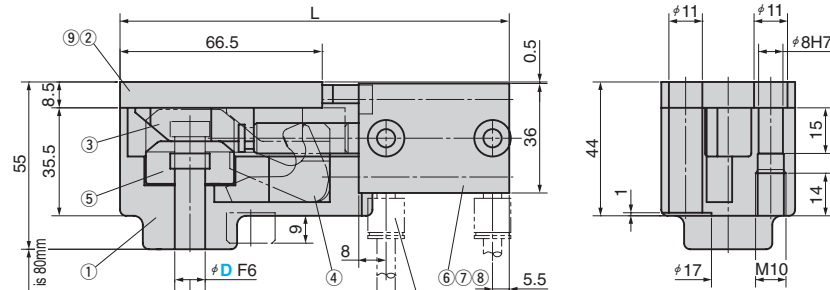
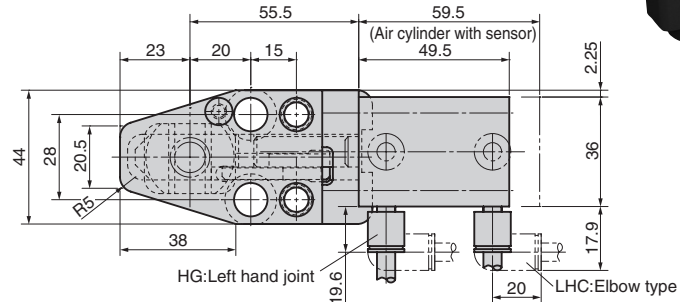
**PSR** (For Round Punch)

**PSRH** (For Irregular Shaped Punch)

With Sensor

**PSRS** (For Round Punch)

**PSRSH** (For Irregular Shaped Punch)



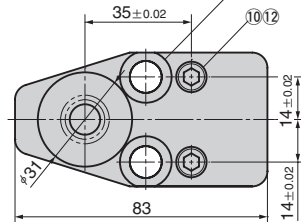
**■ Sensor Specification**  
Contact, 2-wire type  
Operating voltage DC24V AC100V  
Reed length 3m

**■ Table of Components**

No.	Description	Qty	Material and Remark
①	Housing	1	SCM440
②	Backing Plate	1	S45C
③	Slide Bar	1	S45C
④	Lever	1	SCM440
⑤	Adaptor Ring	1	S45C
⑥	Air Cylinder	1	BY CKD (With/without sensor)
⑦	Joint	2	BY CKD (GWS6-M5)
⑧	Hexagon Socket Head Bolt	4	M5-50 (60)
⑨	Hexagon Socket Head Bolt	1	M5-15
⑩	Screw Plug	2	M10-10
⑪	Hexagon Socket Head Bolt	2	M10-65
⑫	Dowel Pin	2	φ8-40

\* Cylinder, driving pressure  
min 0.4MPa

\* Weight  
• Without Sensor...1.0kg  
• With Sensor...1.1kg



L		Catalog No.	D	Joint position G
Without Sensor	With Sensor			
		<b>PSR</b>	<b>10</b>	<b>HG(Left joint)</b>
128	138	<b>PSRH</b> <b>PSRS</b> <b>PSRSH</b>	<b>13</b>	<b>MG(Right joint)</b>
			<b>16</b>	<b>SG(Downward)</b>

\*Joint position  
HG and SG are as shown in the diagram on the left page. The positions for MG are in a symmetric positions of HG shown in the diagram on the left page.

Order **PSR 13 - HG**

Option **LHC** The pipe joint is changed to the L (elbow) type. (GWL6-M5).

Order **PSR13 - HG - LHC**

**■ For Operation**

**● Mounting a punch**

- 1) Remove the backing plate and slide bar to pull out the piercing ring.
- 2) Mount the punch on the piercing ring.
- 3) Incorporate the piercing ring with a punch mounted on the retainer.

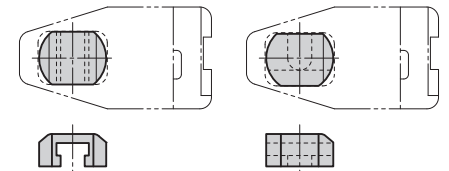
When using an irregular shaped punch, incorporate the piercing ring so that the slanted surface of the chamfer is in the rear (air cylinder side). It cannot be incorporated in reverse direction.

- 4) Incorporate the slide bar and backing plate.

\* When using an irregular shaped punch, the clearances for the piercing ring and retainer main body must be correctly controlled. Check the alignment marks before setting in place.

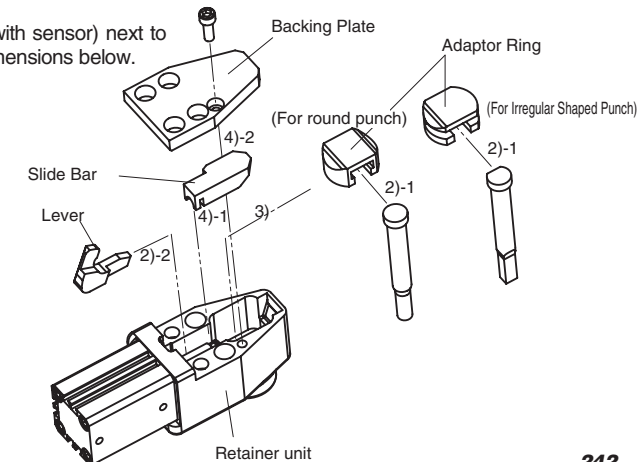
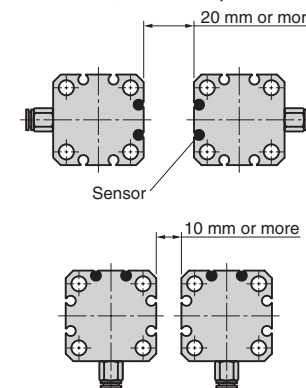
**● Adaptor ring specification**

(For round punch) (For Irregular Shaped Punch)



**● Precautions for using a sensor**

When using PSRS type (PSR series with sensor) next to each other, secure a space with the dimensions below.



Pierce Components