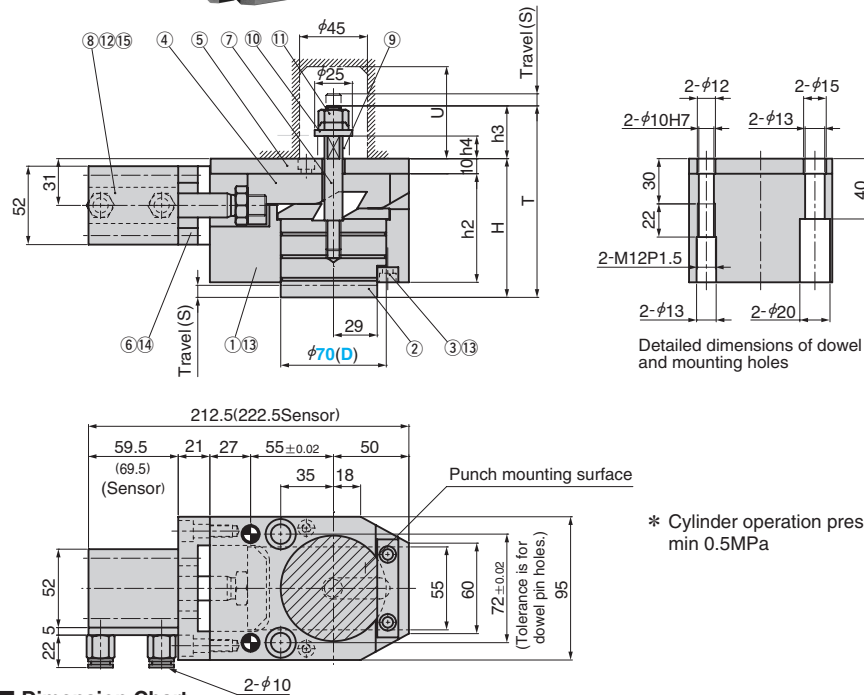
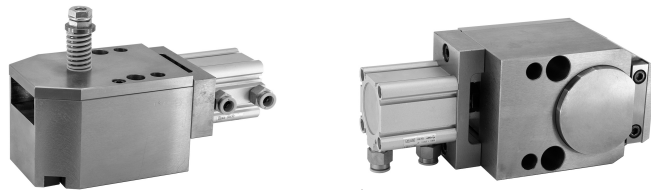


Removable Punch Retainer Unit

REMOVABLE PUNCH RETAINER UNIT

NEW CAD FILE

SHPUC 70



* Cylinder operation pressure min 0.5MPa

Dimension Chart

Travel S	h2	h3	h4	H	T	U
8	72	35	15	92	127	55
12	76	42.5	22.5	100	142.5	60

Table of Components

No.	Description	Qty	Material and Remark	No.	Description	Qty	Material and Remark
①	Slide Casing	1	Steel	⑨	Spring	1	TR21-30(For 8st), TR21-45(For 12st)
②	Float Pin	1	Steel HRC20~25	⑩	Washer	1	Steel
③	Key	1	Steel HRC38~48	⑪	Hard Lock Nut	1	For M10
④	Slide Plate	1	Steel HRC38~48	⑫	Hexagon Socket Head Bolt	4	M5×60
⑤	Backing Plate	1	Steel HRC20~25	⑬	Hexagon Socket Head Bolt	4	M6×15
⑥	Block	1	Steel	⑭	Hexagon Socket Head Bolt	2	M8×25
⑦	Stud Bolt	1	Steel	⑮	Male Connector	2	KQ2H10-01AS by SMC
⑧	Air Cylinder(with out Sensor)	1	CQ2B40-30DCMZ SMC(made)	⑯	Dowel Pin with Female Thread	2	φ10×60(Accessories)
	Air Cylinder(Sensor)	1	CDQ2B40-30DCMZ-A93L SMC(made)	⑰	Screw Plug	2	M12×1.5(Accessories)

Spring			Working force kN	Tool Installation Weight kg	Weight kg	Catalog No.	(D)	Stroke mm
Initial Load N	Final Load N	Model						
96	207	TR21-30	54	5	8.1	SHPUC	70	8
97	207	TR21-45	31		8.4			12



Option

Option Code	Specification
SA	Cylinder with Sensor
LHC	The accompanying Pipe Joint is changed to L type

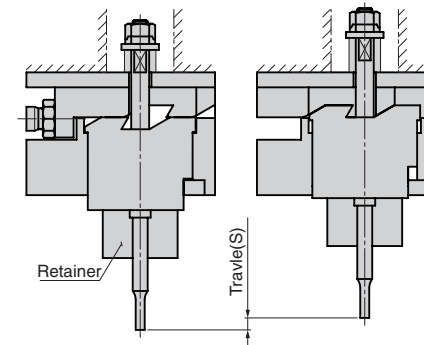


Order

Catalog No.	(D)	Travel	ST	Option
SHPUC	70	8		SA



Example



▲ The limit number for joint operation is 4 units. If you want to use the unit in joint operation, please contact our sales representative.

SA Option
Length of Cylinder
69.5mm Total Length
222.5mm(+10mm) Sensor
Specification.
2_wire contact switch
Type:A93L(SMC)
Power
consumption:DC12/24V
Lead wire length:3m

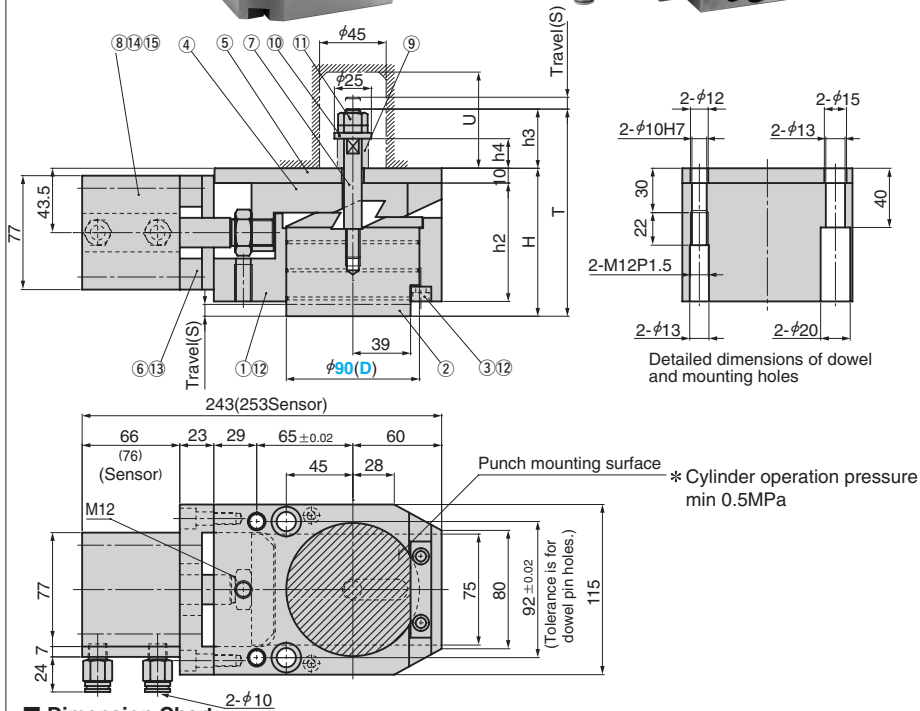
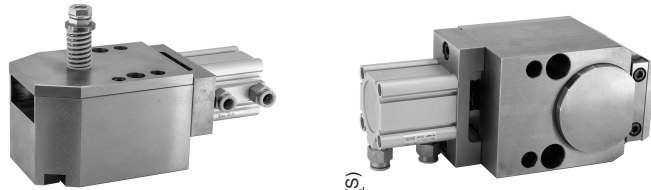
* The air ports can be easily changed by rotating the cylinder mounting position (4 directions).

Removable Punch Retainer Unit

REMOVABLE PUNCH RETAINER UNIT

NEW CAD FILE

SHPUC 90



Dimension Chart

Travel S	h2	h3	h4	H	T	U
8	80	40	20	100	140	55
12	84	47	27	108	155	65

Table of Components

No.	Description	Qty	Material and Remark	No.	Description	Qty	Material and Remark
①	Slide Casing	1	Steel	⑨	Spring	1	TR21-40(For 8st), TR21-55(For 12st)
②	Float Pin	1	Steel HRC20~25	⑩	Washer	1	Steel
③	Key	1	Steel HRC38~48	⑪	Hard Lock Nut	1	For M10
④	Slide Plate	1	Steel HRC38~48	⑫	Hexagon Socket Head Bolt	4	M6×15
⑤	Backing Plate	1	Steel HRC20~25	⑬	Hexagon Socket Head Bolt	4	M8×25
⑥	Block	1	Steel	⑭	Hexagon Socket Head Bolt	4	M8×65
⑦	Stud Bolt	1	Steel	⑮	Male Connector	2	KQ2H10-02AS by SMC
⑧	Air Cylinder(with out Sensor)	1	CQ2B63-30DCMZ SMC(made)	⑯	Dowel Pin with Female Thread	2	φ10×60(Accessories)
	Air Cylinder(Sensor)	1	CDQ2B63-30DCMZ-A93L SMC(made)	⑰	Screw Plug	2	M12×1.5(Accessories)

Spring			Working force kN	Tool Installation Weight kg	Weight kg	Catalog No.	(D)	Stroke mm
Initial Load N	Final Load N	Model						
124	207	TR21-40	64	6	15.2	SHPUC	90	8
120	210	TR21-55	47					12



Option

Option Code	Specification
SA	Cylinder with Sensor
LHC	The accompanying Pipe Joint is changed to L type

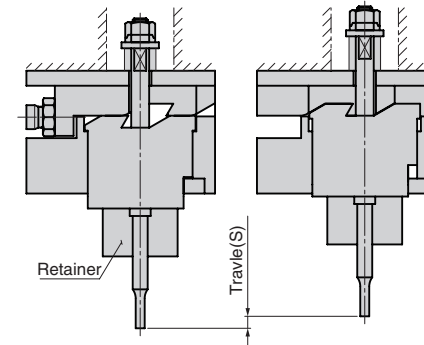


Order

Catalog No.	(D)	Travel ST	Option
SHPUC	90	8	SA



Example



▲ The limit number for joint operation is 4 units. If you want to use the unit in joint operation, please contact our sales representative.

SA Option
 Length of Cylinder 76mm Total Length 253mm(+10mm) Sensor Specification.
 2_wire contact switch Type:A93L(SMC)
 Power consumption:DC12/24V
 Lead wire length:3m

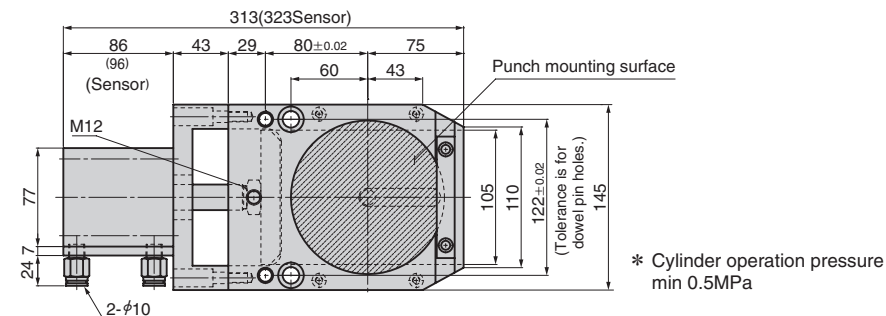
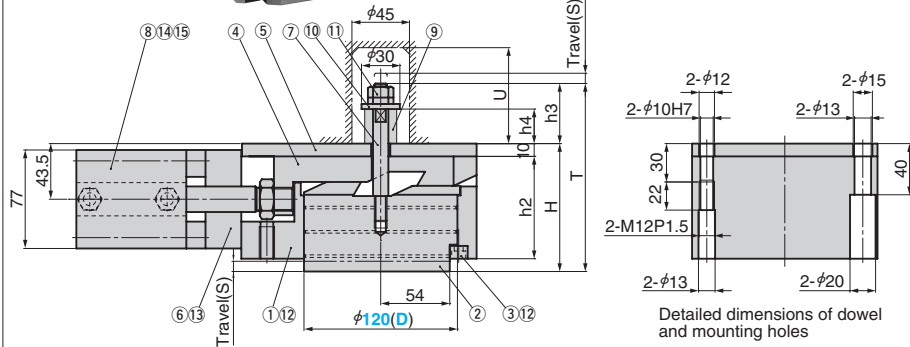
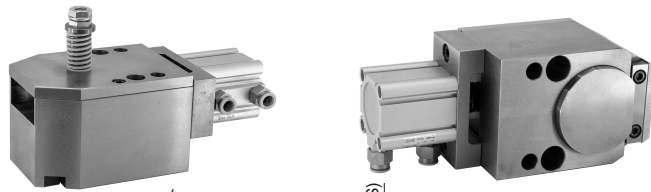
* The air ports can be easily changed by rotating the cylinder mounting position (4 directions).

Removable Punch Retainer Unit

REMOVABLE PUNCH RETAINER UNIT

NEW CAD FILE

SHPUC 120



Dimension Chart

Travel S	h2	h3	h4	H	T	U
8	80	47	27	100	147	60
12	84	55	35	108	163	75

Table of Components

No.	Description	Qty	Material and Remark	No.	Description	Qty	Material and Remark
①	Slide Casing	1	Steel	⑨	Spring	1	TF25-45(For 8st), TF25-60(For 12st)
②	Float Pin	1	Steel HRC20~25	⑩	Washer	1	Steel
③	Key	1	Steel HRC38~48	⑪	Hard Lock Nut	1	For M10
④	Slide Plate	1	Steel HRC38~48	⑫	Hexagon Socket Head Bolt	6	M6×15
⑤	Backing Plate	1	Steel HRC20~25	⑬	Hexagon Socket Head Bolt	4	M8×25
⑥	Block	1	Steel	⑭	Hexagon Socket Head Bolt	4	M8×85
⑦	Stud Bolt	1	Steel	⑮	Male Connector	2	KQ2H10-02AS by SMC
⑧	Air Cylinder(with out Sensor)	1	CO2B63-50DCMZ SMC(made)	⑯	Dowel Pin with Female Thread	2	φ10×60(Accessories)
	Air Cylinder(Sensor)	1	CDQ2B63-50DCMZ-A93L SMC(made)	⑰	Screw Plug	2	M12×1.5(Accessories)

Spring			Working force kN	Tool Installation Weight kg	Weight kg	Catalog No.	(D)	Stroke mm
Initial Load N	Final Load N	Model						
218	392	TF25-45	179	10	21.5	SHPUC	120	8
212	408	TF25-60	158		22.1			12



Option

Option Code	Specification
SA	Cylinder with Sensor
LHC	The accompanying Pipe Joint is changed to L type

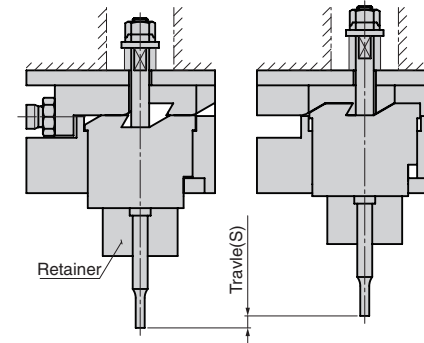


Order

Catalog No.	(D)	Travel	ST	Option
SHPUC	120	8		SA



Example



A The limit number for joint operation is 4 units. If you want to use the unit in joint operation, please contact our sales representative.

SA Option
Length of Cylinder
96mm Total Length
323mm(+10mm) Sensor
Specification.
2_wire contact switch
Type:A93L(SMC)
Power
consumption:DC12/24V
Lead wire length:3m

* The air ports can be easily changed by rotating the cylinder mounting position (4 directions).