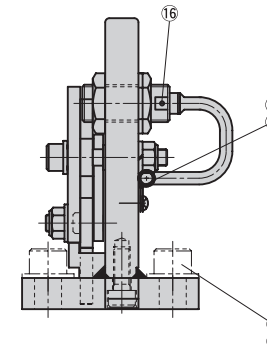
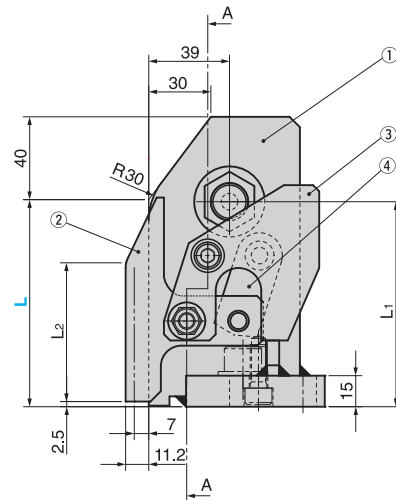
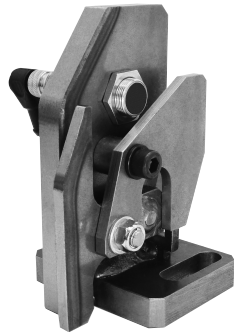


Panel Input Detector Gauge

PARALLEL LINK GAUGE SURFACE HARDENED TYPE

CAD FILE

HTKHL (L Type)
HTKHR (R Type)



* This figure shows the L type. The R type is symmetrical.

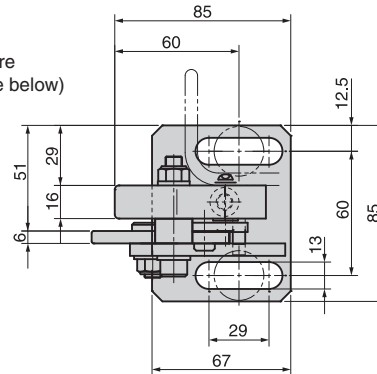
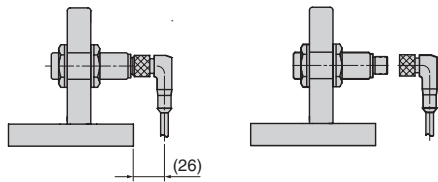
EFECTOR Connector (IG0348, UL Standard)

- Operation Power Voltage;
AC / DC 20V to 250V
- Connector Type - with anti-loosening mechanism;
Neither the wire adjustment nor switch replacement are required for this removable cable type. (See the figure below)

(The switch turns on at 7mm away from the gauge surface.)

EFECTOR's Switch Mounted

* Connector (cable) disconnected.



* The lead wire length is 5m.

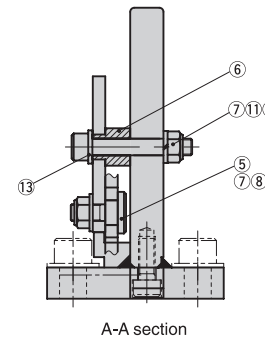


Table of Components

No.	Description	Qty	Material and Remark
①	Gauge	1	S45C HRC50~60
②	Detection Lever	1	S45C HRC50~60
③	F Link	1	SS400
④	R Link	1	SS400
⑤	Pin	1	S45C
⑥	Collar	1	SS400
⑦	U Nut	2	For M8
⑧	Flat Washer	1	For M8
⑨	Round Head Screw	1	M4×8
⑩	Cable clip	1	UC-1
⑪	Spring Washer	1	For M8
⑫	Hexagon Socket Head Bolt	1	M8×50
⑬	Flat Washer	1	WSSBH16-8-2
⑭	Hexagon Socket Head Bolt	2	M12×35 (Accessory)
⑮	Flat Washer	2	For M12 (Accessory)
⑯	Proximity Switch(for AC)	(1)	E2E-X5Y1-5M by Omron
⑰	Proximity Switch(for DC)	(1)	E2E-X5E1-5M by Omron
⑱	Proximity Switch(for EC)	(1)	IG0348 by EFECTOR

L1	L2	Catlog No.	L	Switch Type
99	42	HTKHL HTKHR	75	AC (for 24V to 240V)
99	67		100	DC (24V)
124	117		150	EC (EFECTOR connector) SN (without switch)

Order	Catlog No.	L	Switch Type
	HTKHL	100	AC
	HTKHR	150	SN

NOTES:

- The detection lever (②) pushes the switch (⑰) by working in parallel. Therefore, the adjustment is unnecessary for the gauge mounting surface, lever length, and axis of lever.
- The detection lever working in horizontal reduces necessary step machining between the die face and gauge mounting surface down to 3mm.
- The clearance between the detection lever and die face become about a half compared with a conventional product.

