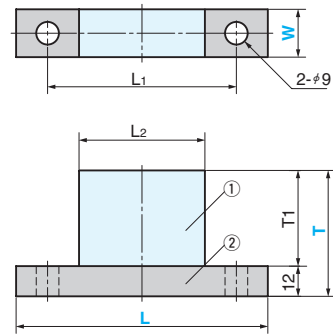
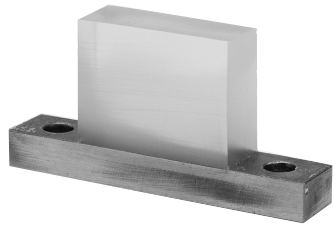


Urethane For Lifter

URETHANE FOR LIFTER

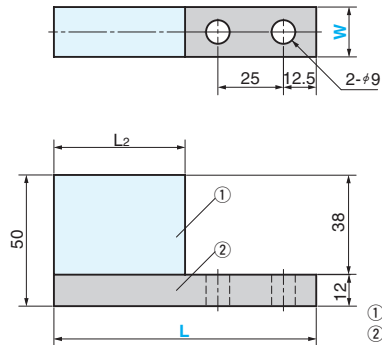
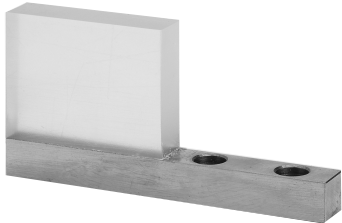
CAD
FILE

LGCUT (Both end type)



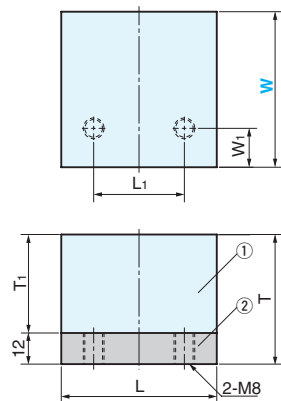
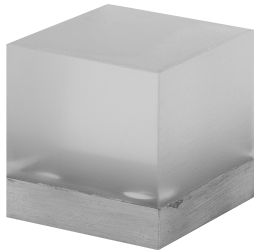
①Urethane Shore A70
②SS400

LGCUC (One end type)



①Urethane Shore A70
②SS400

LGCUB (Block Type)



①Urethane Shore A70
②SS400

L1	L2	T1	Catalog.No	W	L	T
75	50			12	100	50
75	50	38			100	
125	100				150	50
175	150				200	
75	50		LGCUT	19	100	
125	100	88			150	100*
175	150				200	
125	100	38		38	150	50
175	150				200	50



Order

Catalog No. W - L - T
LGCUT 19 - 150 - 50

■Cutting range of LGCUT



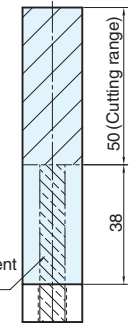
Since T=100 has a reinforcement rod, be careful for the cutting range. (Refer to the figure on the right)

L2	Catalog.No	W	L
50		12	100
50	LGCUC	19	100
100			150



Order

Catalog No. W - L
LGCUC 19 - 100



Reinforcement rod
2-#8x50
When L=100, the reinforcement rod is one.

L	T	L1	W1	T1	Catalog.No	W
50	50	30	10	38		50
60	50	35	15		LGCUB	60
70	75	40	20	63		70
90	75	50	30		LGCUB	90



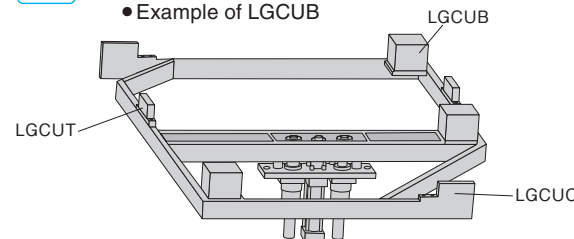
Order

Catalog No. W
LGCUB 60



Example

● Example of LGCUB



- Use it on the lifter arm to prevent damage to outer panels.
- Mount the angle piece on the lifter arm and install LGCUB on top.
- Avoid unbalanced load onto the urethane as much as possible as such unbalanced load condition may cause the urethane to fail.
- The maximum operating temperature of the urethane is 70°C / 158°F. Monitor temperatures closely during additional machining as well as the atmospheric conditions during the use of the product.