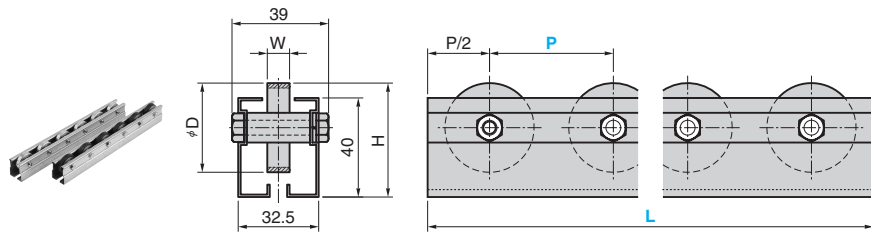


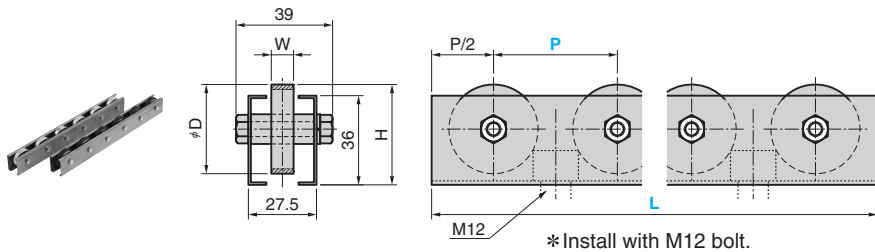
Single Carrier

FOR PANEL STACK AND TRANSFER

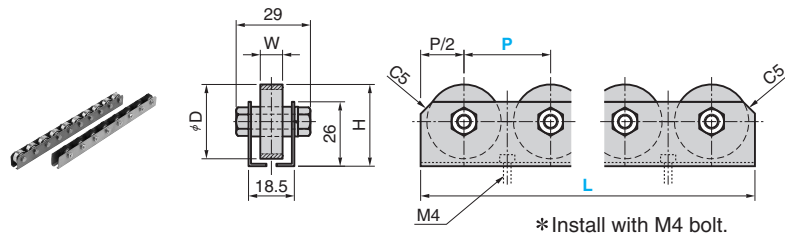
SCA



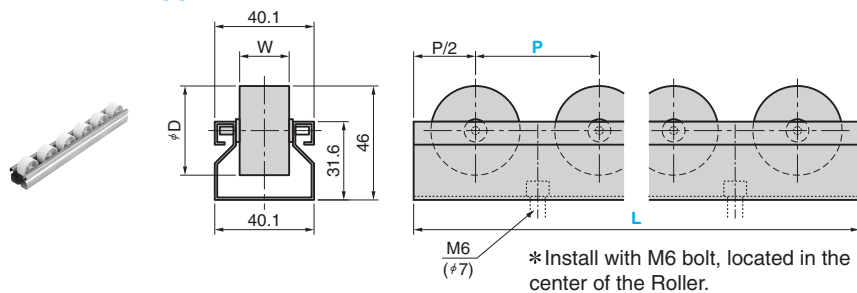
SCB



SCH



SCP



Hatched Area of the wheel represents rubber lining (40R and 30R for wheel type).

Frame Shape	Wheel Outer Diameter (D) type	Withstand Load/ Wheel quantity(kg)	Wheel Dimension Outer Diameter (D) × Width (W) × Shaft Diameter	Dead Load/1 m (kg)	Standard Length	Remark Wheel Type
SCA	36S	40	36 × 9×6	2.26	2000	Machined Wheel (S)
	36P	20	36 × 12×6	1.49		Press Wheel (P)
	40R	25	40 × 9×6	2.28	3000	Rubber Lining (R)
SCB	36S	40	36 × 9×6	2.53	2000	Machined Wheel (S)
	36P	20	36 × 12×6	1.76		Press Wheel (P)
	40R	25	40 × 9×6	2.55	Rubber Lining (R)	
SCH	25S	30	25.4× 9×6	1.82	1800	Machined Wheel (S)
	25P	15	25.4×7.5×6	1.82	2000	Press Wheel (P)
	30R	20	30 × 9×6	1.69	Rubber Lining (R)	
SCP	36CA	10	36 × 20×3.2	1.22	2000	Plastic wheel without anti-static agent (CA)
					2500	
					3000	

D	W	H	Catalog No.		Interval P	Overall length L
			Frame Shape	Wheel Type		
36	9	46	SCA	36S	50·75	L ≤ 3000
	12			36P		
40	9	48	SCB	40R	50·75	L ≤ 2000
36	9	40.5		36S		
40	9	42.5	SCH	36P	30·35	L ≤ 2000
25.4	9	30.7		25S		
30	9	33	SCP	25P	40·50	L ≤ 3000
36	20	—		30R		



Order

- -

SCA 36P - 50 - 2500

SCA, SBC, SCH and SCP are made to order.

* Determine the L dimension multiplying P (interval). When the standard length (above table) is not the multiplied number of interval, the interval is slightly adjusted.