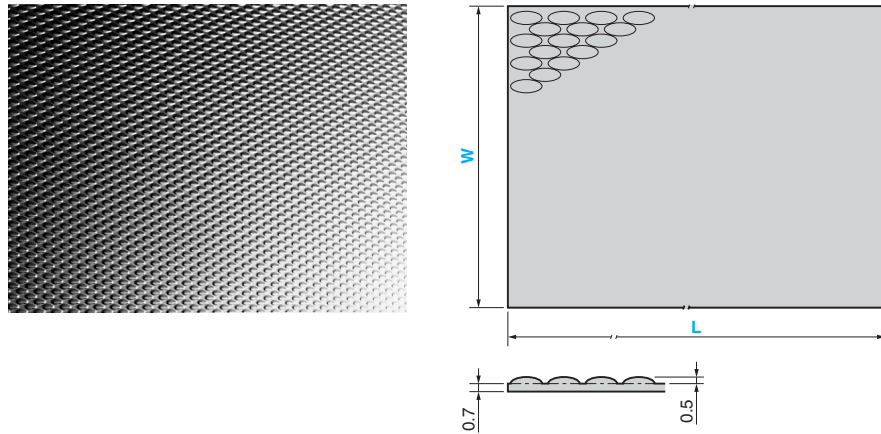


# Emboss Plate

FOR SCRAP CHUTE

EMS



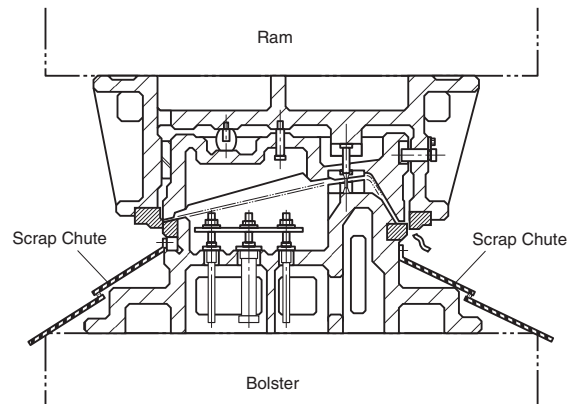
Material : SUS304

Catalog No.	W	L
EMS	1000	1000 2000

Order   -

## For Operation

- This plate has emboss dimples. Use the plate at the angle of 12° or more.
- Spot weld this plate on a normal scrap chute for use.
- The welding interval is approximately 150 to 200 mm.

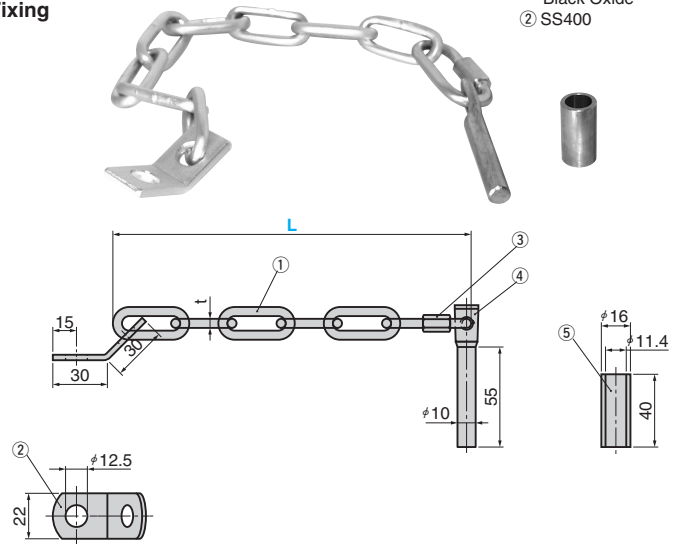


# Stopper For Scrap Chute

FOR SCRAP CHUTE

## Chain Set for Chute Fixing CHNS

Material : ① SS400  
Black Oxide  
② SS400



No.	Material and Remark
①	SS400 Unicro
②	SS400
③	SS400 Joint Fixture
④	SS400 Unicro
⑤	STKM

## Chain Set for Chute Fixing

t	Number of Links	Catalog No.	L
	7		200
5	10	CHNS	300
	15		500

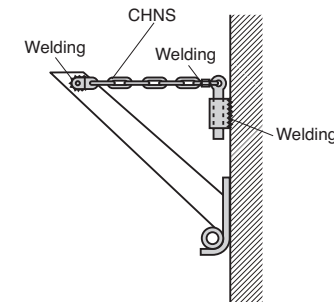


Order

⚠ The joint bracket (③) is to be welded after fine adjustments are done.



Example



⚠ The chain-set described as CHNS is to be fixed onto the lower die and the scrap chute.