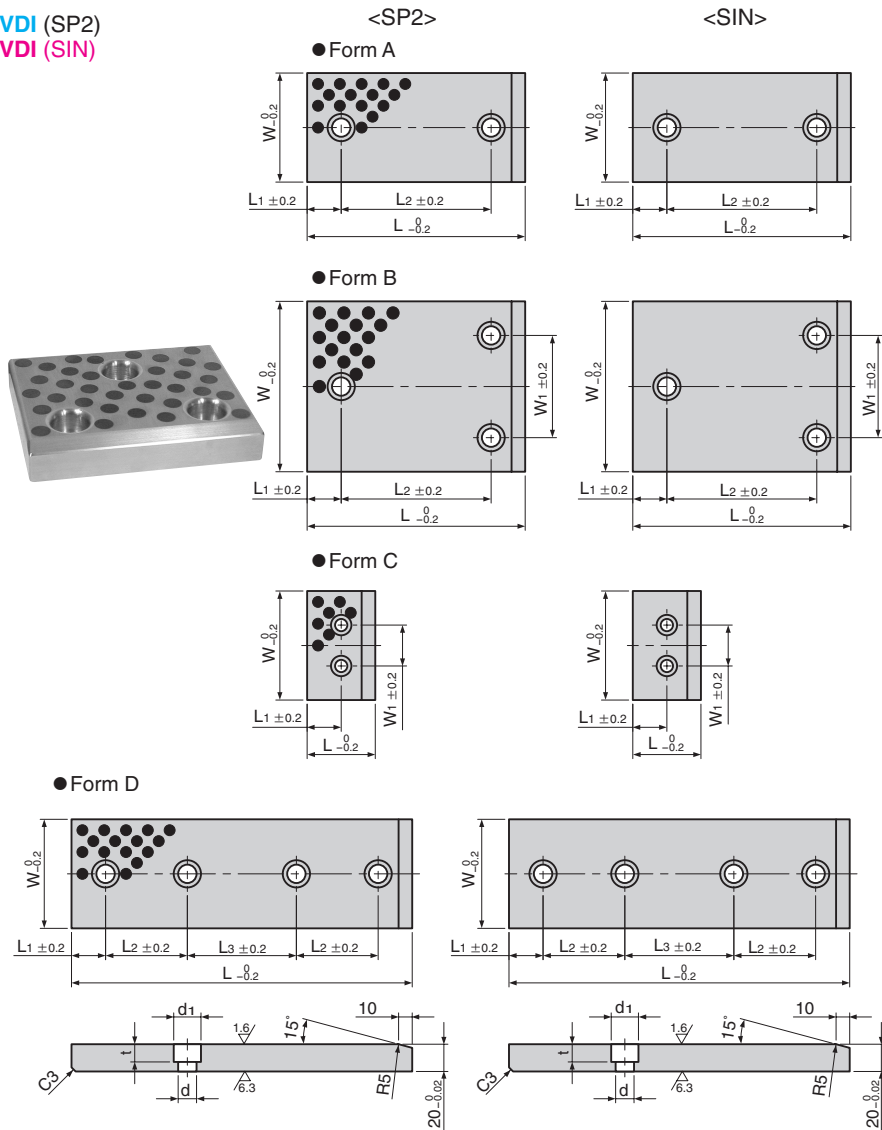


VDI (SP2)
VDI (SIN)



● Sliding Direction



Material : SP2
Bronze with Graphite
(SO#50SP2)
: SIN
Copper powder sintered (SO#220)
Hatched Area Sintered
Thickness 1.2 mm or more
SS400(base plate)

Catalog No.		W	L	L1	L2	L3	W1	Form	d	d1	t	Recommended mounting bolt
Bronze with Graphite "SP2" Type	Copper Powder Sintered "SIN" Type											
VDI-12-SP2	VDI-12-SIN		80		30				9	15	9	M8x25
VDI-13-SP2	VDI-13-SIN		100		50							
VDI-14-SP2	VDI-14-SIN	50	125		75	—	—	A	13.5	20	13	M12x25
VDI-15-SP2	VDI-15-SIN		160		110							
VDI-16-SP2	VDI-16-SIN		200		150							
VDI-111-SP2	VDI-111-SIN		250		60	80		D				
VDI-21-SP2	VDI-21-SIN		50	25	—		30	C	9	15	9	M8x25
VDI-22-SP2	VDI-22-SIN		80		30							
VDI-23-SP2	VDI-23-SIN		100		50							
VDI-24-SP2	VDI-24-SIN	80	125		75	—	—	A	13.5	20	13	M12x25
VDI-25-SP2	VDI-25-SIN		160		110							
VDI-26-SP2	VDI-26-SIN		200		150							
VDI-121-SP2	VDI-121-SIN		250		60	80		D				
VDI-31-SP2	VDI-31-SIN		50	25	—		50	C				
VDI-32-SP2	VDI-32-SIN		80	40	—							
VDI-33-SP2	VDI-33-SIN		100		50	—						
VDI-34-SP2	VDI-34-SIN	100	125		75	—	—	A	13.5	20	13	M12x25
VDI-35-SP2	VDI-35-SIN		160	25	110							
VDI-36-SP2	VDI-36-SIN		200		150							
VDI-150-SP2	VDI-150-SIN		250		60	80		D				
VDI-41-SP2	VDI-41-SIN		50	25	—							
VDI-42-SP2	VDI-42-SIN		80	40	—			C				
VDI-43-SP2	VDI-43-SIN		100		50	—						
VDI-44-SP2	VDI-44-SIN	125	125		75	—	75	B	13.5	20	13	M12x25
VDI-45-SP2	VDI-45-SIN		160	25	110							
VDI-46-SP2	VDI-46-SIN		200		150							
VDI-155-SP2	VDI-155-SIN		250		60	80	—	D				
VDI-51-SP2	VDI-51-SIN		50	25	—							
VDI-52-SP2	VDI-52-SIN		80	40	—			C				
VDI-53-SP2	VDI-53-SIN		100		50	—						
VDI-54-SP2	VDI-54-SIN	160	125	25	75	—	110	B	13.5	20	13	M12x25
VDI-55-SP2	VDI-55-SIN		160		110							
VDI-56-SP2	VDI-56-SIN		200		150							
VDI-160-SP2	VDI-160-SIN		250		60	80		D				



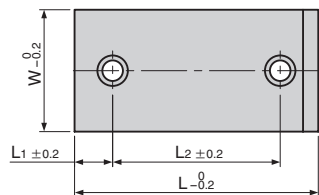
Order

Catalog No.

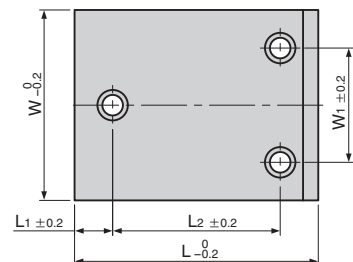
VDI-25-SP2

VDI (ST02)

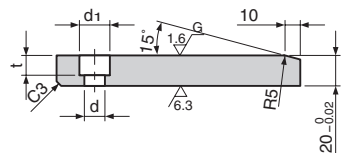
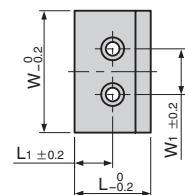
● Form A



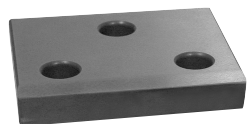
● Form B



● Form C



VDI(ST02) Material : 1.2379
 DIN X55CrVMo12.1
 (SKD11)
 Hardness : HRC58~60



Catalog No.	W	L	L ₁	L ₂	W ₁	Form	d	d ₁	t	Recommended mounting bolt
VDI-62-ST02		80		30			9	15	9	M8x25
VDI-63-ST02		100		50						
VDI-64-ST02	50	125		75	—	A	13.5	20	13	M12x25
VDI-65-ST02		160		110						
VDI-66-ST02		200		150						
VDI-71-ST02		50	25	—	30	C	9	15	9	M8x25
VDI-72-ST02		80		30						
VDI-73-ST02	80	100		50						
VDI-74-ST02		125		75	—	A	13.5	20	13	M12x25
VDI-75-ST02		160		110						
VDI-76-ST02		200		150						
VDI-81-ST02		50	25	—	50	C				
VDI-82-ST02		80	40	—						
VDI-83-ST02	100	100		50			13.5	20	13	M12x25
VDI-84-ST02		125	25	75	—	A				
VDI-85-ST02		160		110						
VDI-86-ST02		200		150						
VDI-91-ST02		50	25	—		C				
VDI-92-ST02		80	40	—						
VDI-93-ST02	125	100		50	75		13.5	20	13	M12x25
VDI-94-ST02		125	25	75		B				
VDI-95-ST02		160		110						
VDI-96-ST02		200		150						
VDI-101-ST02		50	25	—		C				
VDI-102-ST02		80	40	—						
VDI-103-ST02	160	100		50	110		13.5	20	13	M12x25
VDI-104-ST02		125	25	75		B				
VDI-105-ST02		160		110						
VDI-106-ST02		200		150						



Order

Catalog No.
[VDI-85-ST02](#)