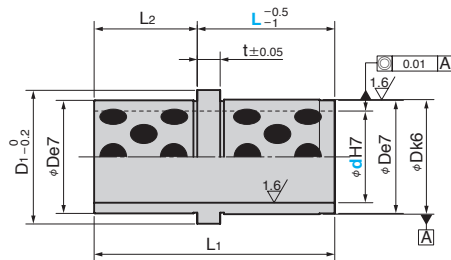


SOVM



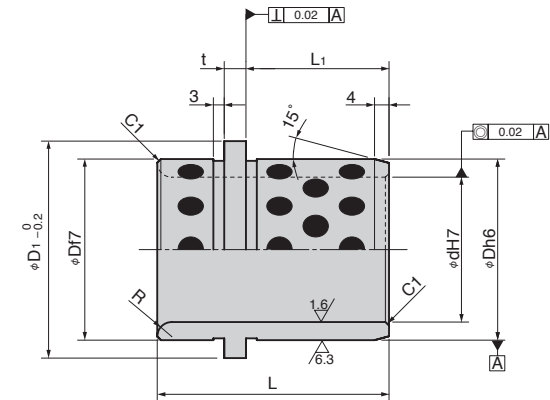
● Sliding Direction



Material : Bronze with Graphite (SO#50 SP2)

*Operation ambient temperature: 0 to 300°C

TSOEG



● Sliding Direction



Material : Bronze with Graphite (SO#50 SP2)

*Operation ambient temperature: 0 to 300°C

L1	L2	t	D	Tolerance		D1	d H7		Catalog No.	d	L
				e7	k6						
15	6	3	14	-0.032	+0.012	16	9	+0.015	SOVM	9	009
				-0.050	+0.001		10	0		10	017
26	9		20			25	14	+0.018	SOVM	14	017
							15			0	15
39	17	6	26	-0.040	+0.015	31	18		SOVM	18	022
				-0.061	+0.002		20				20
49	22	6	30			35	22	+0.021	SOVM	22	027
							24	0		24	036
63	27		42			47	30		SOVM	30	036
										-0.050	+0.018
73				-0.075	+0.002						

Order -

Order -

d	L	L1	t	D f7	D h6	D1	d H7	R	Catalog No.	Nominal
25	43	24	7.5	35		40	25	+0.021	TSOEG	25
				42	0	47	30	0		3
30	60	35.5	6	50	-0.025	59.9	40	+0.025	TSOEG	40.1
				50	-0.050	50	0			40.2
40	77	44.5	8	63		71.9	50		TSOEG	50.3
										92
50	78	49	7.5	80	-0.030	86	60		TSOEG	60
										95
60	100	62.5	8		-0.060	89.9	63	+0.030	TSOEG	63.6
										108