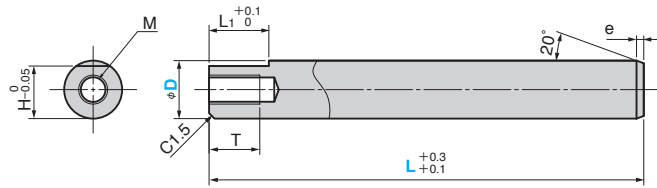


Inclined Pins

FOR KOCU-S

RoHS

BOK



●Material

EN Standard	JIS	AISI·ASTM	ISO
1.1213(Cf53)	S50C	1049	C50
1.7225(42CrMo4V)	SCM440	4140	42CrMo4
1.7131(16MnCr5)	SCr415	—	16MnCr5
1.4112(X90CrMov18)	—	—	—

Hardness :HRC58 ~ 62

D	Tolerance		L ₁	T	e	H	M	Catalog No.	D	Tolerance	L Increments of 1mm	Material (EN Standard)
	h7	g6										
8	0	-0.005	8.5	7	7	M4	BOK	8	h7 g6	L ≤ 1000	1.1213 1.7225 1.7131 1.4112	
10	-0.015	-0.014	10.5	8	9	M5						
12	0	-0.006	12.5	10	11	M6						
16	-0.018	-0.017	16.5	14	14.5	M8						
20	0	-0.007	20.5	18	18	M10						
25	-0.021	-0.020	25.5	23	22.5	M12						
30	0	-0.009	30.5	24	27							
35	-0.025	-0.025	35.5	32	32							
40	0	-0.009	40.5	36	36							
45	-0.025	-0.025	45.5	40	40							

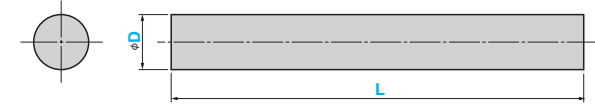
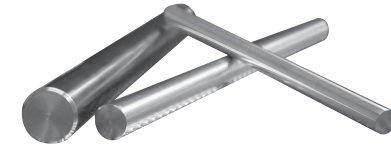
Order **Catalog No.** - **D** - **L** - **Material**
BOK - **30h7** - **900** - **1.7225**

Inclined Pins

FOR KOCU-S

RoHS

BOR



●Material

EN Standard	JIS	AISI·ASTM	ISO
1.1213(Cf53)	S50C	1049	C50
1.7225(42CrMo4V)	SCM440	4140	42CrMo4

Hardness : 1.1213 HRC58 ~ 62
 (Depth 1.5 ~ 2.0mm)
 1.7225 Tempered

D	Tolerance		Catalog No.	D	Tolerance	L Increments of 1mm	Material (EN Standard)
	h7	g6					
8	0	-0.005	BOR	8	h7 g6	L ≤ 1000	1.1213 1.7225
10	-0.015	-0.014		10			
12	0	-0.006		12			
16	-0.018	-0.017		16			
20	0	-0.007		20			
25	-0.021	-0.020		25			
30	0	-0.009		30			
35	-0.025	-0.025		35			
40	0	-0.009		40			
45	-0.025	-0.025		45			

Order **Catalog No.** - **D** - **L** - **Material**
BOR - **10g6** - **900** - **1.7225**