

KOCU-K

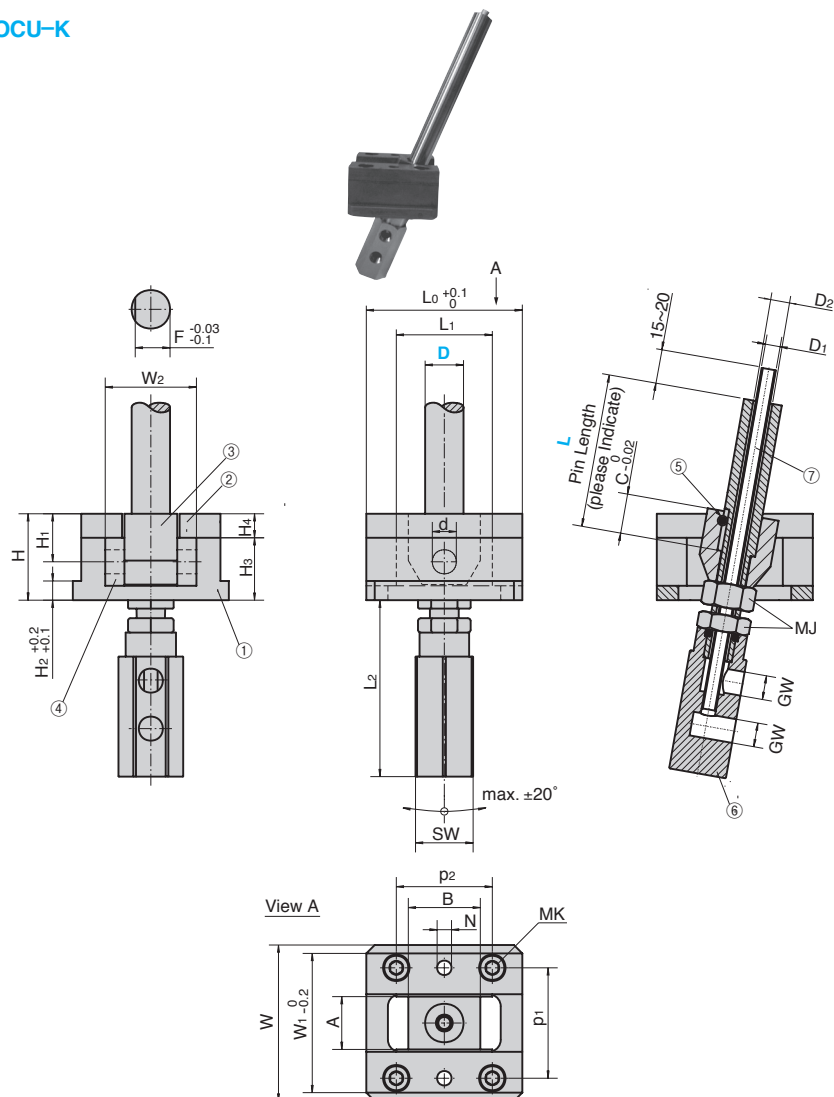


Table of Components

No.	Description	Qty	Material and Remark	No.	Description	Qty	Material and Remark
①	Slide Base	1	S45C Tufftrided	④	Slide Plate	2	Bronze with Graphite(SO#50SP2)
②	Upper Plate	2	S45C Tufftrided	⑤	Loosening Lock	1	SK5M
③	Pin Holder	1	S45C Tufftrided	⑥	Manifold	1	DIN CuZu25Al5
				⑦	Pipe	1	Stainless Steel

Material detail

S45C(①~③) ... C45 A 1045

D	D1	D2	d	A	B	C	F	H	H1	H2	H3	H4	L0	L1	L2	W	W1	W2
12	4	7	10	17	25	12	11	32	18	7	16	10	50	30	63	57	51	31
16	6	7	12	22	30	16	14.5	36	20	8	20	10	65	40	74	65	58	38
20	6	8	14	26	40	20	18	42	23	11	22	12	80	50	74	80	72	44
25	6	9	16	32	45	25	22.5	50	28	15	26	15	90	55	78	93	85	52
30	6	9	18	38	50	30	27	55	30	15	30	15	100	60	83	101	93	60
35	10	16	20	45	60	35	32	62	35	15	34	18	120	75	116	120	110	70
40	10	16	25	55	70	40	36	70	40	15	44	18	135	85	116	130	120	80
45	10	16	30	60	80	45	40	80	45	15	50	20	150	95	116	140	130	90

p1	p2	MK	N	Travel	GW	MJ	SW	Catalog No.	D	L (Max. pin length)
39	35	M6	6	17		M10×1.0	19	KOCU-K	12	450
46	40	M6	6	23					16	
56	55	M8	8	28					20	
66	65	M10	10	31	M10×1.0		24		25	
74	70	M10	10	40					30	900
85	80	M12	10	45					35	
95	90	M12	10	50		M24×1.5	46		40	
105	110	M12	10	55					45	



Order Catalog No. — D — L
KOCU-K — 35 — 900

Pipe Diameter

D	D1 Outer Diameter	Inner Diameter
12	4	3
16	6	5
20	6	5
25	6	5
30	6	5
35	10	9
40	10	9
45	10	9